



---

# Accountability Reporting for the Community Colleges (ARCC) 2011

Town Meeting

October 5, 2011

Presented by Rajinder Samra, Director of  
Institutional Research and Planning



# Overview

---

- ARCC Background
- Methodology
- Las Positas College's Performance & Assessment



# ARCC Background

---

- Accountability Reporting for the Community Colleges (ARCC)
- Annual evaluation of community college performance (on student outcome measures)
- Compiled by CCC Chancellor's Office
- Report goes to the State Legislature



# ARCC College Reports

---

- Methodology
  - College-level student outcome measures
  - College peer groups
  - Self-Assessment



# College Student Outcome Measures

---

- Progress and Achievement: Degree/Certificate/Transfer
  - Progress and Achievement Rate
  - Percentage of students earning 30 or more units
  - Fall to Fall Persistence Rate for new students
- Progress and Achievement: Workforce Development
  - Annual success rate for vocational courses
- Pre-Collegiate Improvement
  - Annual success rate for Basic Skills courses
  - Basic Skills Improvement Rate
  - ESL Improvement Rate



# College Peer Groups

---

- For each of the seven outcome measures, college peer groups were developed statistically based on similar college or local characteristics.
- Allows benchmarking within peer groups
- Not diagnostic within college (shows what, not why)



# College Self-Assessment

---

- Each college composed a 1-page analysis of their performance



---

ARCC

College Performance  
**Las Positas College**



# Las Positas College

## Student Progress and Achievement: Degree/Certificate/Transfer

---

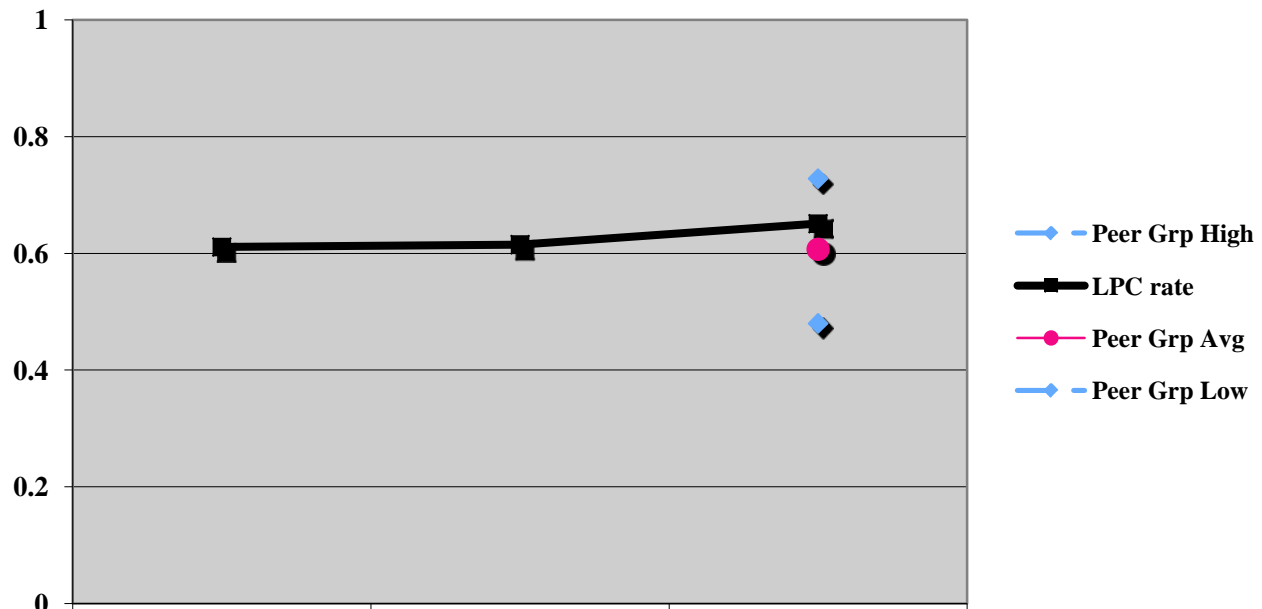
**Progress and Achievement Rate:** Percentage of first-time students who showed intent to complete and who achieved any of the following outcomes within six years:

Transferred to a 4-year college; earned an AA/AS; earned a Certificate (18 units or more); achieved "Transfer Directed" status; achieved "Transfer Prepared" status.

	<b>2002-03 to 2007-08</b>	<b>2003-04 to 2008-09</b>	<b>2004-05 to 2009-10</b>
Student Progress and Achievement Rate	61%	62%	65%

# Las Positas College Peer Groups

## Student Progress and Achievement Rate



	2002-2008	2003-2009	2004-2010
Peer Grp High			73%
LPC rate	61%	62%	65%
Peer Grp Avg			61%
Peer Grp Low			48%

Cohort years

# Las Positas College

## Student Progress and Achievement: Degree/Certificate/Transfer

---

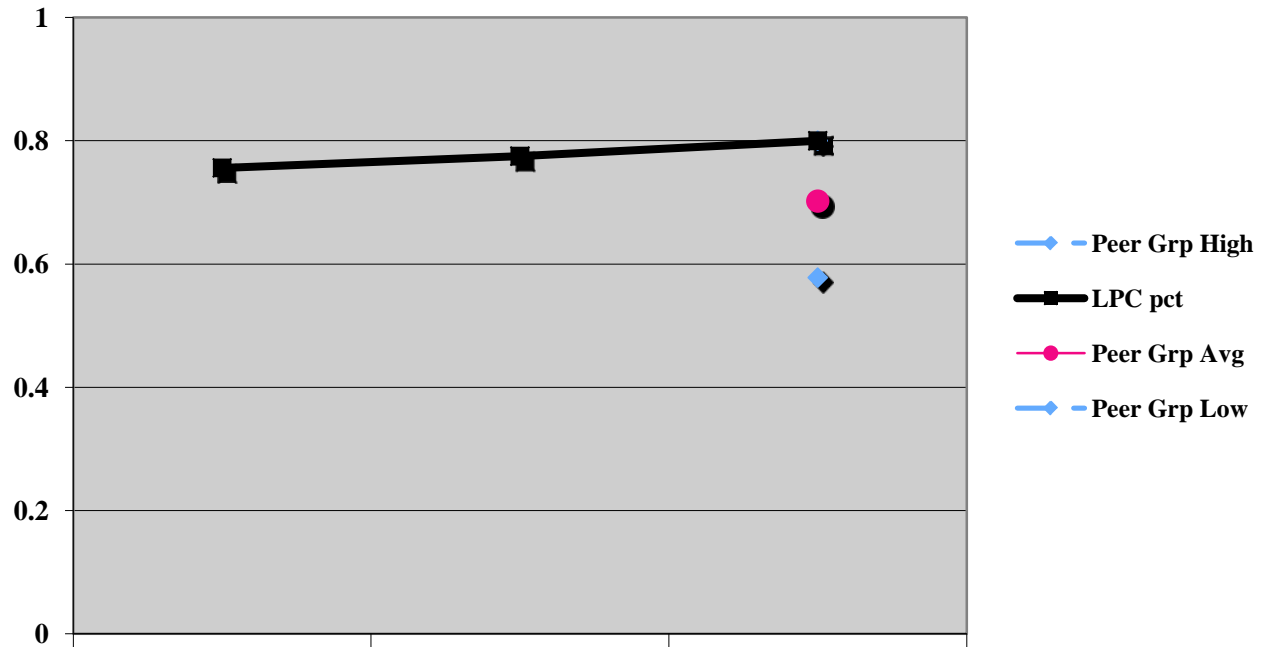
### **Percent of Students Who Earned at Least 30 Units:**

Percentage of first-time students who showed intent to complete and who earned at least 30 units while in the CCC System within six years:

	<b>2002-03 to 2007-08</b>	<b>2003-04 to 2008-09</b>	<b>2004-05 to 2009-10</b>
Percent of Students Who Earned at Least 30 Units	76%	78%	80%

# Las Positas College Peer Groups

## Percent of Students who Earned at Least 30 Units



	2002-2008	2003-2009	2004-2010
Peer Grp High			80%
LPC pct	76%	78%	80%
Peer Grp Avg			70%
Peer Grp Low			58%

Cohort years

# Las Positas College

## Student Progress and Achievement: Degree/Certificate/Transfer

---

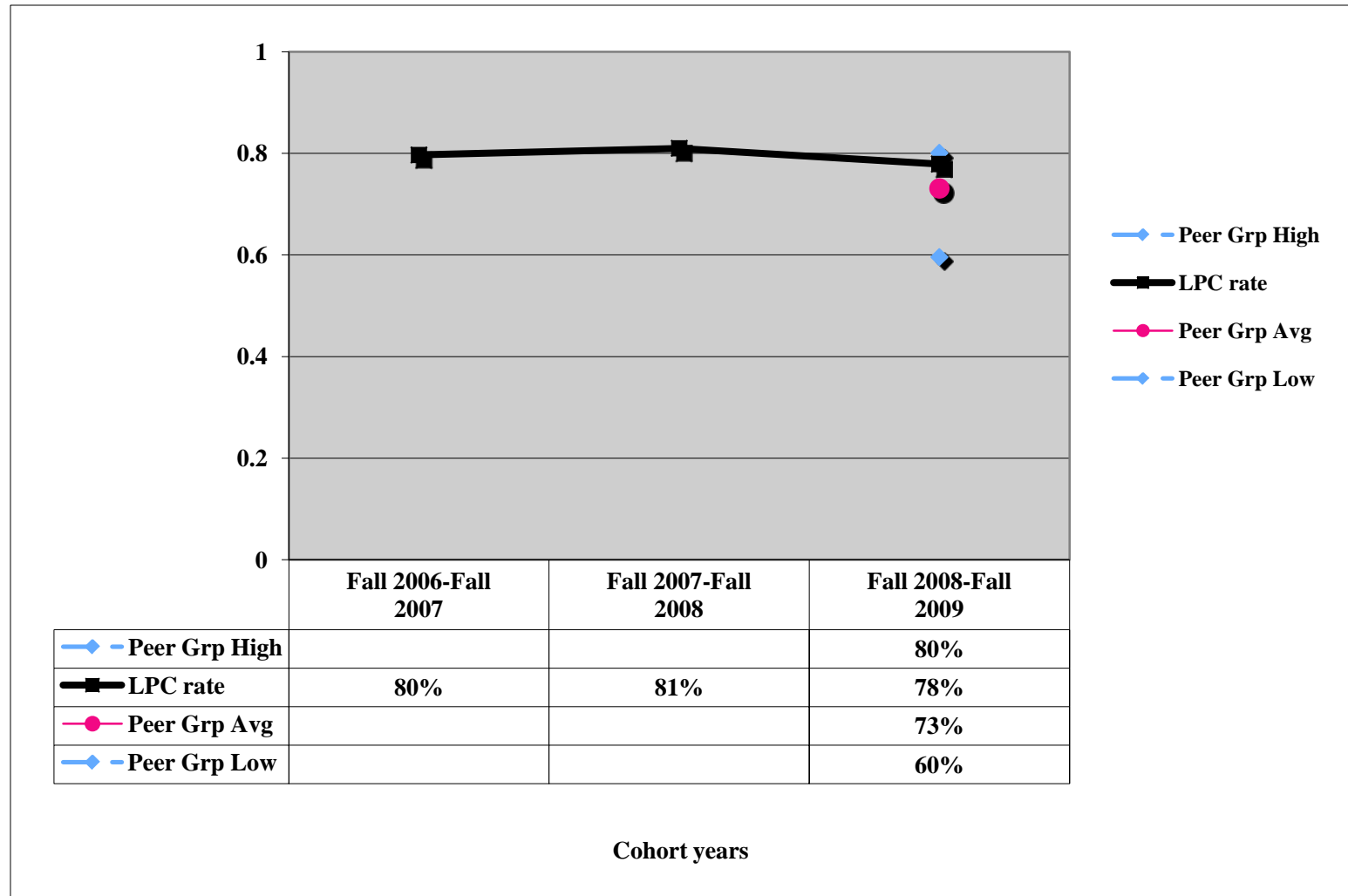
### **Fall-to-Fall Persistence Rate:**

Percentage of first-time students with a minimum of six units earned in a Fall term and who returned and enrolled in the subsequent Fall term anywhere in the system.

	<b>Fall 2006 to Fall 2007</b>	<b>Fall 2007 to Fall 2008</b>	<b>Fall 2008 to Fall 2009</b>
Fall-to-Fall Persistence Rate	80%	81%	78%

# Las Positas College Peer Groups

## Fall to Fall Persistence Rate



# Las Positas College

## Student Progress and Achievement: Vocational/Occupational/Workforce

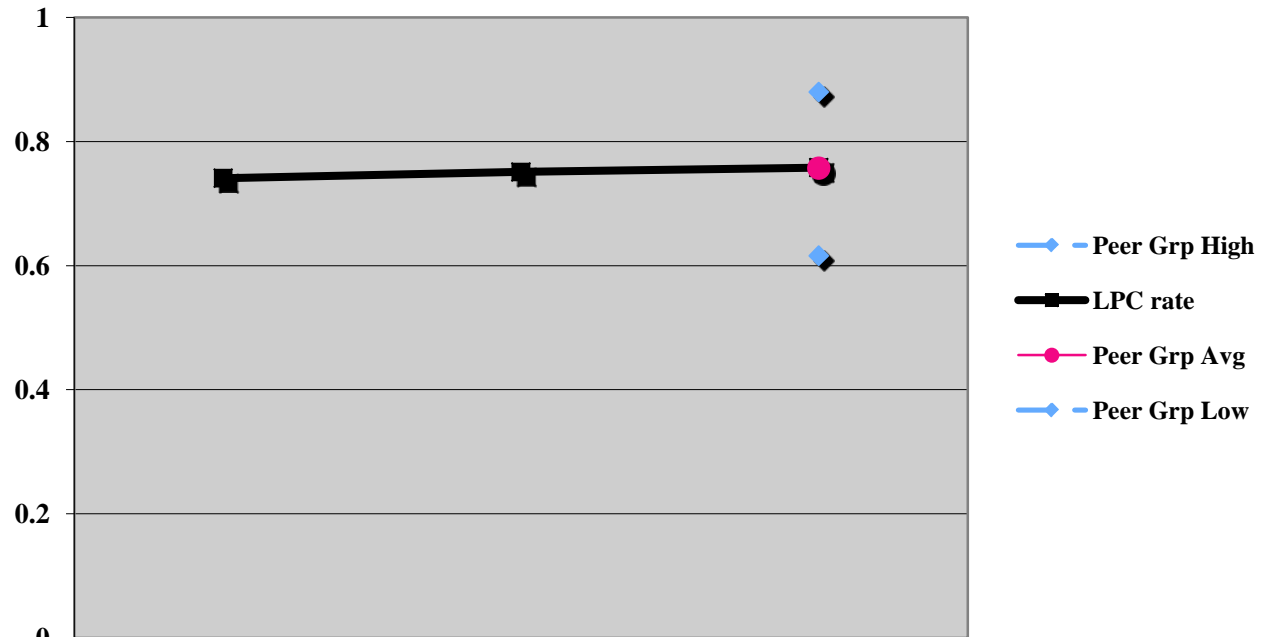
---

**Annual Successful Course Completion Rate for Vocational Courses:** Percentage of students completing for-credit vocational courses with a grade of "C" or better.

	<b>2007-08</b>	<b>2008-09</b>	<b>2009-10</b>
Annual Success Rate for Vocational Courses	74%	75%	76%

# Las Positas College Peer Groups

## Vocational Course Success Rate



	2007-2008	2008-2009	2009-2010
Peer Grp High			88%
LPC rate	74%	75%	76%
Peer Grp Avg			76%
Peer Grp Low			62%

Cohort years



# Las Positas College

## Pre-Collegiate Improvement:

### Course Success Rate for Basic Skills

---

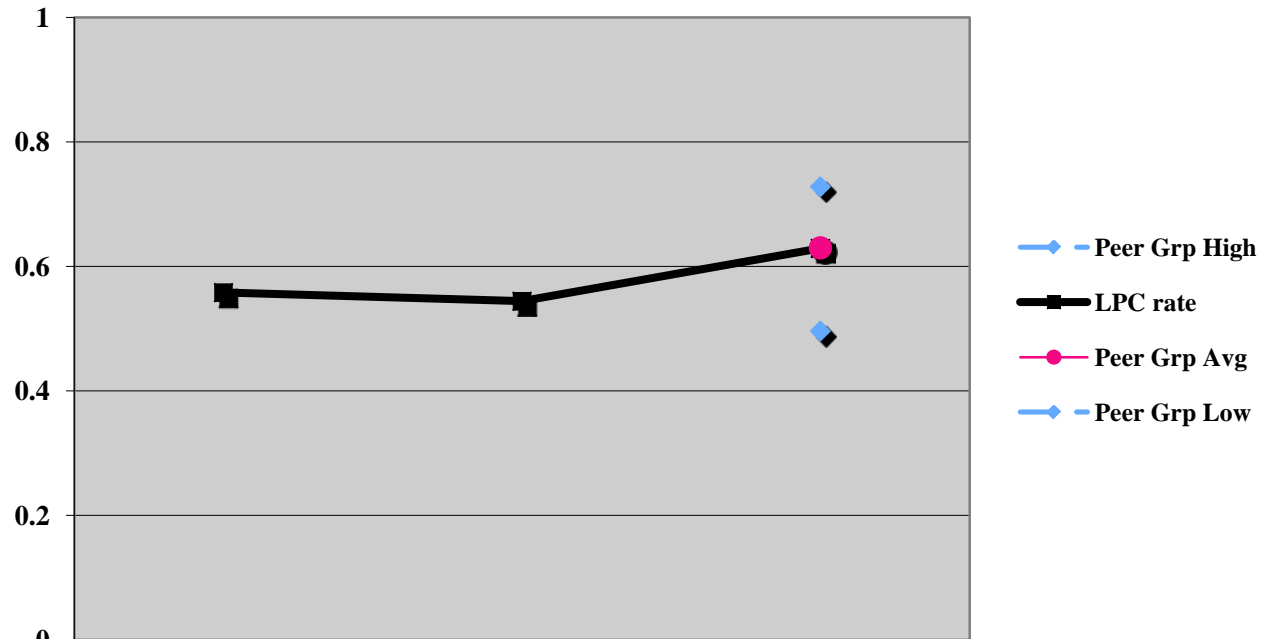
#### **Annual Successful Course Completion Rate for Basic Skill**

**Courses:** Percentage of students completing for-credit basic skills courses with a grade of "C" or better.

	<b>2007-08</b>	<b>2008-09</b>	<b>2009-10</b>
Annual Success Rate for Basic Skills Courses	56%	54%	63%

# Las Positas College Peer Groups

## Basic Skills Course Success Rate



Peer Grp High  
LPC rate  
Peer Grp Avg  
Peer Grp Low

	2007-2008	2008-2009	2009-2010
Peer Grp High			73%
LPC rate	56%	54%	63%
Peer Grp Avg			63%
Peer Grp Low			50%

Cohort years

# Las Positas College

## Pre-Collegiate Improvement:

### Improvement Rates for Basic Skills

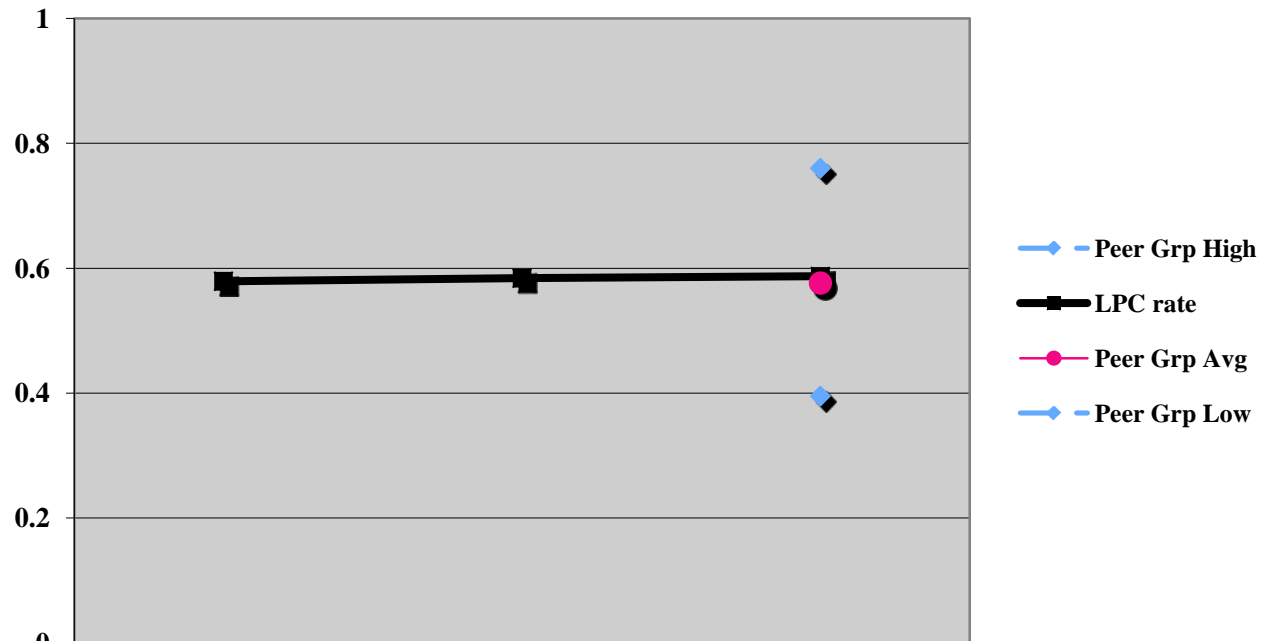
---

**Improvement Rates for Basic Skills Courses:** Percentage of students successfully completing a basic skills course 2 or more levels below college level, who successfully complete a higher-level course in the same discipline within 3 academic years.

	<b>2005-06 to 2007-08</b>	<b>2006-07 to 2008-09</b>	<b>2007-08 to 2009-10</b>
Annual Improvement Rate for Basic Skills Courses	58%	58%	59%

# Las Positas College Peer Groups

## Basic Skills Course Improvement Rate



	2005-2008	2006-2009	2007-2010
Peer Grp High			76%
LPC rate	58%	58%	59%
Peer Grp Avg			58%
Peer Grp Low			40%

Cohort years

# Las Positas College

## Pre-Collegiate Improvement: Improvement Rates for ESL

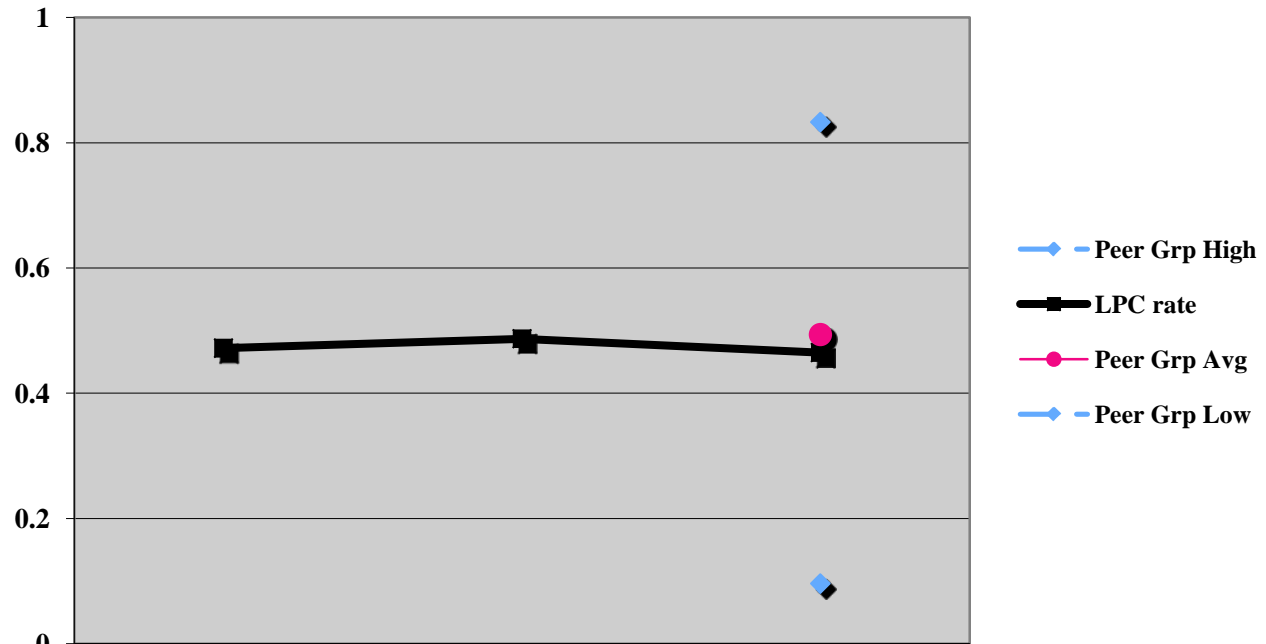
---

**Improvement Rates for ESL Courses:** Percentage of students successfully completing an ESL course who successfully complete a higher-level ESL or English course within 3 academic years.

	<b>2005-06 to 2007-08</b>	<b>2006-07 to 2008-09</b>	<b>2007-08 to 2009-10</b>
Annual Improvement Rate for ESL Courses	47%	49%	47%

# Las Positas College Peer Groups

## ESL Course Improvement Rate



	2005-2008	2006-2009	2007-2010
Peer Grp High			83%
LPC rate	47%	49%	47%
Peer Grp Avg			49%
Peer Grp Low			10%

Cohort years



ARCC

---

# Questions & Discussion