

Welcome to February Town Meeting



Welcome &
Announcements

Dr. Dyrell Foster, College President

New Colleagues on
Campus

Dr. Dyrell Foster, College President

What's Right at LPC

Dr. Dyrell Foster, College President

Budget and Expense
Update

Sean Brooks, Vice President of Administrative Services

DEIA: Web
Accessibility Updates

Dr. Nan Ho, Vice President of Academic Services, Kathleen King,
Instructional Technology Coordinator

Black History Month
Interactive

African American Studies and Ethnic Studies Department

Health and Wellness
Fair

Cultural Resource Center



Enrollment Update



Spring 2026 (as of 2/2/26):

- **Enrollment is up 4.24% compared to this time in Spring 2025**
- **Increase of 120.16 FTES compared to this time last spring**
- **Fill Rate: 92.25% (752 primary sections)**

Facilities Update



- Building 1800 – Stairs Project
- Building 600 - Journalism and Media Studies (JAMS)
- Building 2400 – Marketing Workshop & SWAG Store
- Amphitheater Renovations
- STEAM – Sciences & Arts Building Construction
- College Exterior Wayfinding Project
- Other exciting facilities projects:
 - Large lecture (1300)
 - Music Renovation (500)
 - Detailed update next month



Immigration Enforcement



SB-98: Immigration enforcement: notification

- Requires all campuses of the California Community Colleges, of the CSU, and of each independent institution of higher education to, notify all students, faculty, staff, and other campus community members when the presence of immigration enforcement is confirmed on campus or in the event that an undocumented student is subject to a federal immigration order.
- Requires the notice to include all of the following information:
 - The date and time the immigration enforcement was confirmed
 - The location of the confirmed immigration enforcement
 - A hyperlink to additional resources

Immigration Enforcement



SB-98: Immigration enforcement: notification

Notice may include:

- Emergency Notification Platform (Everbridge/RAVE)
 - Text
 - Voicemail
 - Email
- Campus Intercom System (Fire Alarms)
- Please update your emergency contact information
- Only applies when federal agents are on campus (and confirmed)

Immigration Enforcement



Key Provisions from AP 3415:

- All such individuals must be directed to the President's Office (9am-6pm)
 - (or Campus Safety)
- Employees are not expected to block, challenge, or prohibit federal agents
- Employees should not attempt to verify or assess the validity of any legal documents.
 - This determination is made by the President, or designee, with legal counsel.
- If officers enter restricted areas without consent, do not physically interfere. Instead, make a written record (or record) the interaction and notify the President's Office immediately.

Immigration Enforcement



Immigration Enforcement Activity Training:

- **Thursday, February 19th 10am -12noon**
- **Administrators and Admin. Assistants**
- **Wednesday, April 29th 2:30pm-4:30pm**
- **Entire campus community is invited**

New Colleagues

President Foster





Nicole Duffin

Sr. Administrative Assistant
President's Office





Carla Aguirre

Early Childhood Development
Coordinator





Sharay Hill

Program Coordinator
Mental Health and Wellness





Anela Schenone

Kinesiology Professor





Katharine Erhardt



Fire Service Technology
Coordinator/Professor



What's Right at LPC?



Congratulations!



Wanda Butterly



Dan Marschak



Administrative Services Update



Sean Brooks
Vice President of Administrative Services
February Town Meeting

California FY 2026-27 Budget



- State Budget Overview – Governor's January Budget
 - January 9, 2026 - Governor Newsom released his budget proposal for the 2026-27 fiscal year
 - CA State Budget is \$348.9billion, up by approximately 8.7% from FY 25-26, reflecting higher state receipts driven by stock market gains.
 - COLA for Community Colleges will be 2.41%, or \$240.6million
 - COLA of 2.41%, or \$30.6million, also applied to categorical programs such as Adult ED, EOPS, DSPS, Cal Works, Block Grant, Apprenticeships, CARE, and Childcare Tax Bailout (same as last year)
 - Systemwide enrollment growth of \$87.2million to cover growth of 1.5% over 2 years (\$55.3million or 1.0% in 25-26 and \$31.9million or 0.5% in 26-27)
 - One time funding includes \$120.7million for deferred maintenance, \$100million for Student Block Grant, \$36million for Common Cloud Data Platform, and \$35million for Credit for Prior Learning Initiative.

California FY 2026-27 Budget



- Concerns
 - One-time Funds – Block Grant, Strong Workforce Nursing (\$60million over 5 years), Dual Enrollment on K-12 side of \$100million, not enough for ongoing needs
 - Nursing Shortages – how to fund with reduction in strong workforce
 - Enrollment projections – K-12 enrollment is projected to decline by over 500,000 by 2031-32, while community college enrollment is projected to increase
- Comparison with 25-26 Projections:
 - Currently, \$2.9billion expected 26-27 budget deficit, down from previous estimate of \$13billion, LAO is projecting an \$18billion deficit

Macro Economic Conditions



- US Market
 - Inflation is up
 - Labor markets deteriorating
 - Gross Domestic Product is up
 - Result – Reduction in Gross Domestic Product (“GDP”)
 - GDP is the total monetary value of all the finished goods and services produced within a country in a specific time period
 - A way to measure the economic health of a country or region
 - Financial markets exuberant, but for how long?
 - Immense political pressure
- Result – Economic data is mixed and flawed

Macro Economic Conditions



- California
 - Artificial intelligence fueling the growth, CA growing faster than US
 - Weakness in housing
 - Construction down, building costs are still high
 - Labor force weak as deportation efforts continue
 - Reduces overall US workforce
 - Food prices will increase
- Other economic conditions
 - Interest rates may remain high as Fed continues to battle inflation concerns

LPC Budget Development Calendar



<u>Date</u>	<u>Action</u>
February 11, 2026	Finalize budget priorities and assumptions for tentative budget, draft revenue allocation model
February 17, 2026	Send position control worksheets to President, VPs, Deans and Grant Managers
March 13, 2026	Return position control worksheets to Admin Services Officer
March 17, 2026	Send Gen. Fund discretionary budget worksheets to President, VPs, and Deans

LPC Budget Update – 01/31/26



Fiscal Year	ACCT	ACCT Description	ADJUSTED BUDGET	YTD EXPENSE	ENCUMBRANCE	AVAILABLE BUDGET	YTD%
26	1000	Academic Administrator	1,718,976	972,126	-	746,850	57%
26	1000	FT Academic Salaries	15,906,498	8,392,490	-	7,514,008	53%
26	1000	PT Academic Salaries	5,966,364	7,327,308	-	(1,360,944)	123%
26	2000	Classified Administrator	976,246	604,406	-	371,839	62%
26	2000	Classified Salaries	7,003,165	3,741,801	-	3,261,365	53%
26	3000	Benefits	12,821,954	7,915,330	-	4,906,624	62%
26	4000	Supplies	131,133	55,414	24,156	51,563	61%
26	5000	Other Operating	970,810	494,616	121,350	354,845	63%
26	6000	Capital Outlay	11,730	3,988	-	7,742	34%
26	7000	Transfers	473,902	-	-	473,902	0%
2025-26		January Total	45,980,778	29,507,478	145,505	16,327,794	64%
Fiscal Year	ACCT	ACCT Description	ADJUSTED BUDGET	YTD EXPENSE	ENCUMBRANCE	AVAILABLE BUDGET	YTD%
25	1000	Academic Administrator	1,724,527	1,010,835	-	713,691	59%
25	1000	FT Academic Salaries	15,342,547	8,560,460	-	6,782,086	56%
25	1000	PT Academic Salaries	3,855,491	6,543,849	-	(2,688,357)	170%
25	2000	Classified Administrator	1,127,380	670,747	-	456,633	59%
25	2000	Classified Salaries	7,318,959	3,723,407	-	3,595,552	51%
25	3000	Benefits	13,119,800	7,886,335	-	5,233,465	60%
25	4000	Supplies	135,399	51,158	29,130	55,111	59%
25	5000	Other Operating	924,779	378,182	133,676	412,921	55%
25	6000	Capital Outlay	15,218	4,852	-	10,366	32%
25	7000	Transfers	597,803	12,631	-	585,172	2%
2024-25		January Total	44,161,903	28,842,456	162,806	15,156,641	66%

Time + Investments in Teaching = Increase in FTES



- Enrollment Growth
 - Driven by Time, Investments in Teaching, Fuels Increases in FTES
- Time, Teaching and FTES
 - ‘When the semester puts you through the fire
 - When the day to day puts you to the test
 - Nothing fuels enrollment
 - Like time, investments in teaching and growth in FTES
 - If you think the fiscal year is over
 - LPC just remember this
 - Nothing helps us to reach our targets
 - Like time, teaching and FTES’
 - Time, Love & Tenderness, Michael Bolton - 1991
 - Time, Teaching, & FTES 2026 Remix

DEIA: Web **Accessibility** Updates



Meet Your LPC Reps: Districtwide Accessibility Taskforce

- Kat King, Instructional Technology Coordinator/PT Faculty
- Wanda Butterly, Instructional Technology Specialist
- Tim Druley, Web Master
- Chris Crone, DSPS Director

What's new with accessibility?

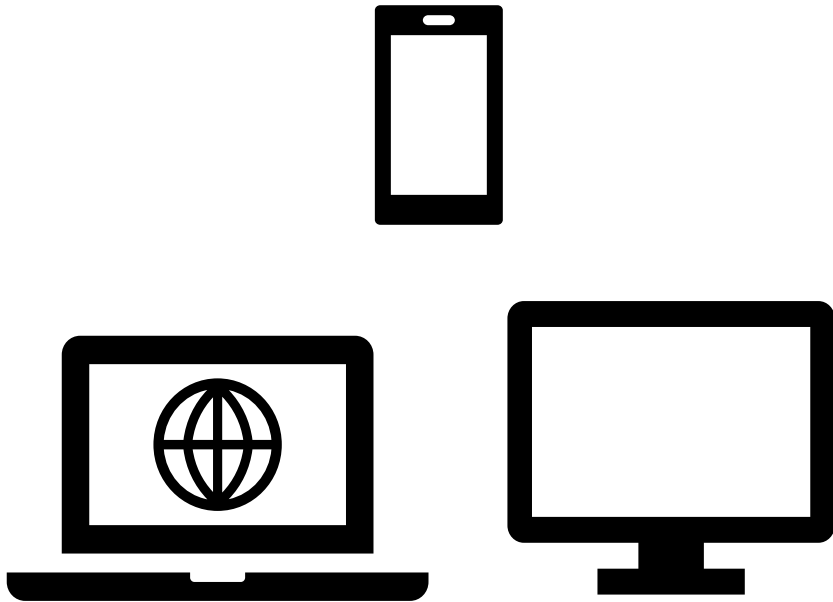


- Recent **federal and state mandates** amplify the importance of ensuring **everyone has access** to our services
- **We can all help** meet these mandates – and LPC's mission to "provide an inclusive, learning-centered, equity-focused environment"—by ensuring our content meets **web accessibility standards**

What is "web" content?

Anything online, including all content in our:

- Website
- Student/Employee Portal (MyPortal)
- Learning Management System (Canvas)
- Third-party tools



Learn more about key areas to consider for accessibility.

What are web accessibility standards?

Learn about Disability Services

- <https://www.laspositascollege.edu/dsps/>
- [Click here](#)
- APPLY FOR SERVICES TODAY!**



Hint...what might be wrong with this slide?

Understanding Web Accessibility Standards

P.O.U.R.

The Four Principles of Accessibility



P Perceivable

Content must be
*presented in ways
everyone can perceive*



O Operable

Interface must be
easy to navigate
and use



U Understandable

Information must
be clear and easy
to understand



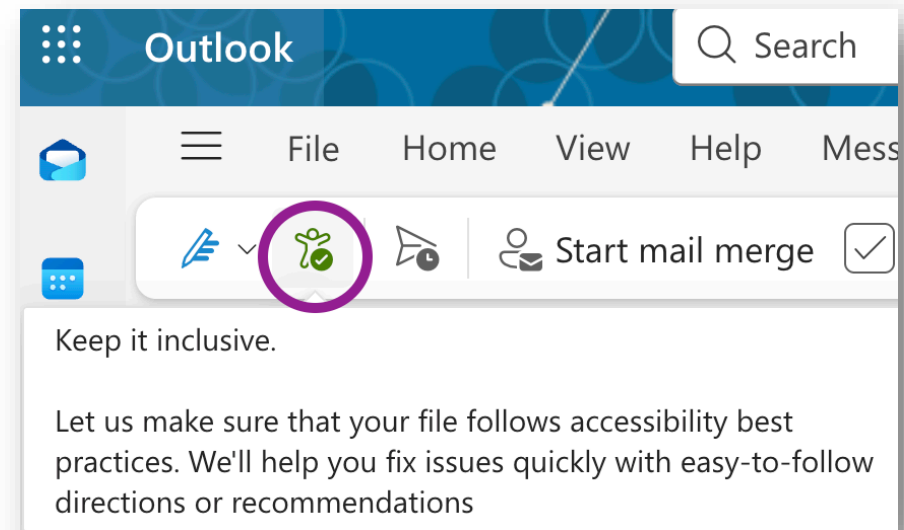
R Robust

Content must work
with various
technologies

How can I meet the standards?

Most tools now have **built-in checkers** to help quickly **identify and correct issues**:

- [Microsoft Tutorial](#) (for email, Word, Excel, and PowerPoint)
- [Adobe Tutorial](#) (for PDFs)
- [PopeTech Tutorial](#) (for Canvas)
- [Modern Campus Tutorial](#) (for website)



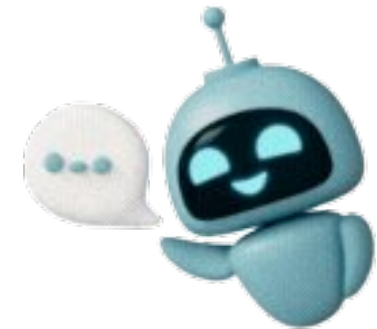
Learn more about web accessibility standards: [WCAG 2.1 Level AA](#)

New Tool: Meet "ComplyBot"

The amazing Wanda Butterly created an accessibility assistant for all of you!

It's been **trained on accessibility and UDL standards** and can help you make quick fixes to **documents** and **Canvas content**.

Try [ComplyBot](#)



Always check the results! Ask ComplyBot to make edits or make them yourself.

LAS POSITAS COLLEGE, FALL 2025
Biology 10: Intro to the Science of Biology
CRN # 12345-EO1 and 54321-EO2

Basic principles of biology, dealing with the nature of living things, and the nature of scientific investigation and its bioethical impact in our modern world. Designed for non-majors in biology and biomedical sciences.

Professor: Wanda Butterly

Office: N/A; E-Mail: wbutterly@laspositascollege.edu

Phone: 925-424-1000; Enter mailbox number (x1655), after greeting leave a message.

Office Hour (T/Th): 1804 (Bio Faculty Office), 1851 (Bio Learning Center) and/or 1872/1855 prior to lecture 4:00 pm to 4:50 pm.

Course Format (tentative):

Lectures (TTh): **Room 1872**

5:00-6:15 p.m. - Quiz/Lecture/Fact or Fiction Game/Film/Slide/Group Activity/Assignment/Discussion

Labs (T-crn **12345** & Th-crn **54321**) **Room 1855**

6:30-9:20 p.m. - Quiz/Lecture/Film/Lab work/Discussion

Materials Required:

Starr, Evers, Starr. (2015) Biology Concepts and Applications, or the current edition. Brooks/Cole.
Dickey, Jean (2003) Laboratory Investigations for Biology. 2nd edition. Thomson Brooks/Cole. (Dickey)
ebook: <https://www.cengage.com/c/biology-concepts-and-applications-9e-starr>
Unipack (12 glass sides & cover slips) / A selection of lab handouts may be provided.
Technical Requirements – Chrome is the preferred browser for Canvas.

Lecture & Lab Safety Policies:

Safety comes first! All Biology 10 students will embrace LPC's Safety Culture and sign the Las Positas College Biology Laboratory Safety Contract.

Las Positas College Alert System All individuals that are wanting to be notified in an emergency, please provide your contact information within ClassWeb.

Safety Policies If you have any questions or concerns regarding safety policies, you can find information at: <http://www.laspositascollege.edu/safety/policies.php>

Campus Safety & Lost and Found is located in Building 1725. (925) 424-1690

Course Communication: It is essential that you check Canvas regularly for posted announcements, handouts, syllabi, etc. Announcements may be emailed to your school email account; you are expected to access that information on a regular basis.

Special Accommodations: Las Positas is committed to the belief that its courses, classrooms, programs and activities must be accessible to all students. Any student who is unable to access instruction or participate fully in the activities of this class due to a physical, mental health or learning disability is encouraged to meet with me to discuss ways to meet your needs. If you have or suspect that you may have a disability that impacts your access to educational opportunities, please contact the Disability Resource Center (DRC) in room 1615 or call (925) 424-1510. Information about disability accommodations and campus services, which can be provided as text or links can be found at: <http://www.laspositascollege.edu/dsps/index.php>

<http://www.laspositascollege.edu/dsps/eligibility.php>

<http://www.laspositascollege.edu/dsps/eligibility.php>

Biology 10: Intro to the Science of Biology

Las Positas College, Fall 2025
CRN # 12345-EO1 and 54321-EO2

Basic principles of biology, dealing with the nature of living things, and the nature of scientific investigation and its bioethical impact in our modern world. Designed for non-majors in biology and biomedical sciences.

Instructor Information

Professor: Wanda Butterly

E-Mail: wbutterly@laspositascollege.edu

Phone: 925-424-1000; Enter mailbox number (x1655), after greeting leave a message.

Office Hour (T/Th): 1804 (Bio Faculty Office), 1851 (Bio Learning Center) and/or 1872/1855 prior to lecture 4:00 pm to 4:50 pm.

Course Format

Lectures (TTh): **Room 1872**

5:00-6:15 p.m. - Quiz/Lecture/Fact or Fiction Game/Film/Slide/Group Activity/Assignment/Discussion

Labs (T-crn **12345** & Th-crn **54321**) **Room 1855**

6:30-9:20 p.m. - Quiz/Lecture/Film/Lab work/Discussion

Materials Required

- Starr, Evers, Starr. (2015) Biology Concepts and Applications, or the current edition. Brooks/Cole.
- Dickey, Jean (2003) Laboratory Investigations for Biology. 2nd edition. Thomson Brooks/Cole. (Dickey)
- e-book: [Biology Concepts and Applications 9th Edition on Cengage](#)
- Unipack (12 glass sides & cover slips) / A selection of lab handouts may be provided.
- Technical Requirements – Chrome is the preferred browser for Canvas.

Improves accessibility; applies heading structure, creates descriptive links, etc.

Video Tutorial: Document-to-Document

LAS POSITAS COLLEGE, FALL 2025
Biology 10: Intro to the Science of Biology
CRN # 12345-EO1 and 54321-EO2

Basic principles of biology, dealing with the nature of living things, and the nature of scientific investigation and its bioethical impact in our modern world. Designed for non-majors in biology and biomedical sciences.

Professor: Wanda Butterly

Office: N/A; E-Mail: wbutterly@laspositascollege.edu

Phone: 925-424-1000; Enter mailbox number (x1655), after greeting leave a message.

Office Hour (T/Th): 1804 (Bio Faculty Office), 1851 (Bio Learning Center) and/or 1872/1855 prior to lecture 4:00 pm to 4:50 pm.

Course Format (tentative):

Lectures (TTh): **Room 1872**

5:00-6:15 p.m. - Quiz/Lecture/Fact or Fiction Game/Film/Slide/Group Activity/Assignment/Discussion

Labs (T-crn **12345** & Th-crn **54321**) **Room 1855**

6:30-9:20 p.m. - Quiz/Lecture/Film/Lab work/Discussion

Materials Required:

Starr, Evers, Starr. (2015) Biology Concepts and Applications, or the current edition.
Dickey, Jean (2003) Laboratory Investigations for Biology. 2nd edition. Thomson
ebook: <https://www.cengage.com/c/biology-concepts-and-applications-9e-starr/9>
Unipack (12 glass sides & cover slips) / A selection of lab handouts may be provided.
Technical Requirements – Chrome is the preferred browser for Canvas.

Lecture & Lab Safety Policies:

Safety comes first! All Biology 10 students will embrace LPC's Safety Culture and adhere to all items on the Las Positas College Biology Laboratory Safety Contract.

Las Positas College Alert System All individuals that are wanting to be notified in the event of an emergency, please provide your contact information within ClassWeb.

Safety Policies If you have any questions or concerns regarding safety policies, you can find information at: <http://www.laspositascollege.edu/safety/policies.php>

Campus Safety & Lost and Found is located in Building 1725. (925) 424-1690

Course Communication: It is essential that you check Canvas regularly for posted announcements, handouts, syllabi, etc. Announcements may be emailed to your school email account; you are expected to access that information on a regular basis.

Special Accommodations: Las Positas is committed to the belief that its courses, classrooms, programs and activities must be accessible to all students. Any student who is unable to access instruction or participate fully in the activities of this class due to a physical, mental health or learning disability is encouraged to meet with me to discuss ways to meet your needs. If you have or suspect that you may have a disability that impacts your access to educational opportunities, please contact the Disability Resource Center (DRC) in room 1615 or call (925) 424-1510. Information about disability accommodations and campus services, which can be provided as text or links can be found at: <http://www.laspositascollege.edu/dsps/index.php>

<http://www.laspositascollege.edu/dsps/eligibility.php>

<http://www.laspositascollege.edu/dsps/eligibility.php>

Fixes for accessibility + adds design features like buttons, callout boxes, and accordions



Biology 10: Introduction to the Science of Biology

Las Positas College • Fall 2025

CRN #20835-EO1 (Tuesday Lab) • CRN #22339-EO2 (Thursday Lab)



Welcome



Instructor



Schedule



Resources



Assessment

Welcome to Biology 10!



Course Overview

This course explores the basic principles of biology, the nature of living things, and the impact of scientific investigation in our modern world. Designed specifically for non-majors, we'll make biology accessible and relevant to your everyday life!



What You'll Learn (Course Objectives)



Student Learning Outcomes

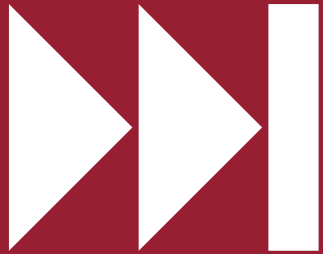
Video Tutorials: Doc-to-Canvas or Canvas-to-Canvas

ComplyBot Testimonials

"I can't even put it in words HOW GOOD the transformation from before and after is in my Canvas course! You must try it." -Drew Patterson, BUS

"ComplyBot has been a game-changer for my Canvas courses. I simply copy and paste HTML code, and it instantly transforms plain pages into stunning, eye-catching content using colorful fonts, borders, and call out boxes. It's incredibly easy to use, and I really appreciate learning about this tool." -Karen Oeh, ANTH

"I just love how focused and organized your classes are, from what I've learned in just the first week it's like the most organized classes I have ever had. I can tell that you really care about your students and want us to succeed." -LPC Student to Meghan Swanson, ENG



Next Steps

Design with accessibility in mind! Try ComplyBot (or other tools linked in these slides).

Learn More:

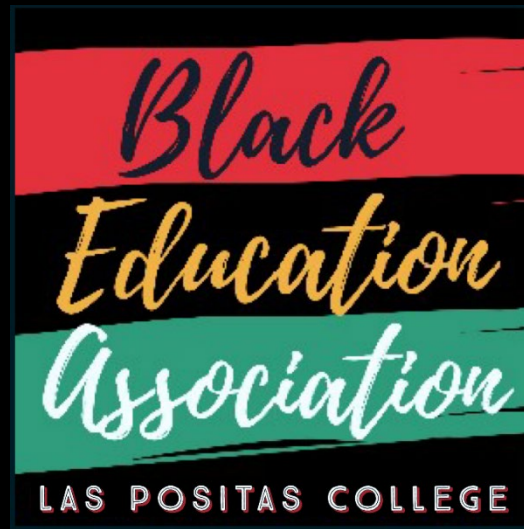
- Sign up for ongoing [workshops](#) or [book an appointment](#) for help
- Join us on Flex Day for hands-on workshops
- Explore free [Training + Tools](#) through CCC Accessibility Center

Thank you for all you do to support all of our students!

Black History Month Interactive

African American Studies and Ethnic Studies Department





A Century of Black History Commemorations

Celebrating 100 Years!

**Support
Hawks
Basketball
Feb. 11 at 5pm!**



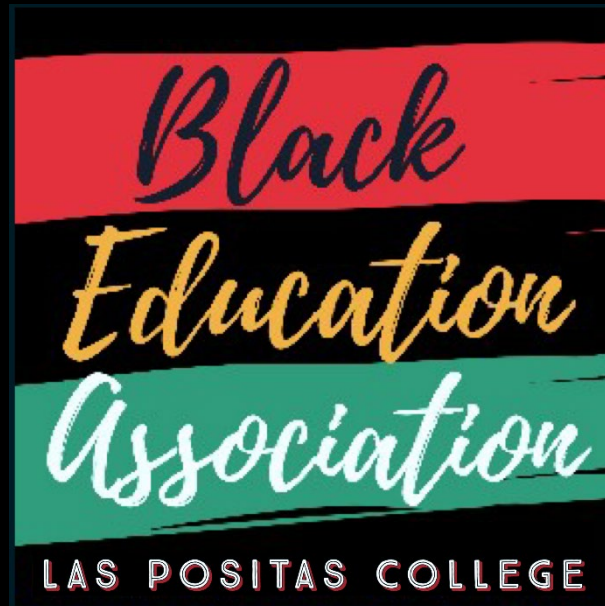
**A2MEND
Taste of Soul
Feb. 18 at 11am!**



**BSU Open Mic
Wednesday , February 25 at 3pm
Cultural Community Center**

For a detailed list of events, visit the
BEA events page:

www.laspositascollege.edu/bcrc/events.php



Hosted by Student Services for all LPC Employees

HEALTH + WELLNESS FAIR

Enjoy Over 25 Stations & Activities

- ✓ Rock Painting
- ✓ Candle Making
- ✓ Crochet Lessons
- ✓ Wall of Gratitude
- ✓ Fun w/Fidget Toys
- ✓ Sample Essential Oils
- ✓ Learn a New Dance
- ✓ Friendship Bracelets
- ✓ Bath Balms & Oils
- ✓ Flower Arranging

Great Door Prizes!

- 📅 TODAY!
- 🕒 3:00 PM - 4:30 PM
- 📍 Cultural Community Center, Rm 2401

