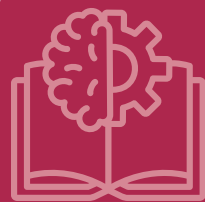




# What is Dual Enrollment?



**Dual Enrollment** is a program that provides an opportunity for 9th–12th grade high school students to benefit from advanced or vocational classes by being able to enroll in **both** high school and college at the same time.

As a high school student, you can take courses at **Las Positas College** while you are in high school with the permission of your parents and your high school – tuition FREE!

*Note: Students in 8th grade may be admitted through special agreements between Las Positas College and school districts.*

*You may enroll in a maximum of 11 units for Spring, Summer, and Fall sessions.*

## The Dual Enrollment Program allows you to:

- Take classes that aren't available at your high school.
- Take Career Technical Education (CTE) classes to explore and develop skills that will help you enter the workforce.
- Take courses that will fulfill college general education requirements.
- Save money while getting a head start on your college education.

The most important thing to remember is that as a dual enrollment student, you are also a **Las Positas College** student!

*Welcome aboard, HAWK!*



LAS POSITAS  
COLLEGE



# What is Dual Enrollment?

Both of these are!



## CCAP Dual Enrollment

High School districts offer curated college courses to their students during and after the high school day through Dual Enrollment.

## Concurrent Enrollment (Non-CCAP Dual Enrollment)

High school students can take courses (as an individual) at Las Positas College or online through Concurrent Enrollment.



### Dual Enrollment at LPC:

- Students in the class are generally high school students.
- Courses are taught by college instructors.
- Students sign a CCAP Dual Enrollment form ONCE for the entire duration of high school.
- Courses are primarily taught on the high school campus.
- The courses are curated through the high school district.
- All tuition and fees are waived and required materials are provided (except parking if class is at LPC).

### Concurrent Enrollment at LPC:

- Most students in the class will be college students.
- All courses are taught by college instructors.
- Students are approved to register by a high school counselor or administrator.
- Students must be cleared by Admissions & Records to register themselves in their courses (through the Concurrent Enrollment form).
- Tuition cost is waived, but minimal fees may if student chooses to use services – i.e. parking and health.
- Textbooks and materials are not provided and must be purchased by the student, if required.
- Students in the Concurrent Enrollment program must apply for Admission and complete the Adobe Sign form each term.



**LAS POSITAS**  
COLLEGE

For further assistance, contact Educational Partnerships  
**Email: [lpc-dualenrollment@laspositascollege.edu](mailto:lpc-dualenrollment@laspositascollege.edu)**