

$$x = \frac{-b \pm \sqrt{b^2 - 4ac}}{2a}$$



LAS POSITAS
COLLEGE

Summer Geometry INFORMATIONAL MEETING

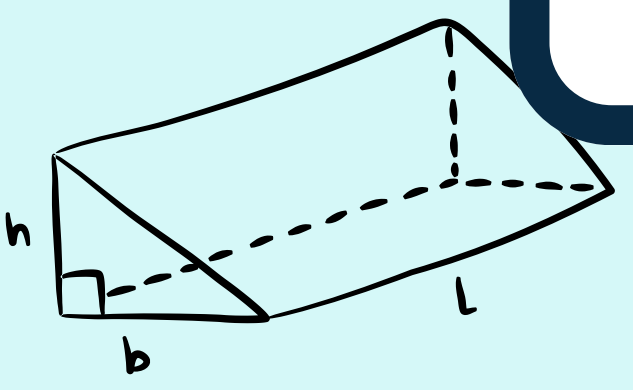
Wednesday, March 12, 2025
7:00-8:00 pm

$$y = mx + b$$



$$V = \frac{4}{3} \pi r^3$$

$$a = \frac{V_f - V_i}{t}$$



$$V = \frac{1}{2} b h l$$

$$\frac{x}{a} + \frac{y}{b} = 1$$

$$ax^2 + bx + c = 0$$

SUMMER GEOMETRY

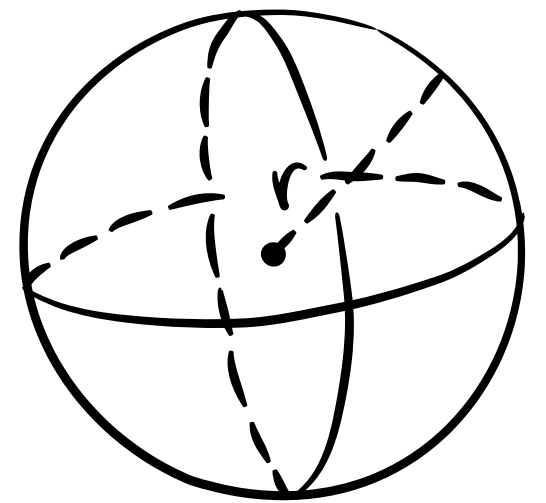
$a =$ This class was designed for math acceleration
or for credit recovery.

THE CLASS

- *This is a pre-transfer, noncredit course.*
- Each school district decides IF the class will “count” or not, and WHAT it would count for if it does count.
- LPC has an MOU with Dublin USD where the students that successfully complete the class will get HS and college credit.

$$\frac{-b \pm \sqrt{b^2 - 4ac}}{2a}$$

$$y = mx + b$$



$$V = \frac{4}{3} \pi r^3$$

BASIC INFORMATION

Six week session

June 16 - July 24

Tentative until posted

AM or PM options

**Mon-Thurs,
Lab/Lecture**

THE PROCESS

Apply to LPC

- CCCApply

Wait for your W#

- If you do not receive this within 48 hours, please email Traci Peterson at LPC.

Fill out the Concurrent Enrollment Form

- Fill out either the dualenroll.com account and/or the Concurrent Enrollment Form

Register for Class

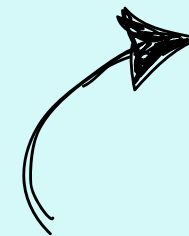
- More details to be provided soon

CONCURRENT ENROLLMENT

We are in the process of piloting a new registration platform called **dualenroll.com**. One middle school will pilot this program. If successful, we will open it up to all students. Students will either be given the link for the new platform or will be asked to fill out the Concurrent Enrollment Form.

MORE ABOUT THE CLASS

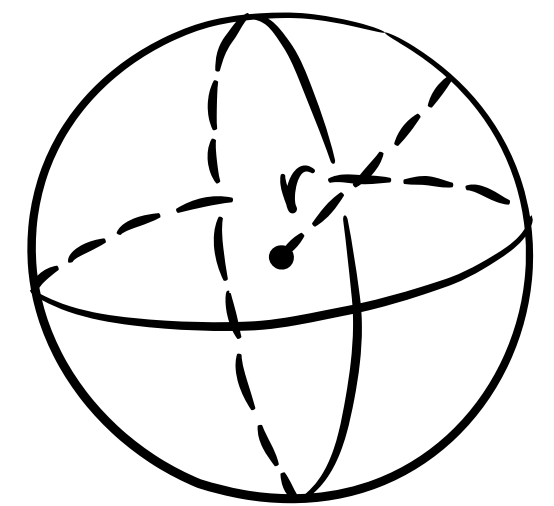
- Under **Noncredit Math LPC**
- **NMAT 256 and NMAT 202c**
- *Students may need a compass, a protractor, and a scientific calendar for some sections*



Anthropology LPC
Art - LPC
Biological Sciences LPC
Computer Information Systems
Computer Science LPC
Emergency Medical Services
French LPC
Geography
Health- LPC
Journalism and Media Studies
Marketing
Noncredit Math- LPC
Philosophy
Religious Studies
Theater Arts LPC

$$\frac{-b \pm \sqrt{b^2 - 4ac}}{2a}$$

$$y = mx + b$$



$$V = \frac{4}{3} \pi r^3$$

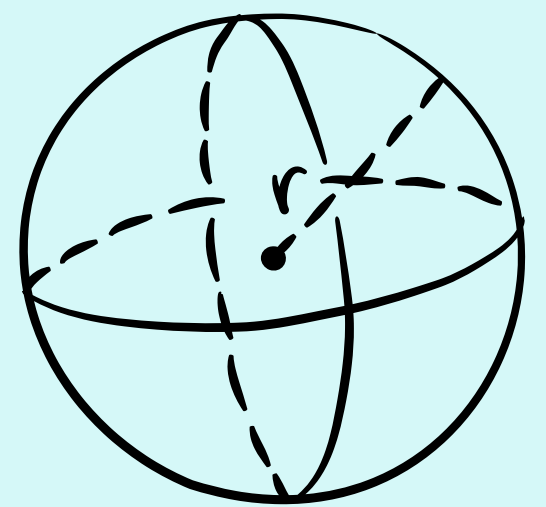
JUST IN TIME TUTORING FOR MATH

NMAT 202C

We HIGHLY recommend signing up for the Support Class, even if you aren't sure you will need it. Attendance is not required, but if assistance is needed, you will not be able to add later because of the shortened semester.

$$\frac{-b \pm \sqrt{b^2 - 4ac}}{2a}$$

$$y = mx + b$$



$$V = \frac{4}{3} \pi r^3$$

HELPFUL HINTS

1

EMAIL ADDRESS FOR CCCAPPLY

Use a personal email address, as some of the servers we use may be blocked from your district.

2

WRITE DOWN YOUR CCCID AND APP ID

WRITE DOWN your CCCID and your Application Confirmation Number in a safe space.

3

FILLING OUT CCCAPPLY

Carefully read each question. An incorrect answer can cause your application to be flagged as "fraud."

4

YOUR W#

If you do not receive your W number within 24-48 hours, please contact us with your CCID and App ID number.

5

COMPLETE THE ORIENTATION AND SELF-GUIDED PLACEMENT

Not completing these sections will delay the processing of your application.

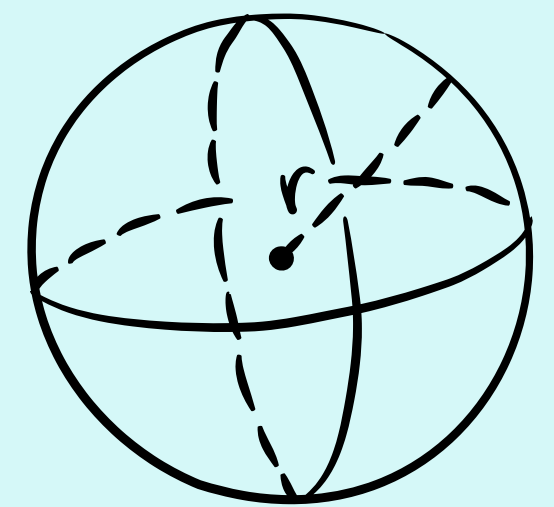
6

QUESTIONS?

The best way to reach about program questions is to email us at ipc-dualenrollment@laspositascollege.edu

$$\frac{-b \pm \sqrt{b^2 - 4ac}}{2a}$$

$$y = mx + b$$



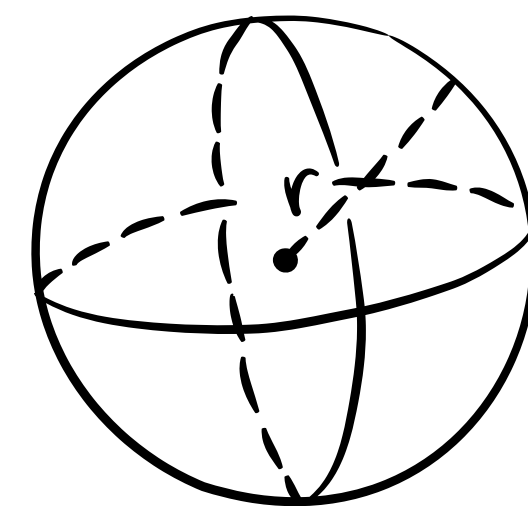
$$V = \frac{4}{3} \pi r^3$$

REGISTRATION DIFFICULTY?

- In order to register for the class, each student will need to complete the LPC Orientation and Guided Self Placement in My Portal
- Did you receive a "B" or better in the Fall semester for Algebra 1? If not, you will need special approval from your district.
- Reach out to us or check-in with your Counselor

$$\frac{-b \pm \sqrt{b^2 - 4ac}}{2a}$$

$$y = mx + b$$



$$V = \frac{4}{3} \pi r^3$$

FAQ'S

1. Is this course approved by the UC/CSU?
2. When is the class offered?
3. Will there be any online sections?
4. What if I cannot attend the full six week session?

CONTACTS:

Bill Branca
Dublin Unified School District
Asst. Director, Adult and Career Education
brancabill@dublinusd.org

Traci Peterson
Las Positas College
Educational Partnerships Project Manager
tpeterson@laspositascollege.edu

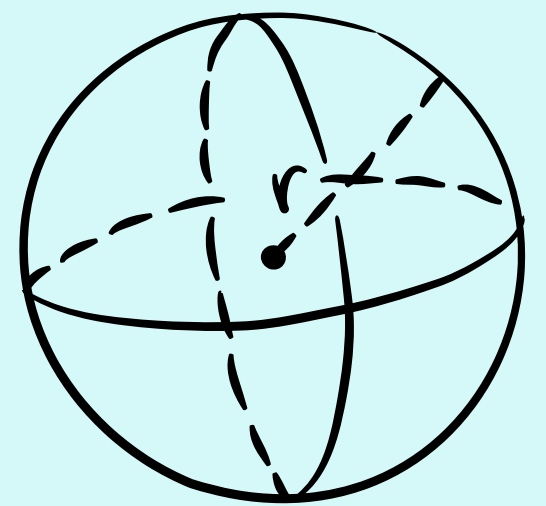
Humberto Lopez
Las Positas College
Admissions & Records
lpc-concurrent@laspositascollege.edu

Jennie Graham
Las Positas College
Math Department Coordinator
jgraham@laspositascollege.edu

David Powers
Las Positas College
Math Faculty
dpowers@laspositascollege.edu

$$\frac{-b \pm \sqrt{b^2 - 4ac}}{2a}$$

$$y = mx + b$$



$$V = \frac{4}{3} \pi r^3$$