

The Future of Las Positas College

Leadership Pleasanton

December 2015

Barry A. Russell, Ph.D.

President

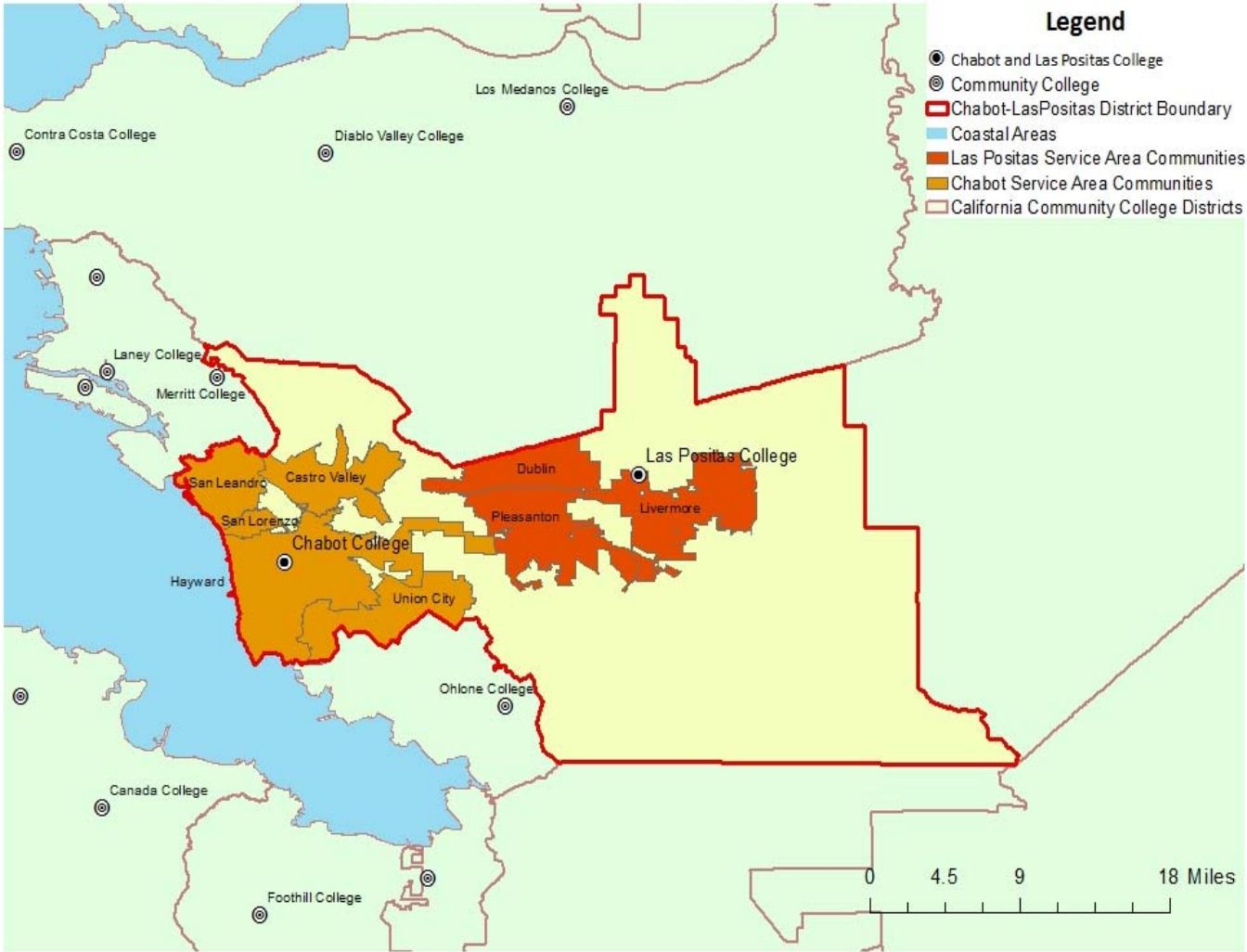


Las Positas College - Our Community's College

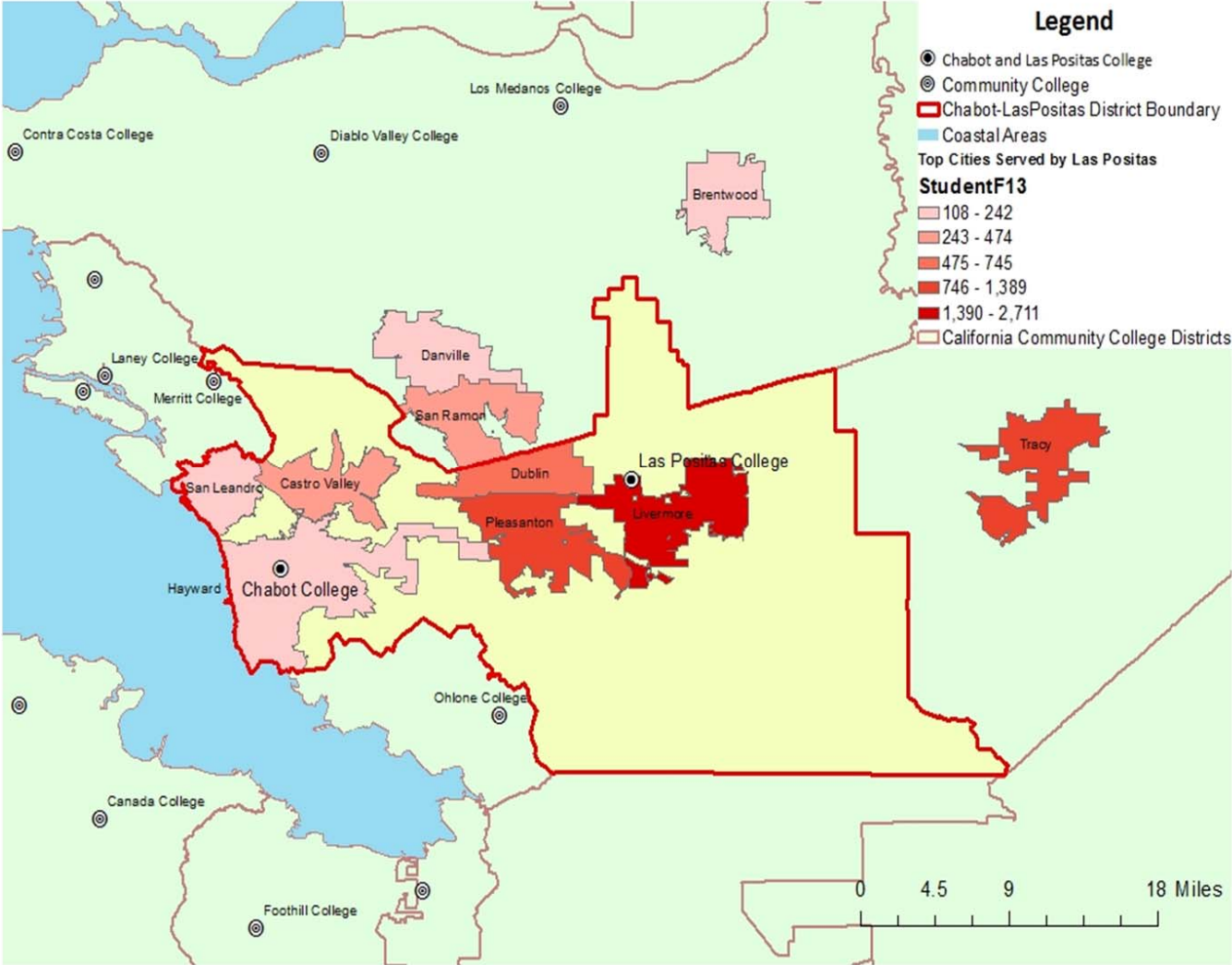
Las Positas College is an inclusive learning-centered institution providing educational opportunities and support for completion of students' transfer, degree, basic skills, career-technical, and retraining goals.



CLPCC District Service Area



Las Positas: Top Cities Served



Measure B Projects Nearing Completion



Measure B Projects Support Sustainability


24% more Efficient
Our buildings are 24% more efficient than traditional buildings


30% Less

Innovative technology helps reduce water consumption by 30%




Bioretention Basins

Bioretention basins help mitigate storm water run-off and keep pollutants out of the watershed




Non-Toxic

Campus uses non-toxic, green cleaning methods



Library Renovation



Amphitheater



LAS POSITAS COLLEGE THEATER ARTS DEPARTMENT PRESENTS

A FUNNY THING HAPPENED ON THE WAY TO THE FORUM

BOOK BY BURT SHEVOLVE AND LARRY GELBART
MUSIC AND LYRICS BY STEPHEN SONDHEIM

ORIGINALLY PRODUCED ON BROADWAY BY HAROLD S. PRINCE



JULY 23RD THROUGH JULY 26TH 8:00 PM

DIRECTED BY WESLEY MORGAN
MUSICAL DIRECTION BY MARK DIETRICH
CHOREOGRAPHY BY FAITH BLEVINS

TICKETS
STUDENTS & SENIORS \$10.00
GENERAL ADMISSION \$15.00

TICKETS CAN BE PURCHASED AT:
HOWIE LARSEN/STANISLAW KIRIL
PERFORMINGARTS/

PRODUCED BY SPECIAL ARRANGEMENTS WITH
MUSIC THEATRE INTERNATIONAL (MTI)

AT THE BARBARA J. MERITT CENTER FOR THE ARTS AMPHITHEATER.
Photo: © 2014 by Howie Larsen and Stanislav Kiril



New Classroom Building



Opening Fall 2018

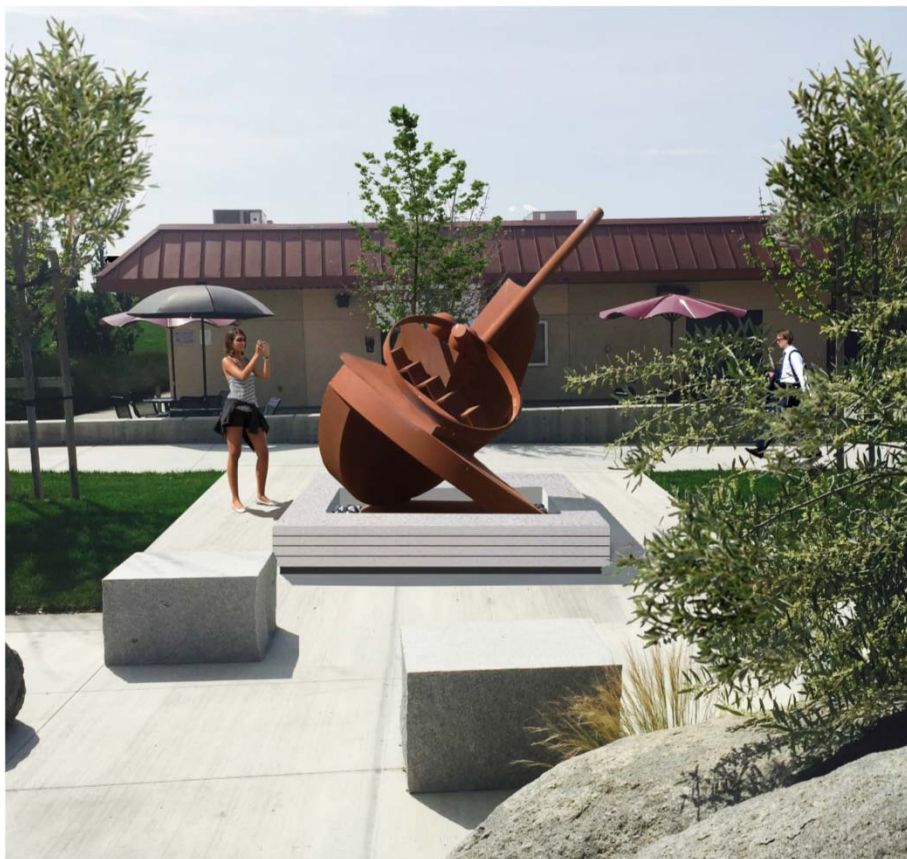
New Classroom Building



Portable Buildings



Fletcher Benton Sculpture



Veterans Center



Building 700



Verizon Tower



Existing



Proposed



Local Demographics

Population Growth 2014-2024

Cities in Service Area vs. County

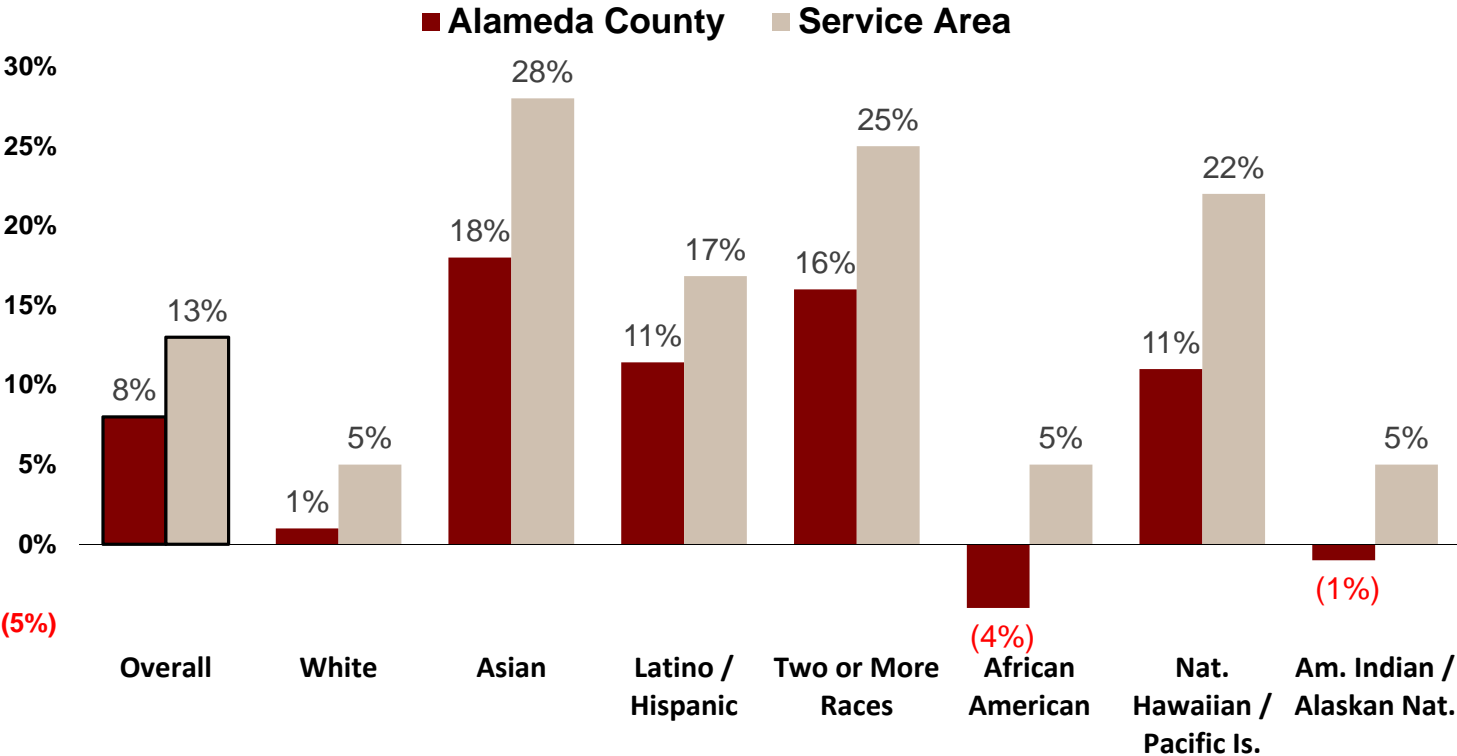
Region	2014	2024	Total Growth	Percent Change 2014-2024
Dublin	53,765	66,198	12,433	23%
Livermore	88,044	93,510	5,466	6%
Pleasanton	77,374	86,976	9,602	12%
Service Area Total	219,182	246,684	27,502	13%
Alameda County	1,610,934	1,745,340	134,406	8%

Source: Economic Modeling Specialist International Q3 2015 Data Set



Population Growth 2014-2024

Projected Percent Change by Race-Ethnicity



Source: Economic Modeling Specialist International Q3 2015 Data Set

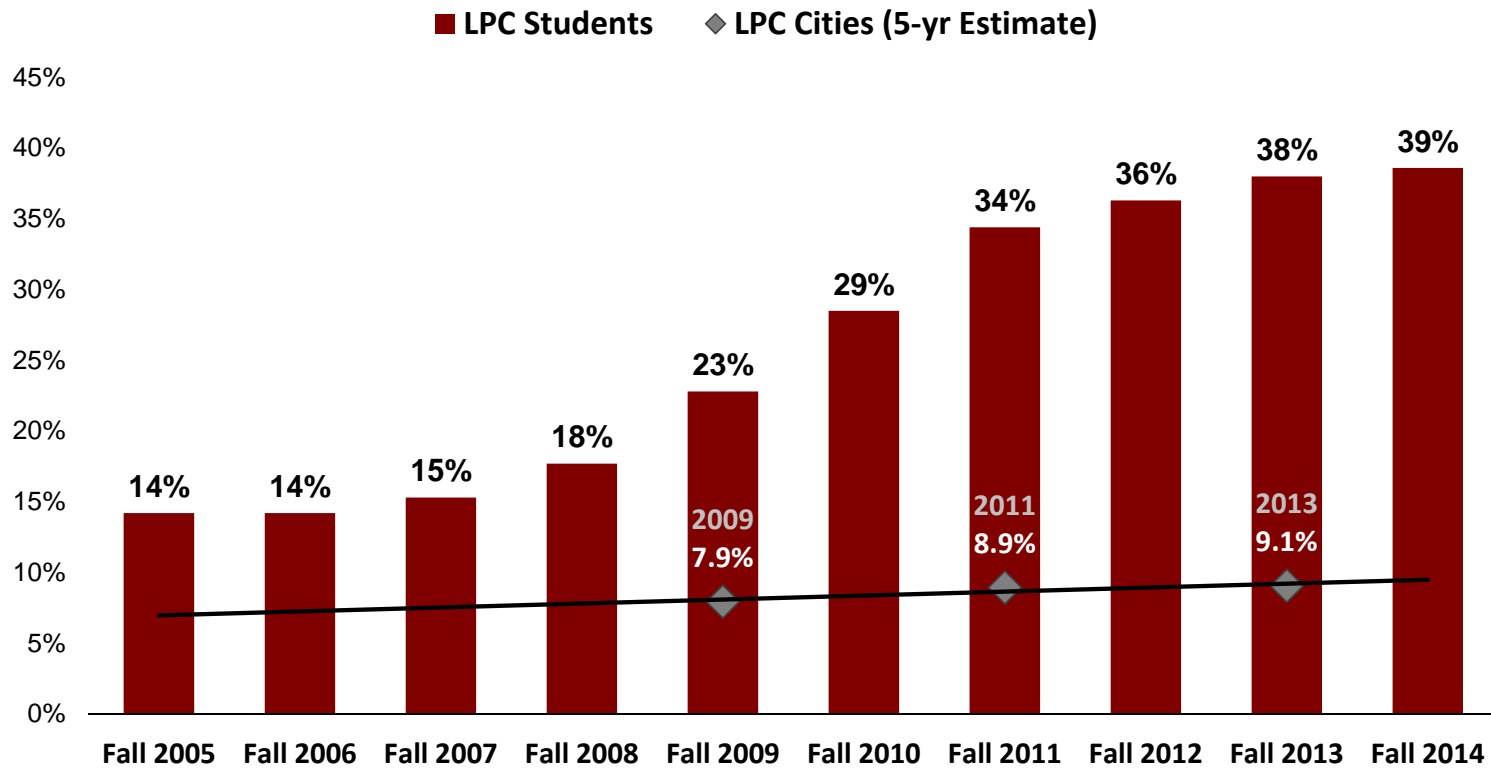


Las Positas College Demographics



Population in Poverty

LPC Students vs. Service Area Population



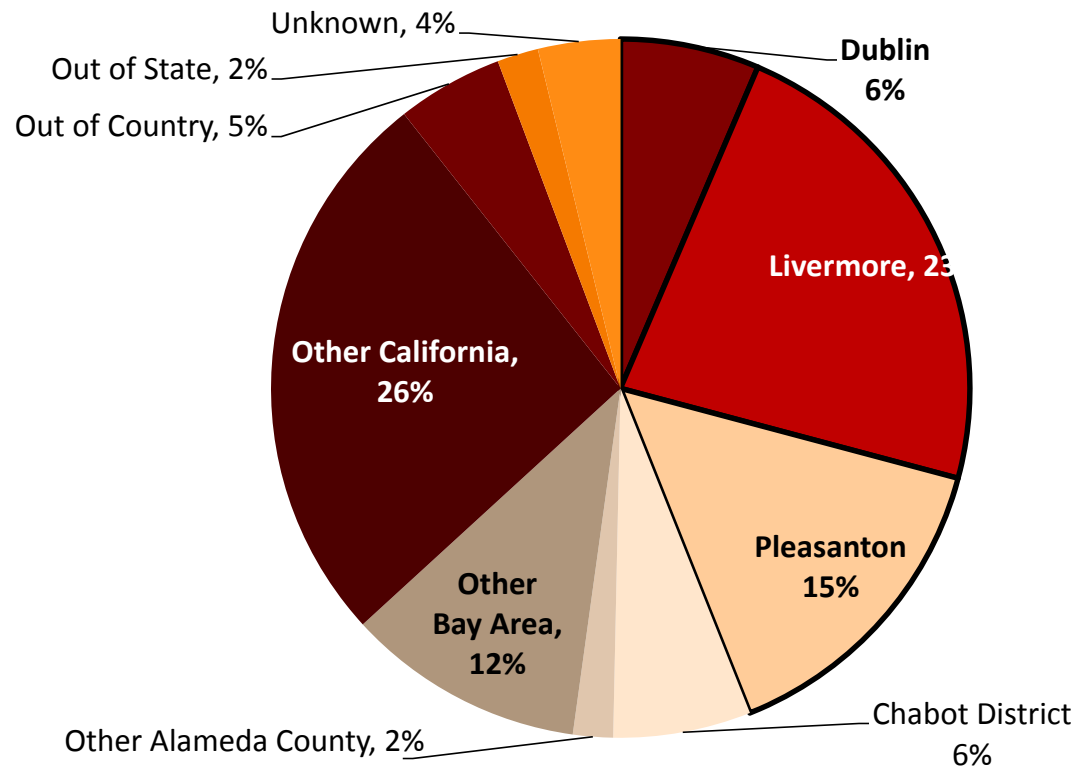
Note: Students in poverty are those receiving income-based financial assistance. Poverty in the general population is 150% below the federal poverty level.

Source: Chabot-Las Positas Institutional Research Dataset;
U.S. Census Bureau, American Community Survey 5-year Estimates (Table S1701)



School Districts of Incoming H.S. Students

Fall 2015

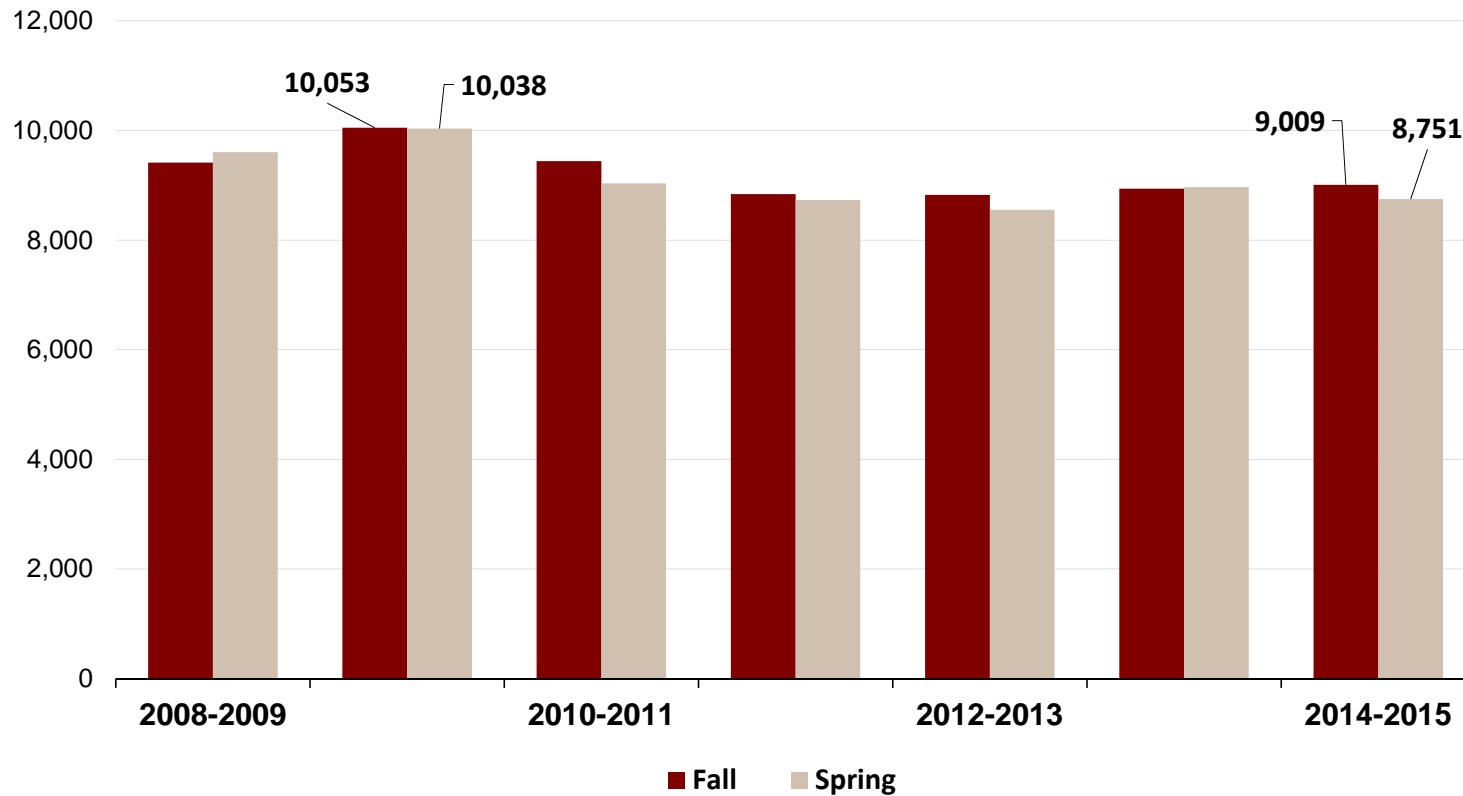


- **44% of Las Positas students are from LPC's service area**

Source: Chabot-Las Positas Institutional Research Dataset, Fall 2015 Census, Preliminary Count

LPC by the Numbers

Headcount: Fall vs. Spring: 2007-08 to 2013-14

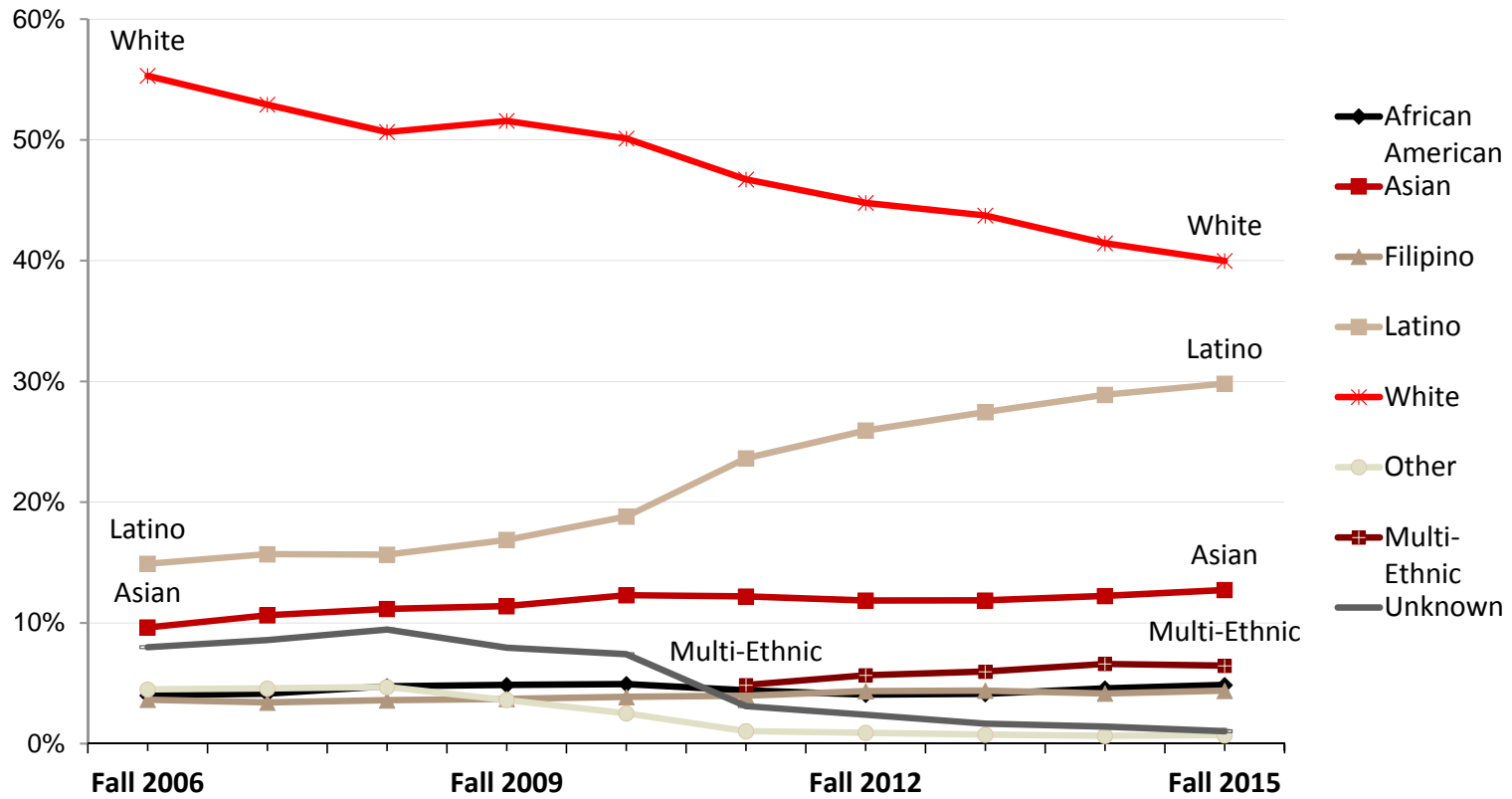


Source: LPC Office of Institutional Research & Planning



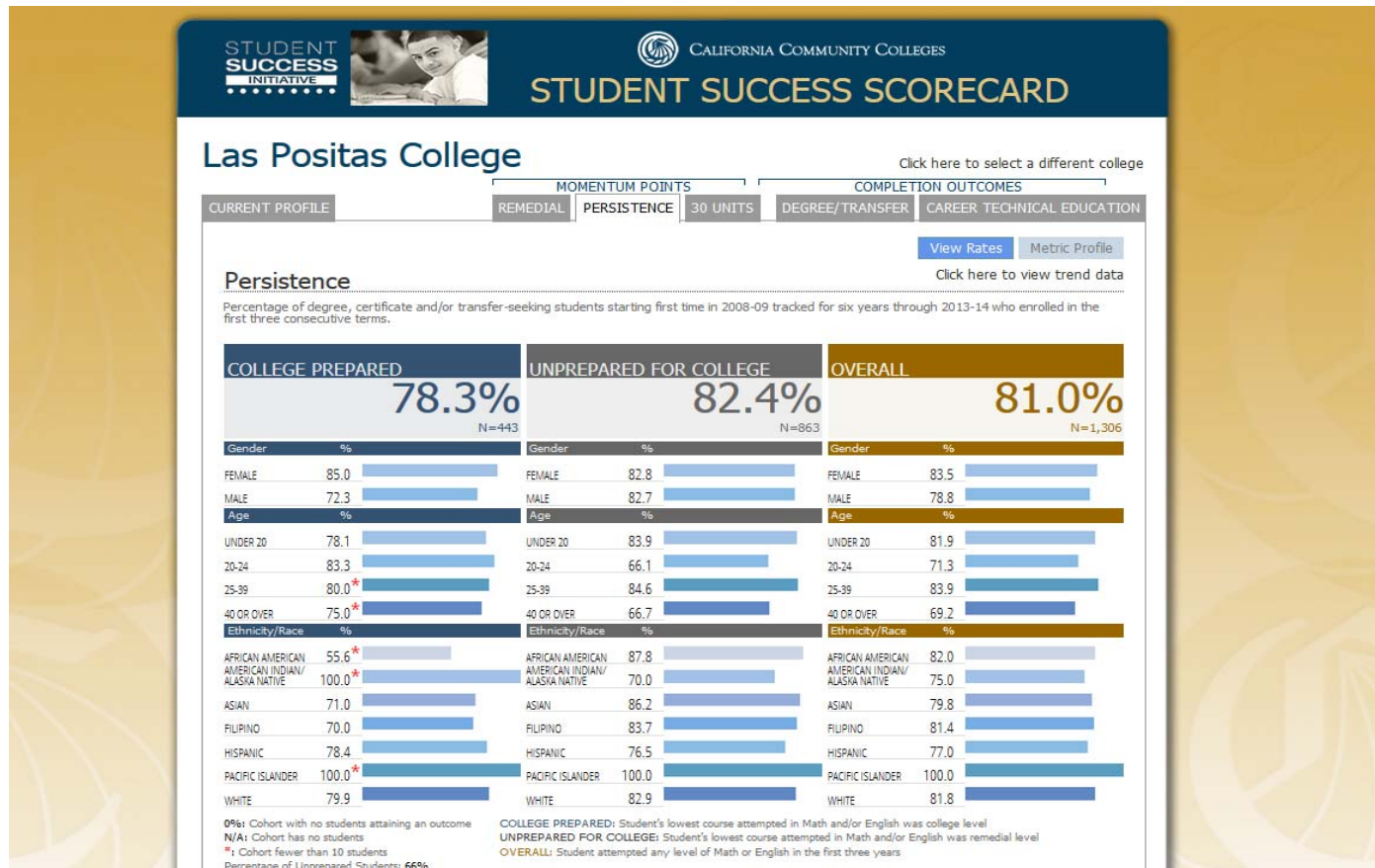
Students by Race-Ethnicity

Fall 2006 to Fall 2015



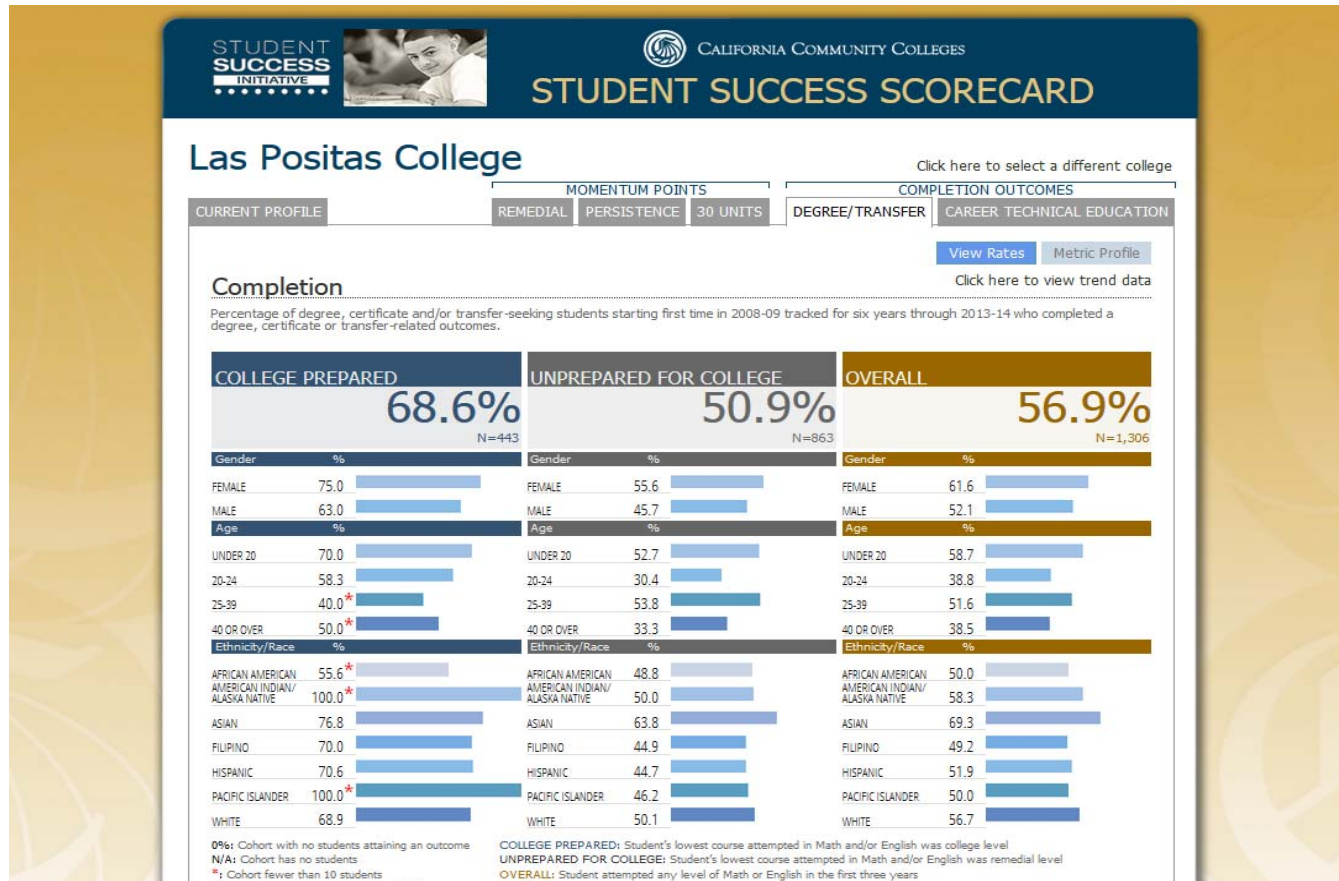
Source: Chabot-Las Positas Institutional Research Dataset. Fall 2015 is based on a preliminary census.

Student Success Scorecard



Source: California Community College Chancellor's Office

Student Success Scorecard



Source: California Community College Chancellor's Office



Salary Surfer

SalarySurfer
California Community Colleges
Chancellor's Office

STUDENT
SUCCESS

Moreno Valley College
Dental Hygiene

Select a Program of Study

Salary Surfer

As students and their families make important decisions about investing their time and money in pursuing a college education, the California Community Colleges Chancellor's Office is making available for the first time comparative information about the earnings of recent graduates who received an award in a specific program area at California community colleges.

The Salary Surfer uses the aggregated earnings of graduates from a five year period to provide an estimate on the potential wages to be earned two years and five years after receiving a certificate or degree in certain disciplines. This tool also provides information on which colleges offer programs in those specific disciplines. The Salary Surfer does not contain information about wages earned by community college students who transfer to a four-year institution.

Source: California Community College Chancellor's Office

Salary Surfer

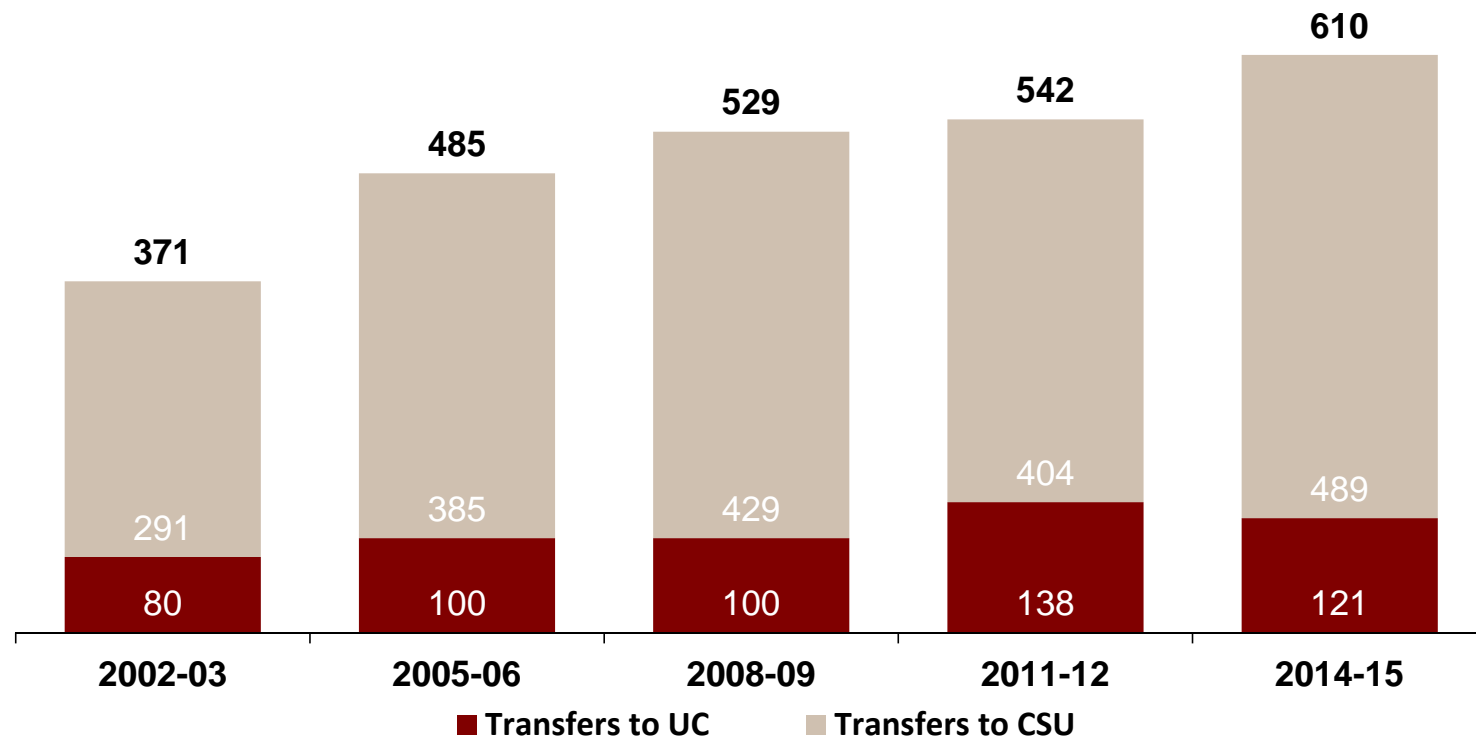
The screenshot displays the Salary Surfer website interface. At the top, there is a navigation bar with the 'Salary Surfer' logo (California Community Colleges Chancellor's Office) and the 'STUDENT SUCCESS' logo. Below the navigation bar, a search dropdown menu is set to 'Biological Science', and a checkbox labeled 'Display only programs with wage data' is checked. The main content area features the heading 'Biological Science' followed by a descriptive paragraph: 'Instructional programs that study life or living matter in all its forms and phenomena, especially with regard to the origin, function, growth, reproduction, heredity, and structure of life forms.' Below this is a table with three columns: 'Curriculum', 'Award Type', and 'Median Annual Salary'. The 'Median Annual Salary' column is further divided into three sub-columns: '2 Years Before', '2 Years After', and '5 Years After'. The table lists three programs: 'Biology, General' (Degree, \$16,655, \$29,013, \$51,041), 'Biotechnology and Biomedical Technology' (Degree, \$18,821, \$47,255, \$59,603), and 'Biotechnology and Biomedical Technology' (Certificate, \$17,778, \$33,649, \$50,013). At the bottom of the interface, there are links for 'Salary Surfer Home', 'Documentation', 'Terms of Use', 'Privacy Statement', 'Accessibility', and 'Contact Us', along with a copyright notice for 2013 by the California Community Colleges Chancellor's Office.

Curriculum	Award Type	Median Annual Salary		
		2 Years Before	2 Years After	5 Years After
⊕ Biology, General	Degree	\$16,655	\$29,013	\$51,041
⊕ Biotechnology and Biomedical Technology	Degree	\$18,821	\$47,255	\$59,603
⊕ Biotechnology and Biomedical Technology	Certificate	\$17,778	\$33,649	\$50,013

Source: California Community College Chancellor's Office

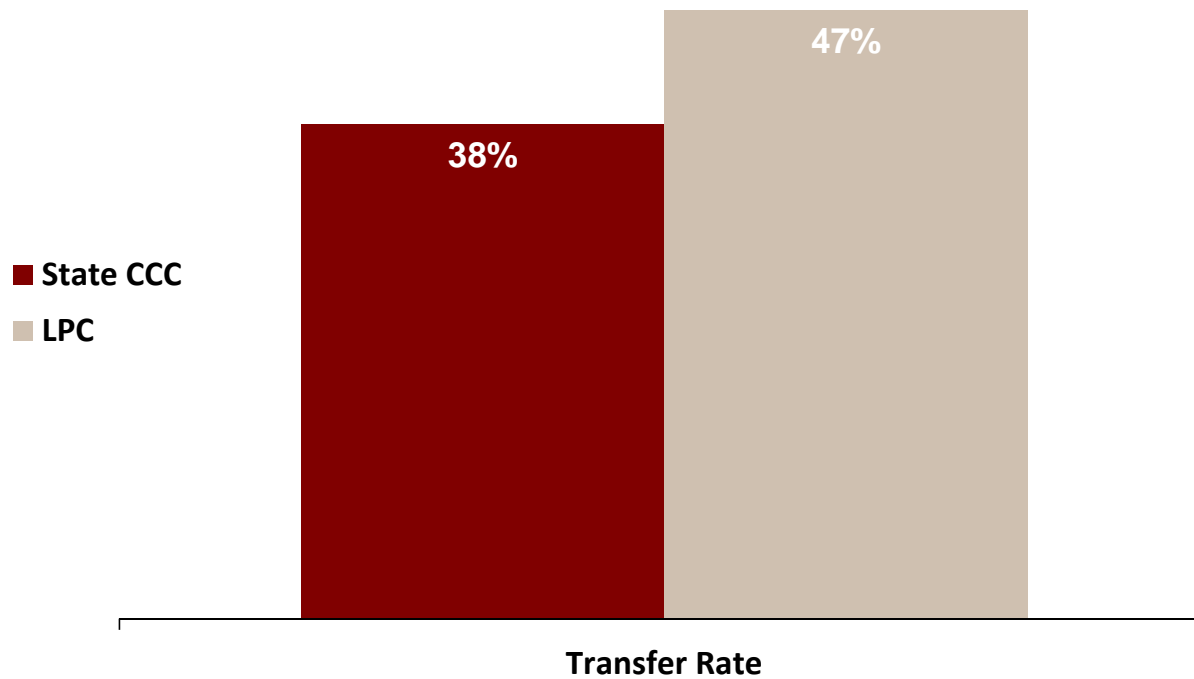
Transfer Success – UC and CSU

2002-03 to 2014-15



Source: Analytic Studies, California State University Analytic Studies;
Institutional Research and Academic Planning, UC Office of the President

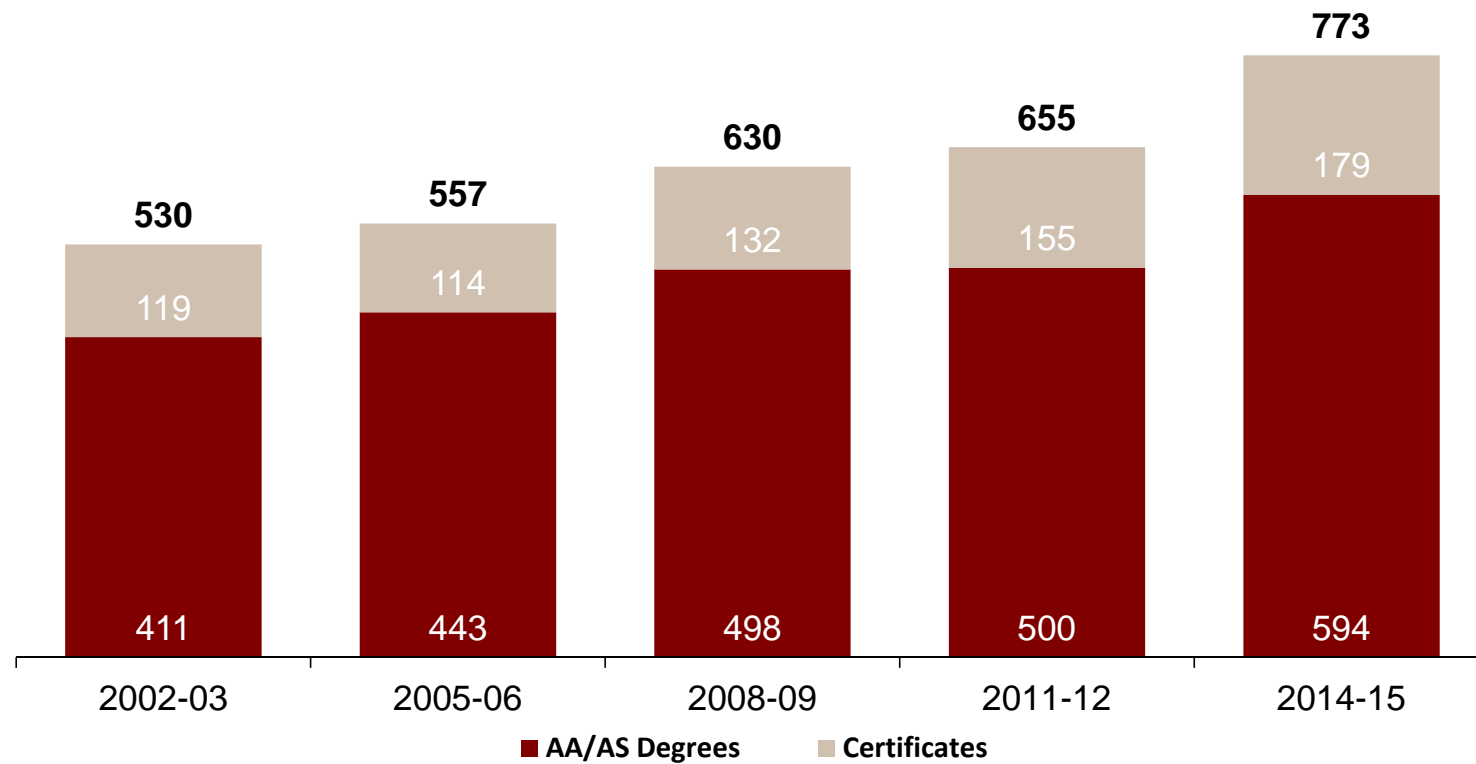
Transfer Rate LPC Outpaces State



Note: Data shows the transfer outcomes of students who first enrolled in 2008-09, after a 6-year period
Source: Datamart, California Community College Chancellor's Office

Degrees and Certificates

From 2002-03 to 2014-15



Source: LPC Office of Institutional Research & Planning



5 Year Educational Master Plan

- Educational Excellence
- Community Collaboration
- Supportive Organizational Resources
- Organizational Effectiveness

New Staff for 2015-2016

- Graphic Design
- Music (Piano)
- Music (Choral)
- Sociology
- English (2 positions)
- Accounting
- Business Entrepreneurship
- Basketball Coach
- Computer Science
- Math (3 positions)
- Physics/Astronomy
- Vice President of Academic Services
- Executive Director of the Foundation

New Staff for 2016-2017

- Anthropology
- Art
- Biology
- Computer Networking
Technology
- Counselor
- Emergency Medical Services
- English
- Health
- History
- Horticulture/Viticulture
- Humanities
- Kinesiology/Men's Head Soccer Coach
- Math (2 positions)
- Political Science
- Psychology
- Theater
- SSSP Categorically Funded Counselor
(2 positions)
- Dean Position

Reaching Out to Our Community

Courses Offered at Local High Schools

Village High School

Ethics

World Religions

Dublin High School

American Cultures in Music

Life Span Psychology

Livermore High School

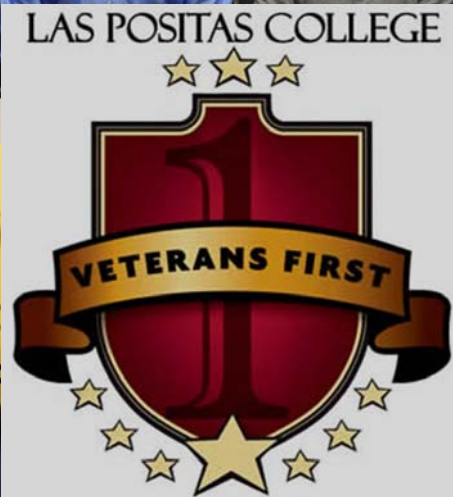
Introduction to Welding

Livermore Adult Education

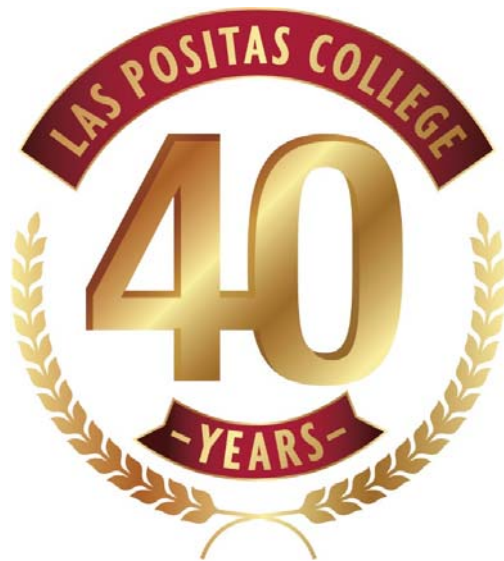
The Science of Nutrition

Education that Prepares Students for Careers





What's New at LPC?



Four Decades of Scholarship

Middle
College



Accrediting Commission for Community and Junior Colleges
Western Association of Schools and Colleges



Basketball State Tournament



March 11 – 13, 2016

Water Polo State Tournament



Fall 2016



Las Positas College

Your Community's College

We hope you will join us on campus for a theater event, game or meeting soon.

Barry A. Russell, Ph.D.
brussell@laspositascollege.edu
925.424.1001

