

# The Future of Las Positas College

Leadership Livermore

January 2016

Barry A. Russell, Ph.D.

President

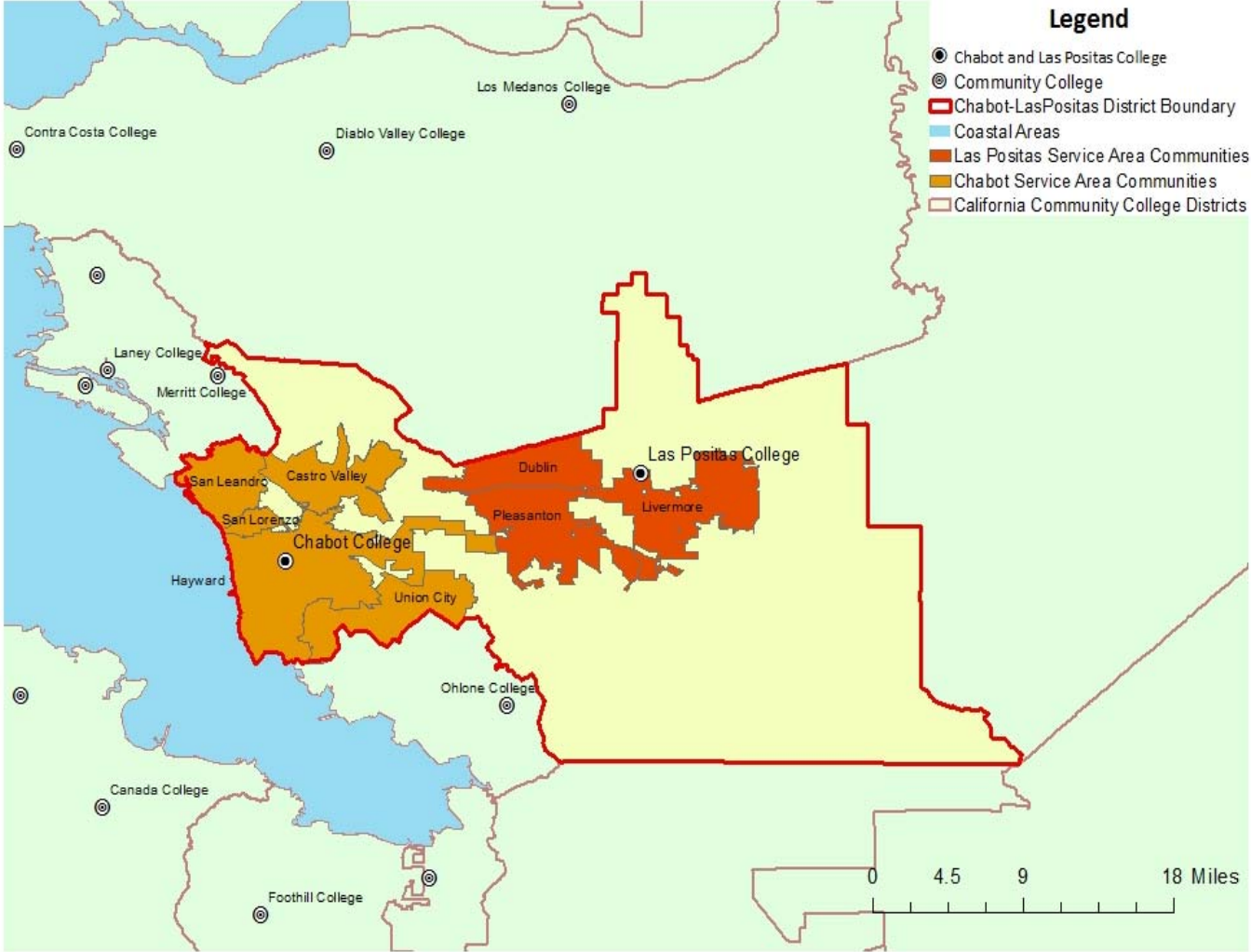


# Las Positas College - Our Community's College

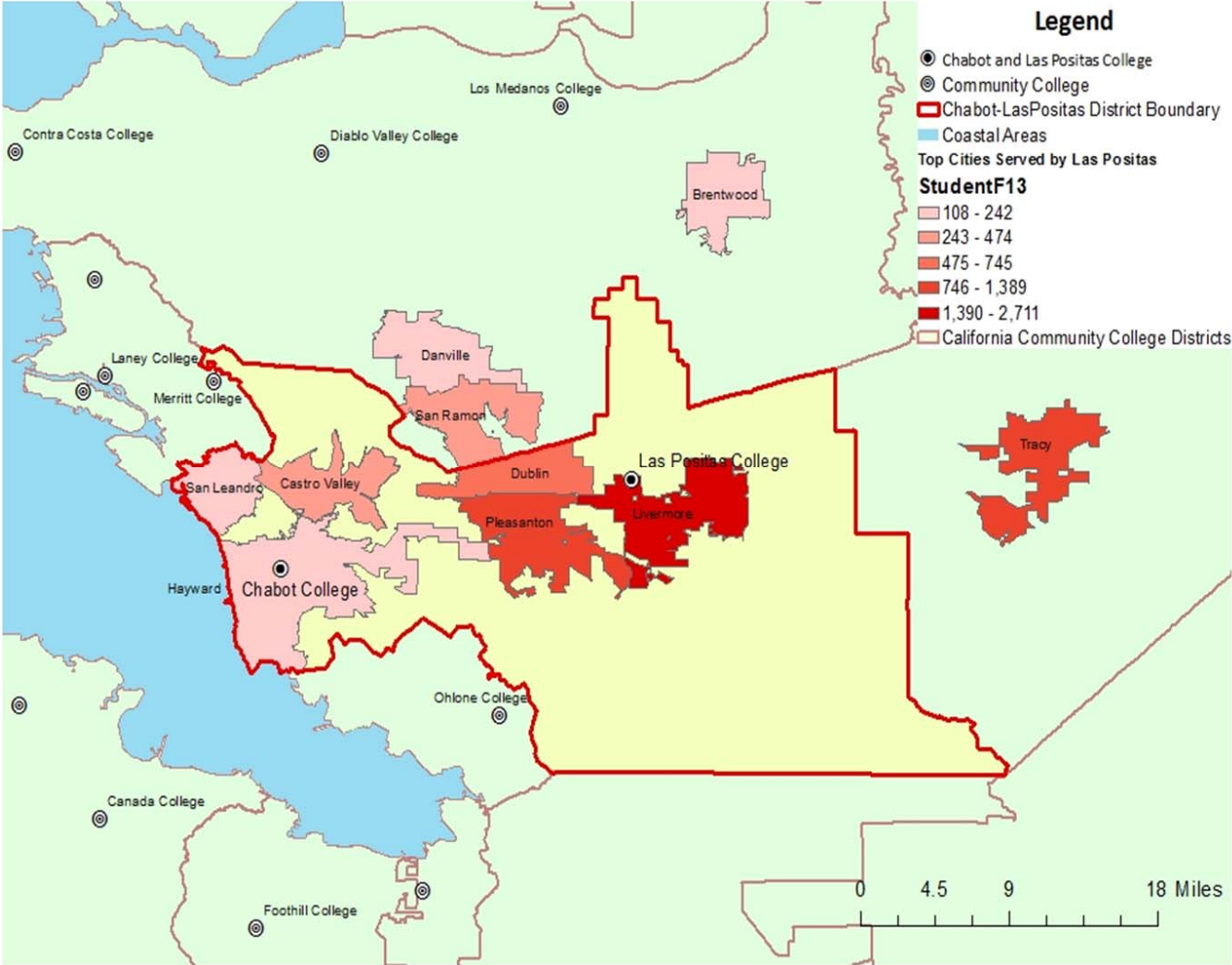
Las Positas College is an inclusive learning-centered institution providing educational opportunities and support for completion of students' transfer, degree, basic skills, career-technical, and retraining goals.



# CLPCC District Service Area



# Las Positas: Top Cities Served



# Measure B Projects Nearing Completion



# Measure B Projects Support Sustainability

  
**24% more Efficient**  
Our buildings are 24% more efficient than traditional buildings

  
**30% Less**

Innovative technology helps reduce water consumption by 30%



  
**Bioretention Basins**

Bioretention basins help mitigate storm water run-off and keep pollutants out of the watershed



  
**Non-Toxic**

Campus uses non-toxic, green cleaning methods



# Library Renovation



# Amphitheater



LAS POSITAS COLLEGE THEATER ARTS DEPARTMENT PRESENTS

## A FUNNY THING HAPPENED ON THE WAY TO THE FORUM

BOOK BY BURT SHEVOLVE AND LARRY GELBART  
MUSIC AND LYRICS BY STEPHEN SONDHEIM

ORIGINALLY PRODUCED ON BROADWAY BY HAROLD S. PRINCE



JULY 23RD THROUGH JULY 26TH  
8:00 PM

DIRECTED BY WESLEY MORGAN  
MUSICAL DIRECTION BY MARK DIETRICH  
CHOREOGRAPHY BY FAITH BLEVINS

TICKETS  
STUDENTS & SENIORS \$10.00  
GENERAL ADMISSION \$15.00

TICKETS CAN BE PURCHASED AT:  
HOWIE LARSEN/STANISLAW KIRBY PERFORMINGARTS/  
PRODUCED BY SPECIAL ARRANGEMENTS WITH MUSIC THEATRE INTERNATIONAL (MTI)

AT THE BARBARA J. MERVIS CENTER FOR THE ARTS AMPHITHEATER





# New Classroom Building



**Opening Fall 2018**

# New Classroom Building



# Portable Buildings



# Fletcher Benton Sculpture



# Veterans Center



# Building 700



# Verizon Tower



Existing



Proposed



# Local Demographics



# Population Growth 2014-2024

## Cities in Service Area vs. County

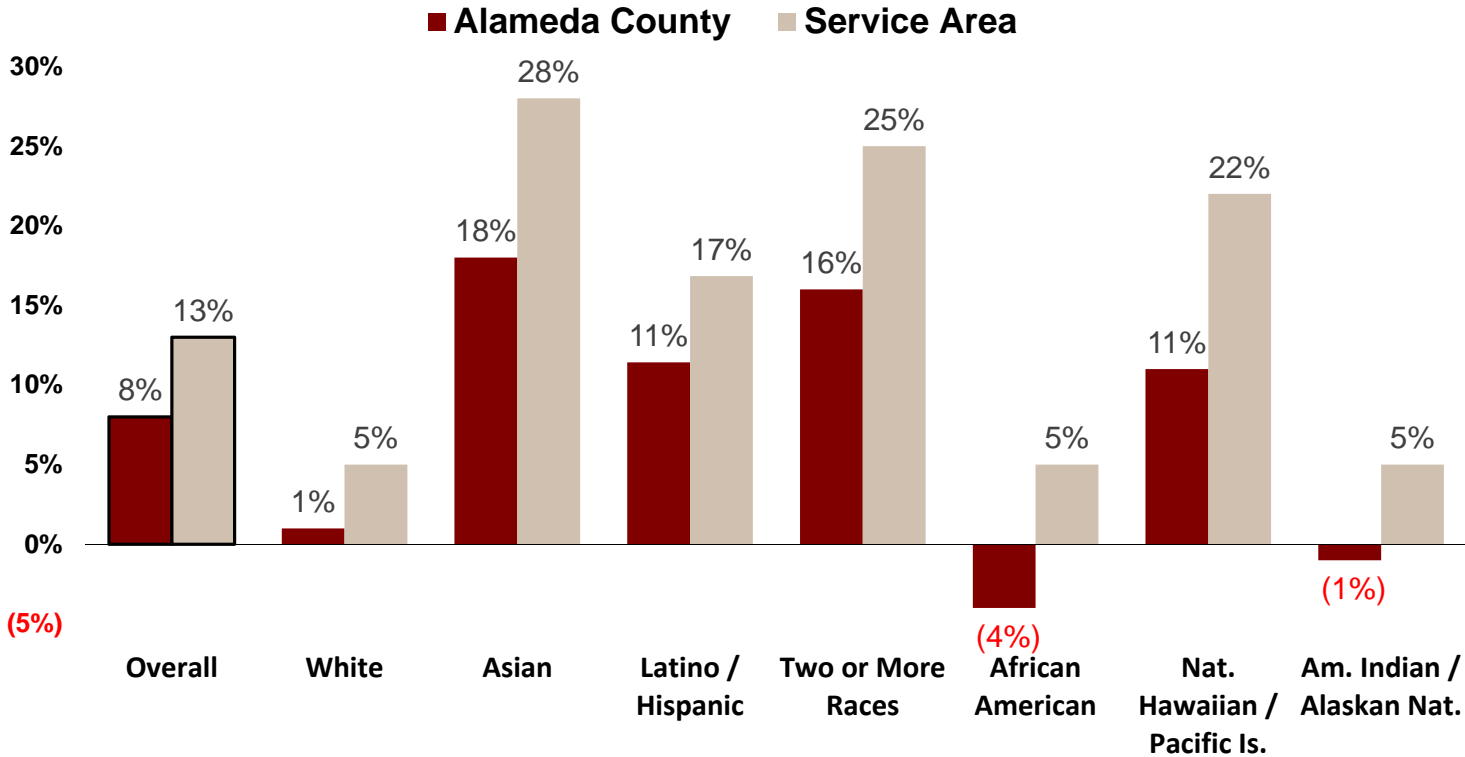
Region	2014	2024	Total Growth	Percent Change 2014-2024
Dublin	53,765	66,198	12,433	23%
Livermore	88,044	93,510	5,466	6%
Pleasanton	77,374	86,976	9,602	12%
<b>Service Area Total</b>	<b>219,182</b>	<b>246,684</b>	<b>27,502</b>	<b>13%</b>
<b>Alameda County</b>	<b>1,610,934</b>	<b>1,745,340</b>	<b>134,406</b>	<b>8%</b>

Source: Economic Modeling Specialist International Q3 2015 Data Set



# Population Growth 2014-2024

## Projected Percent Change by Race-Ethnicity



Source: Economic Modeling Specialist International Q3 2015 Data Set

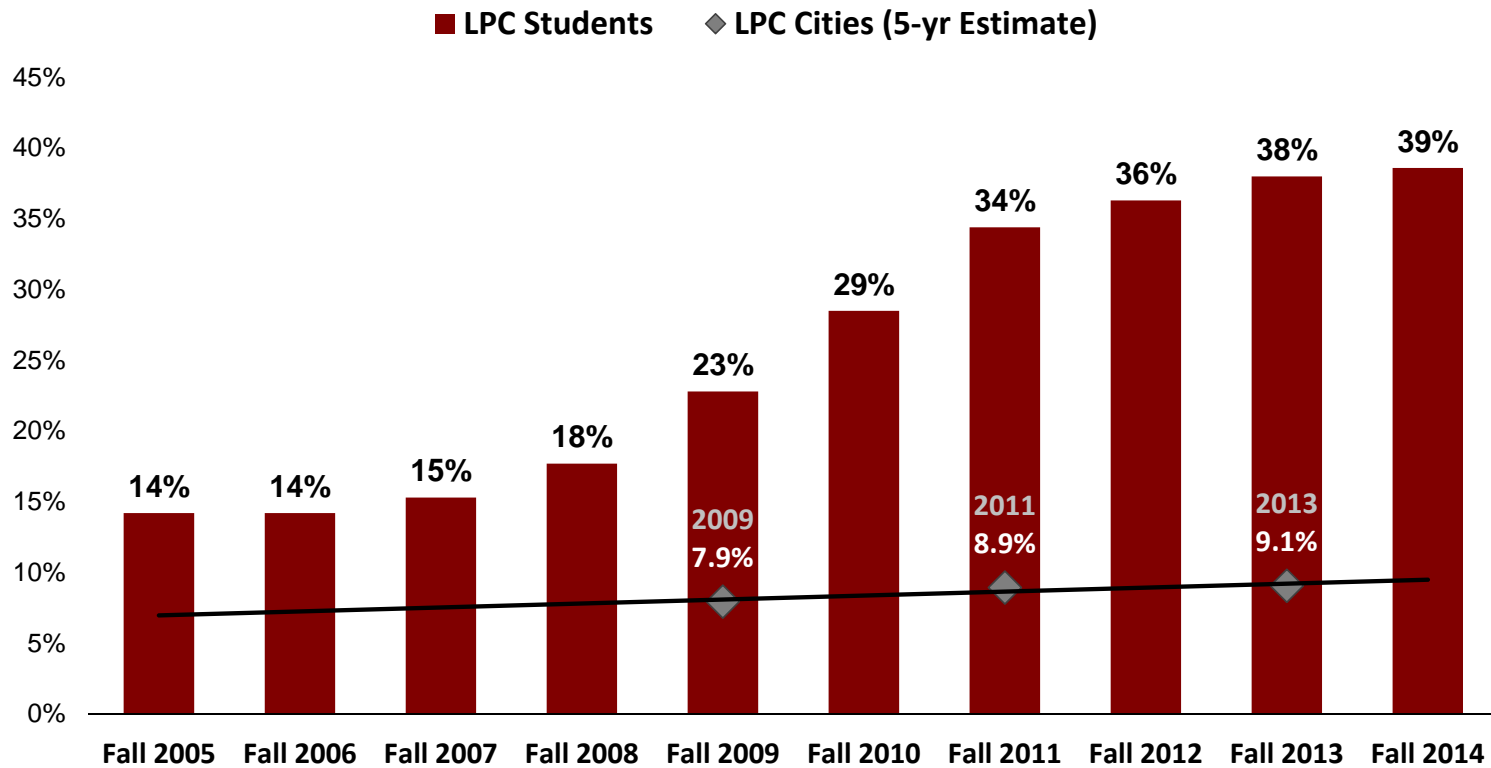


# Las Positas College Demographics



# Population in Poverty

## LPC Students vs. Service Area Population



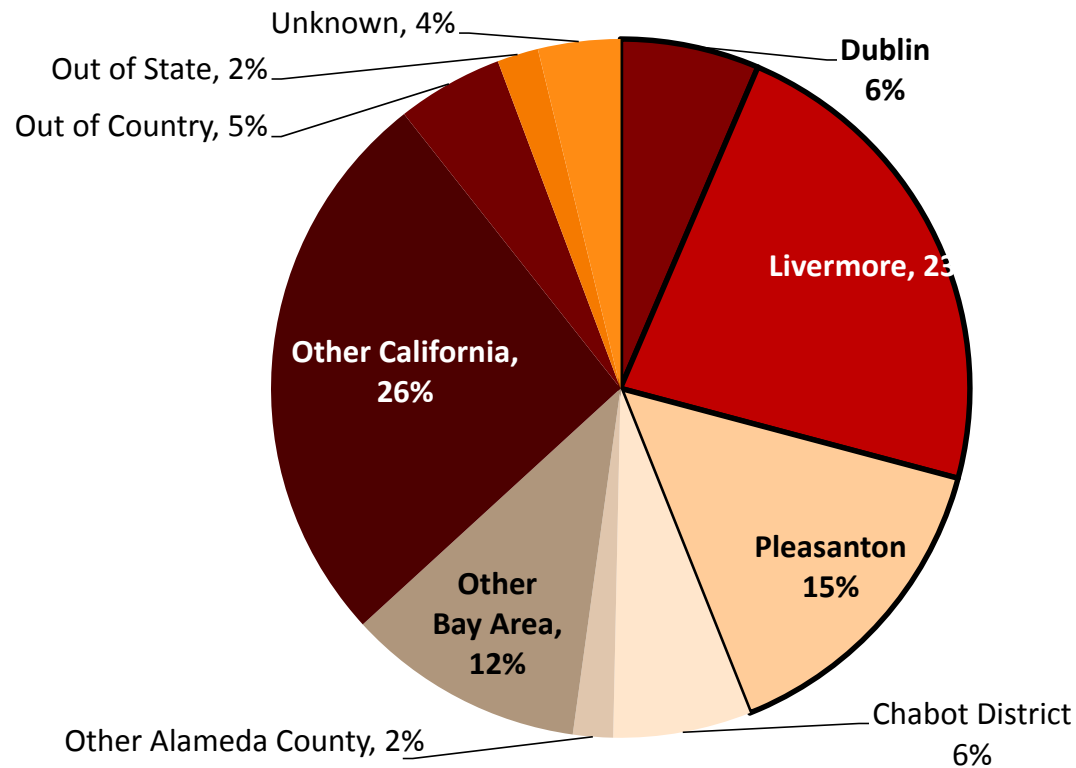
Note: Students in poverty are those receiving income-based financial assistance. Poverty in the general population is 150% below the federal poverty level.

Source: Chabot-Las Positas Institutional Research Dataset;  
U.S. Census Bureau, American Community Survey 5-year Estimates (Table S1701)



# School Districts of Incoming H.S. Students

## Fall 2015

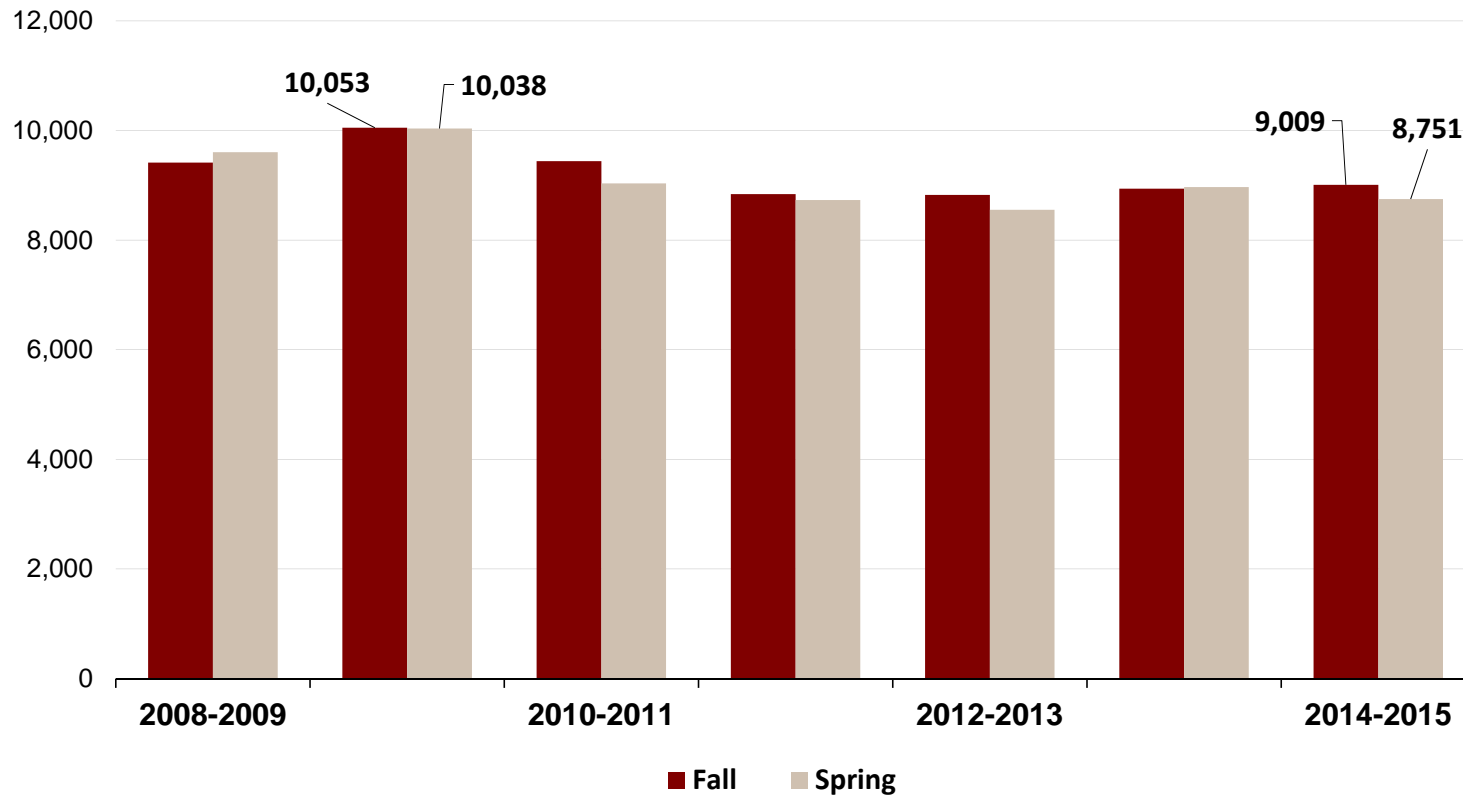


- **44% of Las Positas students are from LPC's service area**

Source: Chabot-Las Positas Institutional Research Dataset, Fall 2015 Census, Preliminary Count

# LPC by the Numbers

## Headcount: Fall vs. Spring: 2007-08 to 2013-14

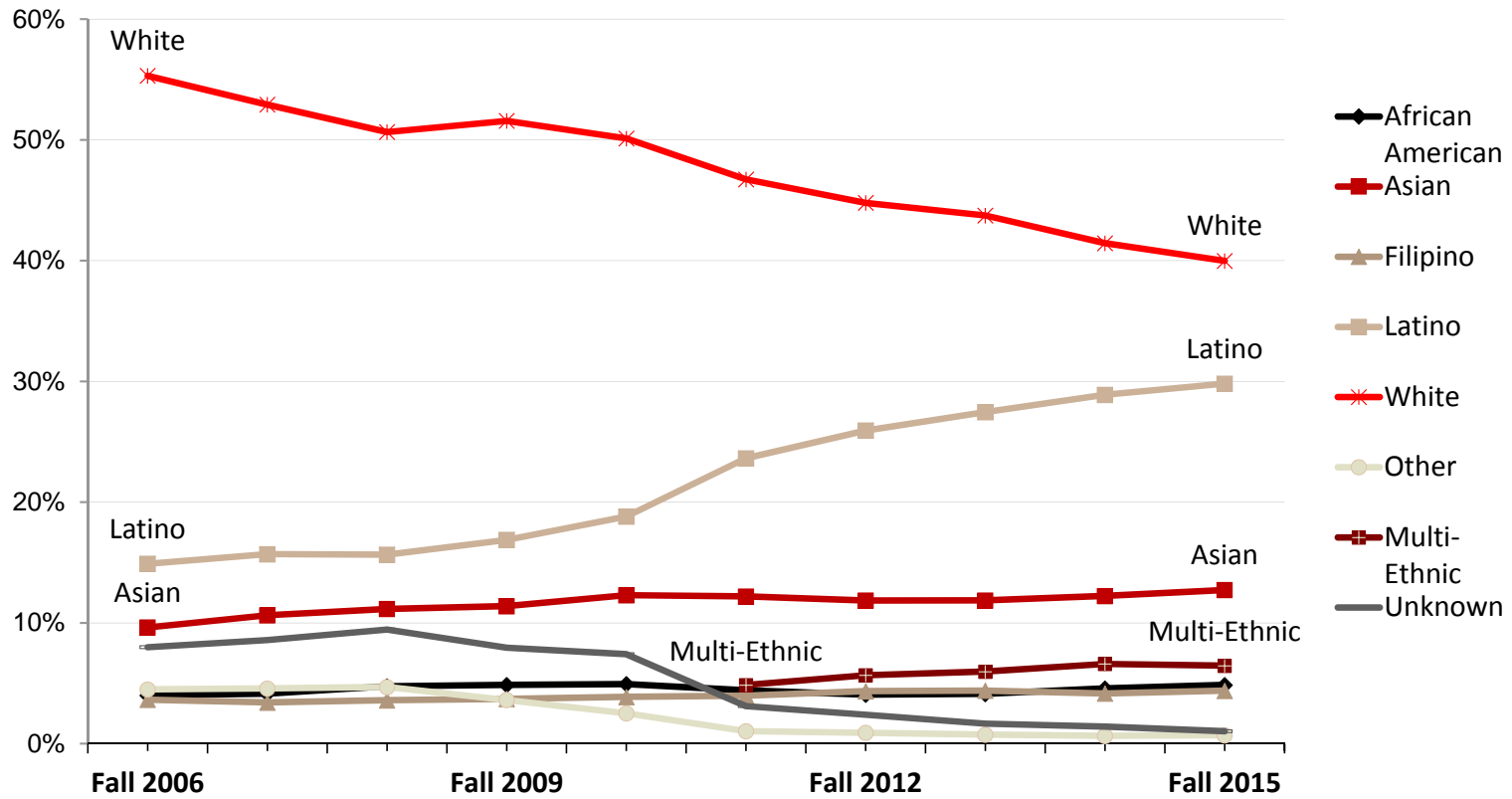


Source: LPC Office of Institutional Research & Planning



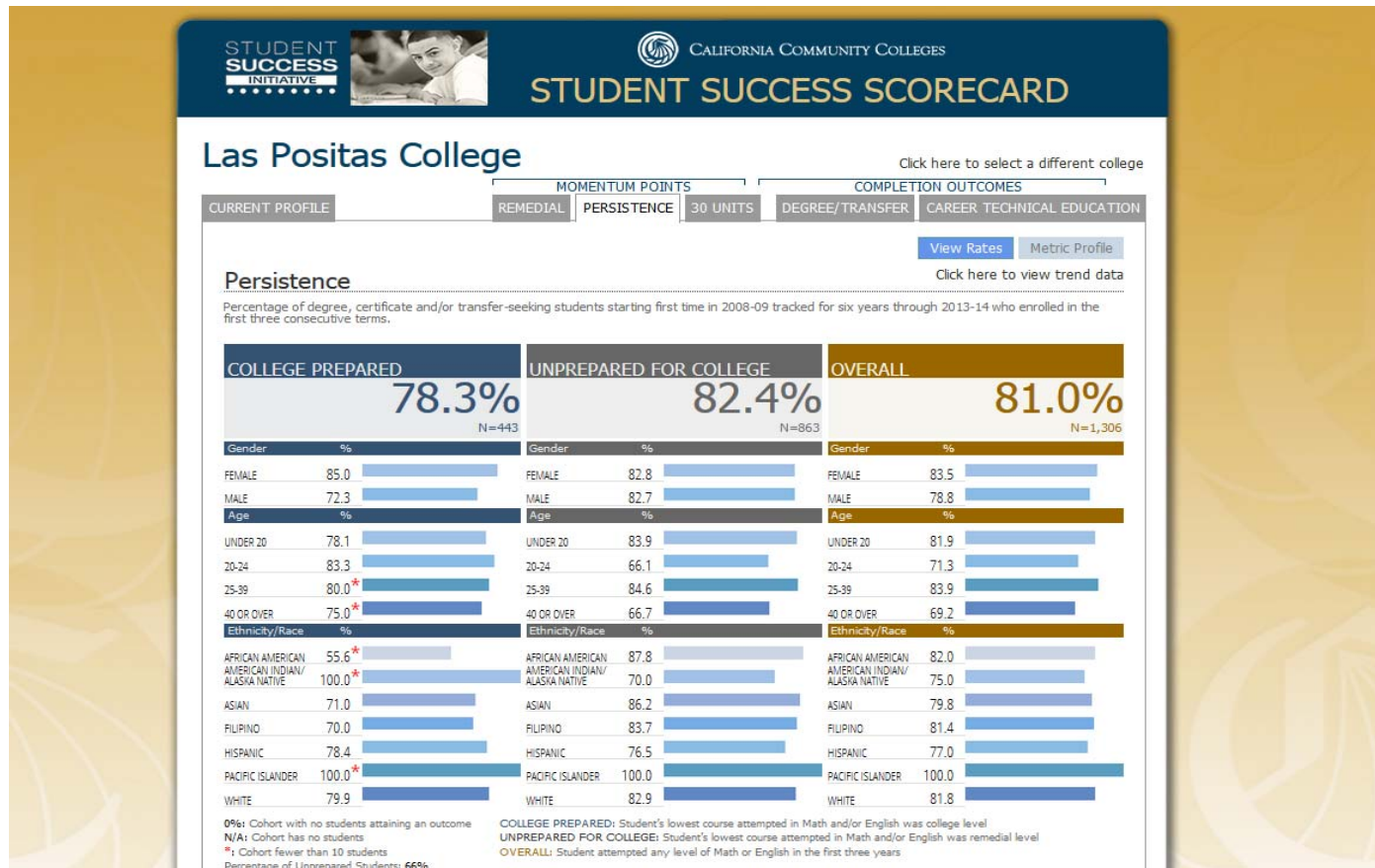
# Students by Race-Ethnicity

## Fall 2006 to Fall 2015



Source: Chabot-Las Positas Institutional Research Dataset. Fall 2015 is based on a preliminary census.

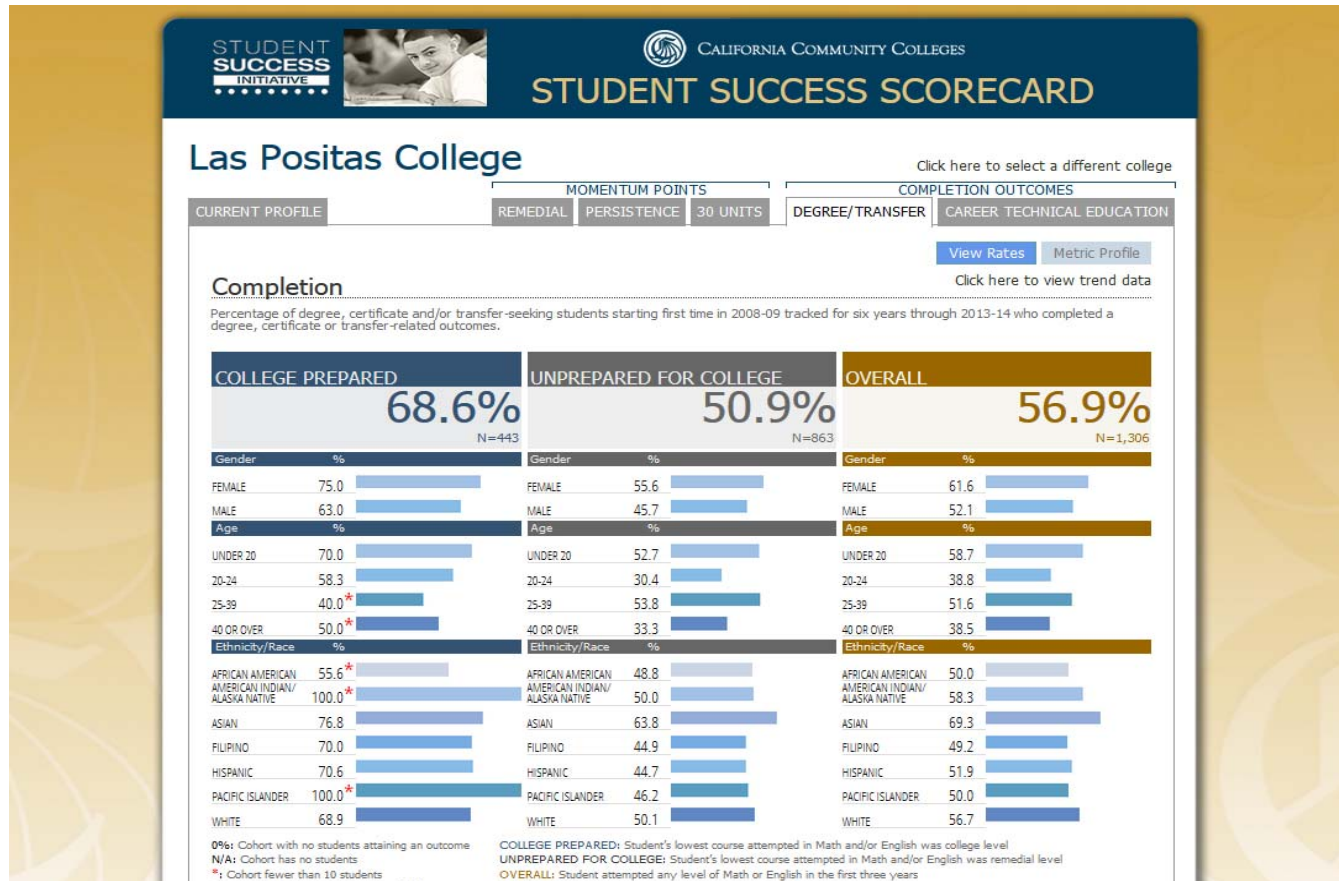
# Student Success Scorecard



Source: California Community College Chancellor's Office



# Student Success Scorecard



Source: California Community College Chancellor's Office



# Salary Surfer

**SalarySurfer**  
California Community Colleges  
Chancellor's Office

STUDENT  
SUCCESS

Moreno Valley College  
Dental Hygiene

Select a Program of Study

### Salary Surfer

As students and their families make important decisions about investing their time and money in pursuing a college education, the California Community Colleges Chancellor's Office is making available for the first time comparative information about the earnings of recent graduates who received an award in a specific program area at California community colleges.

The Salary Surfer uses the aggregated earnings of graduates from a five year period to provide an estimate on the potential wages to be earned two years and five years after receiving a certificate or degree in certain disciplines. This tool also provides information on which colleges offer programs in those specific disciplines. The Salary Surfer does not contain information about wages earned by community college students who transfer to a four-year institution.

**Source:** California Community College Chancellor's Office

# Salary Surfer

The screenshot shows the Salary Surfer interface with the following elements:

- Header:** Salary Surfer logo (California Community Colleges Chancellor's Office) and Student Success logo.
- Search Bar:** A dropdown menu set to "Biological Science" and a checked checkbox for "Display only programs with wage data".
- Section Title:** "Biological Science" with a descriptive paragraph: "Instructional programs that study life or living matter in all its forms and phenomena, especially with regard to the origin, function, growth, reproduction, heredity, and structure of life forms."
- Table:** A table with columns for Curriculum, Award Type, and Median Annual Salary (subdivided into 2 Years Before, 2 Years After, and 5 Years After).
- Footer:** Navigation links (Home, Documentation, Terms of Use, Privacy Statement, Accessibility, Contact Us) and copyright information (© 2013 by California Community Colleges Chancellor's Office).

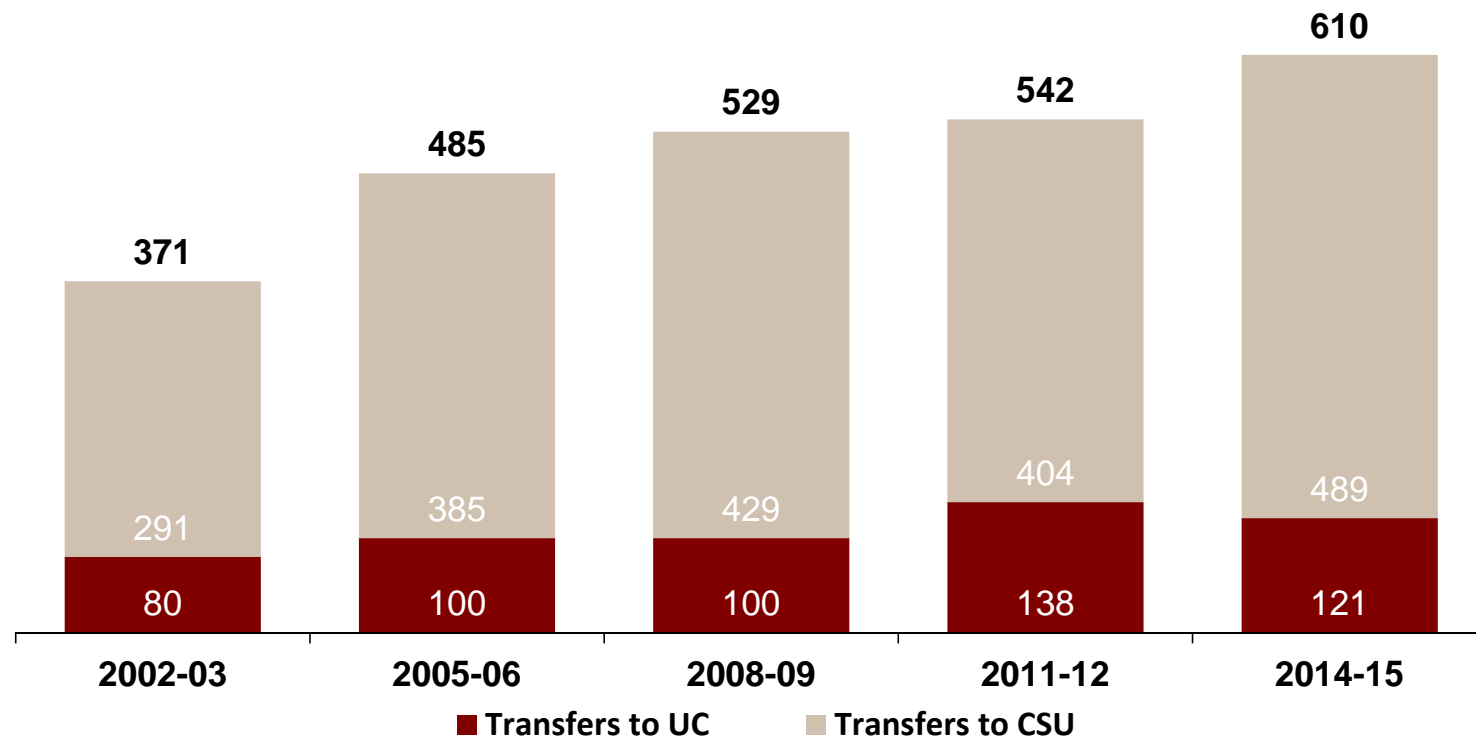
Curriculum	Award Type	Median Annual Salary		
		2 Years Before	2 Years After	5 Years After
⊕ Biology, General	Degree	\$16,655	\$29,013	\$51,041
⊕ Biotechnology and Biomedical Technology	Degree	\$18,821	\$47,255	\$59,603
⊕ Biotechnology and Biomedical Technology	Certificate	\$17,778	\$33,649	\$50,013

Source: California Community College Chancellor's Office



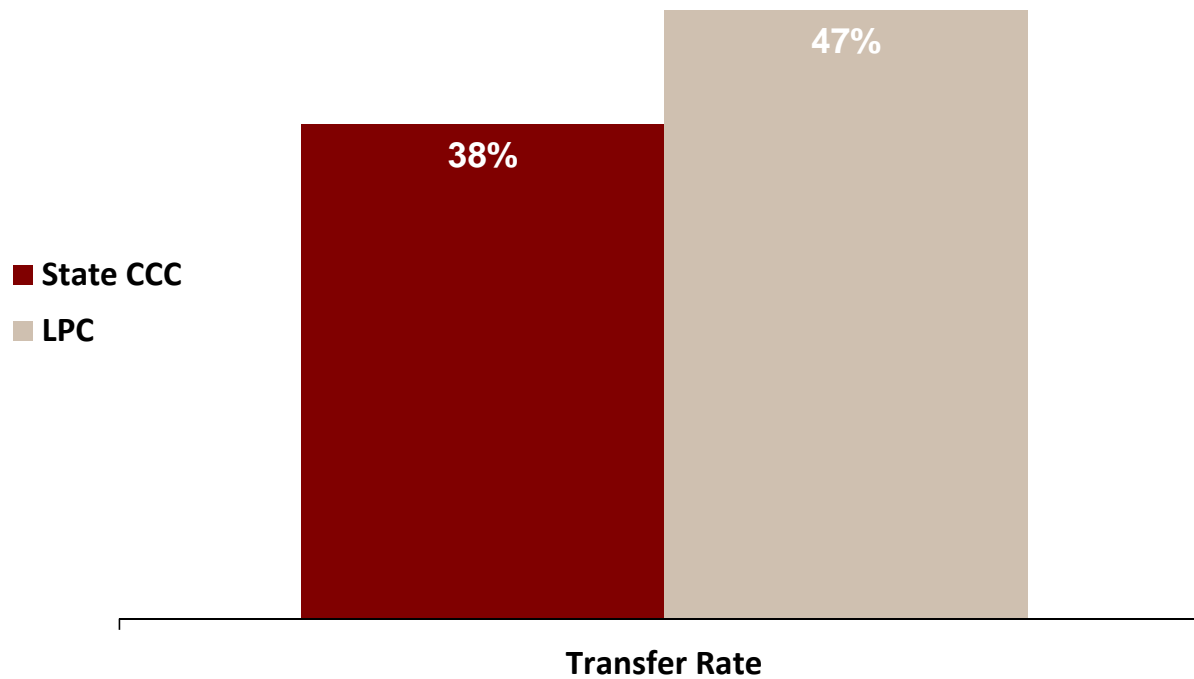
# Transfer Success – UC and CSU

## 2002-03 to 2014-15



Source: Analytic Studies, California State University Analytic Studies;  
Institutional Research and Academic Planning, UC Office of the President

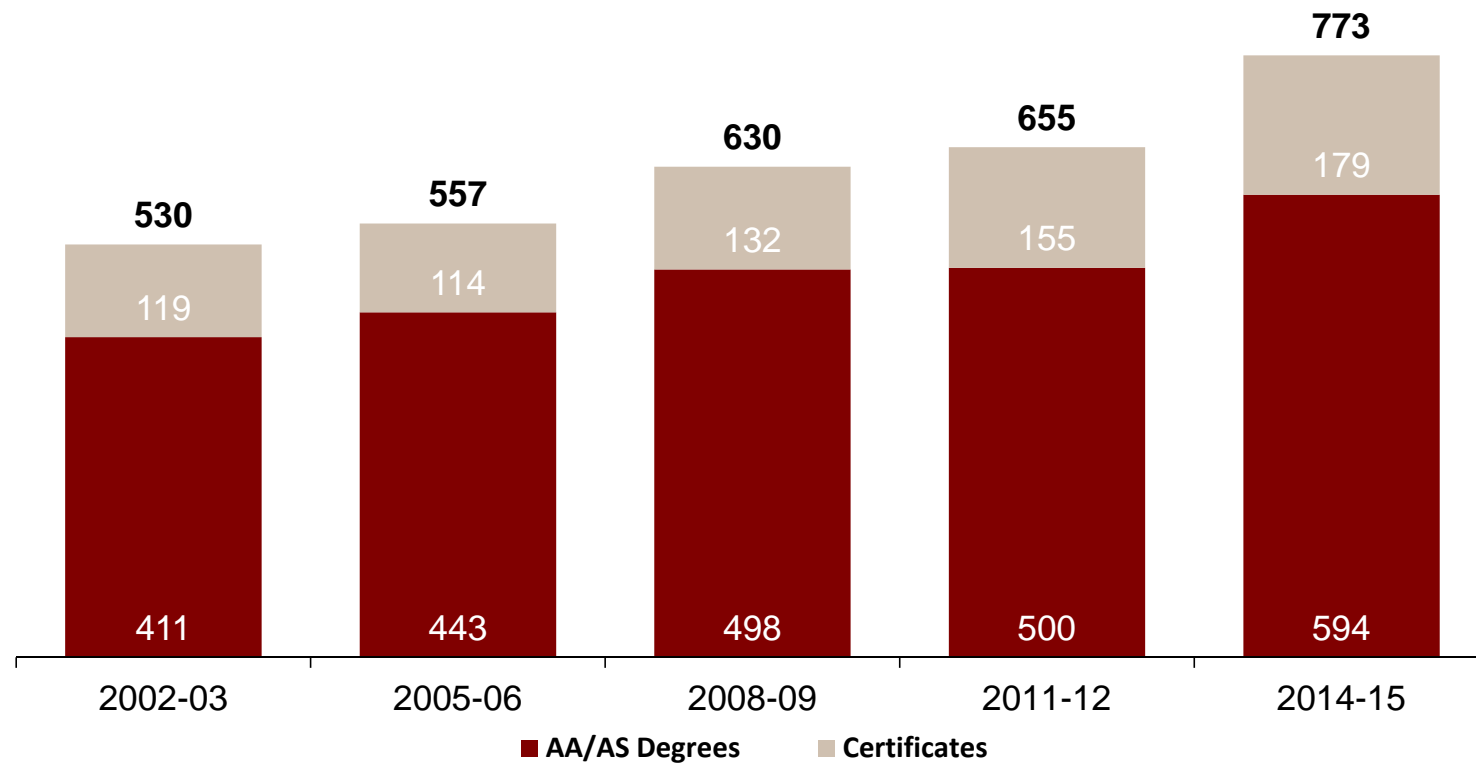
# Transfer Rate LPC Outpaces State



**Note:** Data shows the transfer outcomes of students who first enrolled in 2008-09, after a 6-year period  
**Source:** Datamart, California Community College Chancellor's Office

# Degrees and Certificates

## From 2002-03 to 2014-15



Source: LPC Office of Institutional Research & Planning



# 5 Year Educational Master Plan

- Educational Excellence
- Community Collaboration
- Supportive Organizational Resources
- Organizational Effectiveness

## New Staff for 2015-2016

- Graphic Design
- Music (Piano)
- Music (Choral)
- Sociology
- English (2 positions)
- Accounting
- Business Entrepreneurship
- Basketball Coach
- Computer Science
- Math (3 positions)
- Physics/Astronomy
- Vice President of Academic Services
- Executive Director of the Foundation



## New Staff for 2016-2017

- Anthropology
- Art
- Biology
- Computer Networking  
Technology
- Counselor
- Emergency Medical Services
- English
- Health
- History
- Horticulture/Viticulture
- Humanities
- Kinesiology/Men's Head Soccer Coach
- Math (2 positions)
- Political Science
- Psychology
- Theater
- SSSP Categorically Funded Counselor  
(2 positions)
- Dean Position

# Reaching Out to Our Community

## Courses Offered at Local High Schools

### Village High School

Ethics

World Religions

### Dublin High School

American Cultures in Music

Life Span Psychology

### Livermore High School

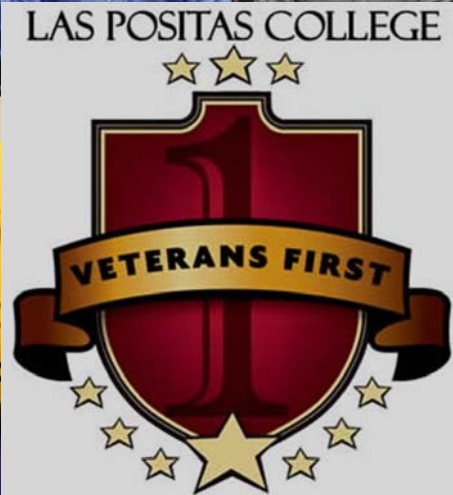
Introduction to Welding

### Livermore Adult Education

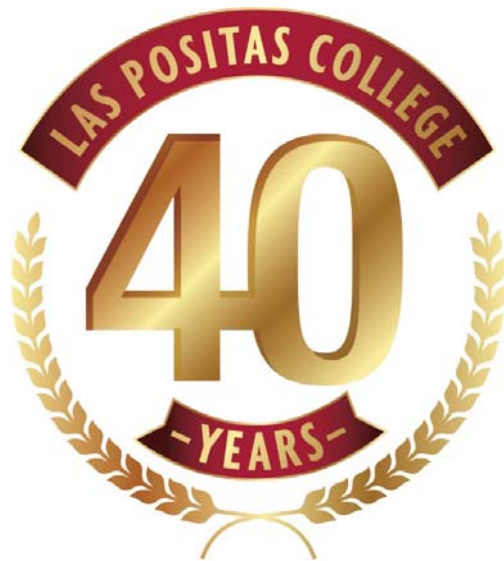
The Science of Nutrition

# Education that Prepares Students for Careers





# What's New at LPC?



*Four Decades of Scholarship*

Middle  
College



Accrediting Commission for Community and Junior Colleges  
Western Association of Schools and Colleges



# Basketball State Tournament



**March 11 – 13, 2016**

# Water Polo State Tournament



## Fall 2016



# Las Positas College

## Your Community's College

We hope you will join us on campus for a theater event, game or meeting soon.

**Barry A. Russell, Ph.D.**  
**[brussell@laspositascollege.edu](mailto:brussell@laspositascollege.edu)**  
**925.424.1001**

