

Las Positas College Convocation 2015-2016

Barry A. Russell, Ph.D.
President

August 13, 2015



Faculty Welcome

Melissa Korber, President, Faculty Senate



Classified Welcome

Bill Eddy, President of Classified Senate





Barry Russell, Ph.D., President

























Four Decades of Scholarship

Mission

Las Positas College strives to be an **inclusive** California's premier Community College, setting the standard through opportunities for developing knowledge, skills, **completion** of **values**, and **abilities** that foster engaged and contributing members of the society. **retraining goals.**

Vision

Reminder

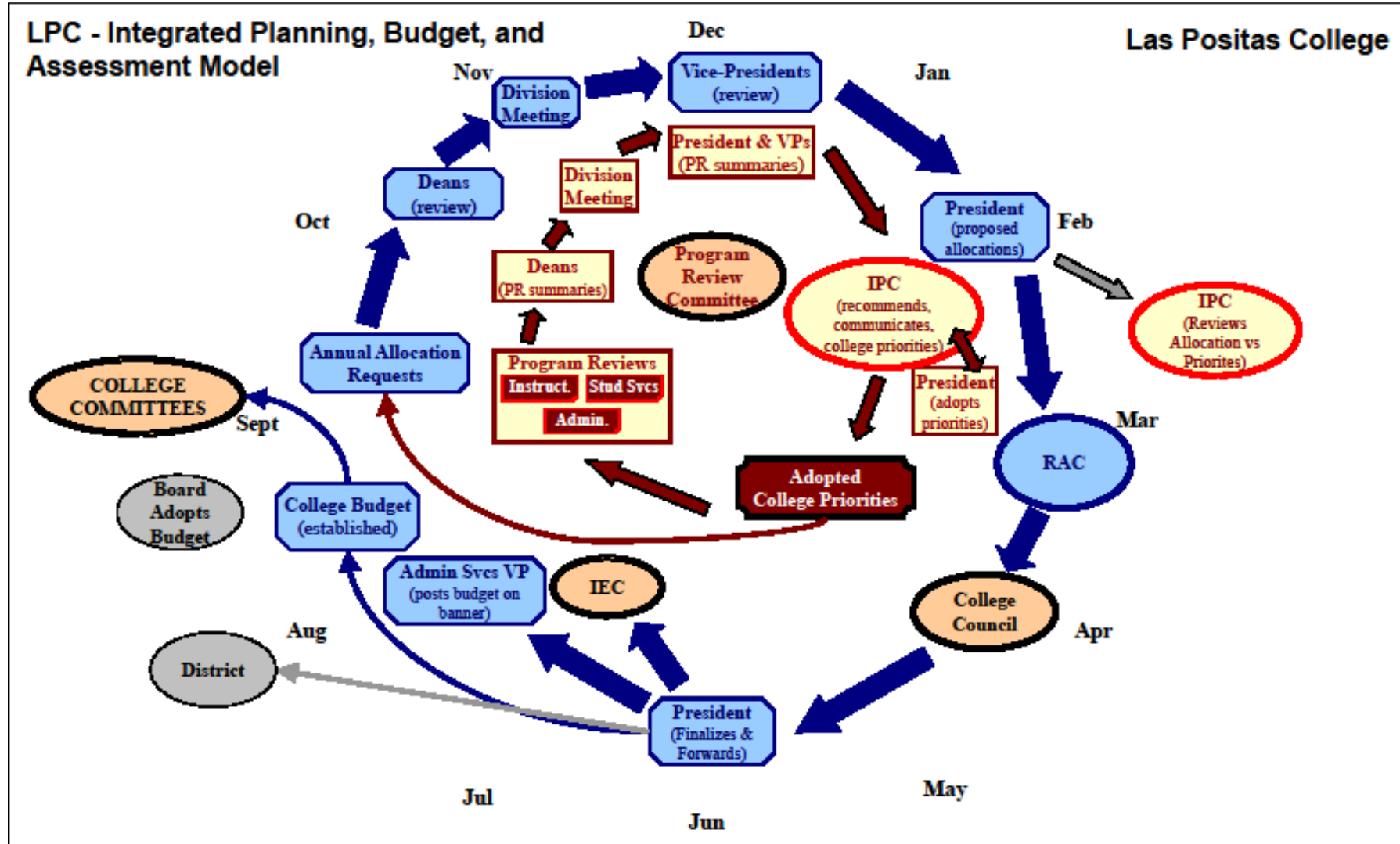
Planning Priorities for 2014-2015

- Support for the curriculum process
- Technology utilization with an emphasis on staff development
- Success and persistence through the Basic skills sequence
- Accreditation

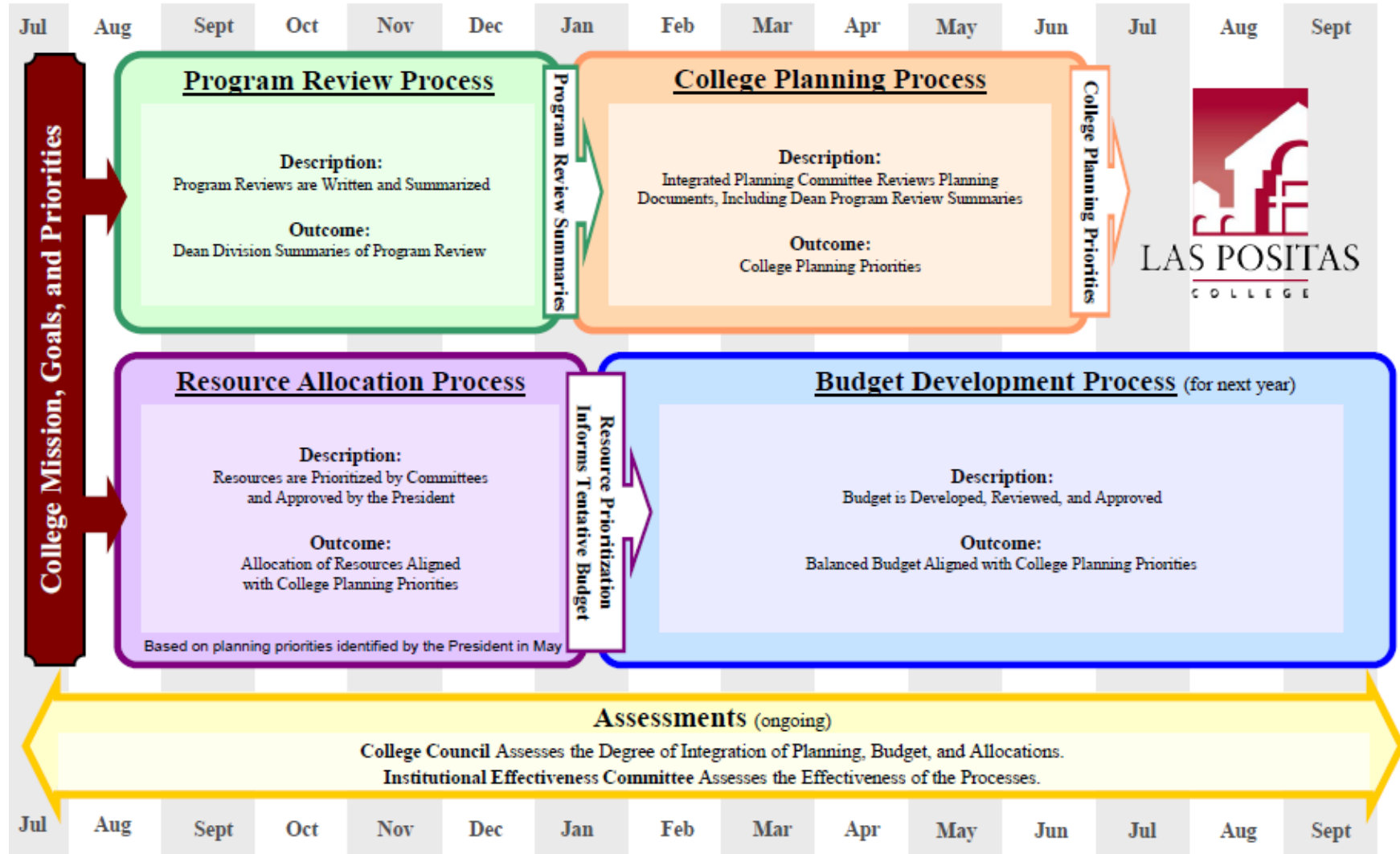
Planning Priorities for 2015-2016

- Establish regular and ongoing processes to implement best practices to meet ACCJC standards
- Provide necessary institutional support for curriculum development and maintenance
- Develop processes to facilitate ongoing meaningful assessment of SLOs and integrate assessment of SLOs into college processes
- Expand tutoring services to meet demand and support student success in Basic Skills, CTE, and Transfer courses

You've come a long way baby....



Las Positas College's Integrated Planning and Budget Cycle



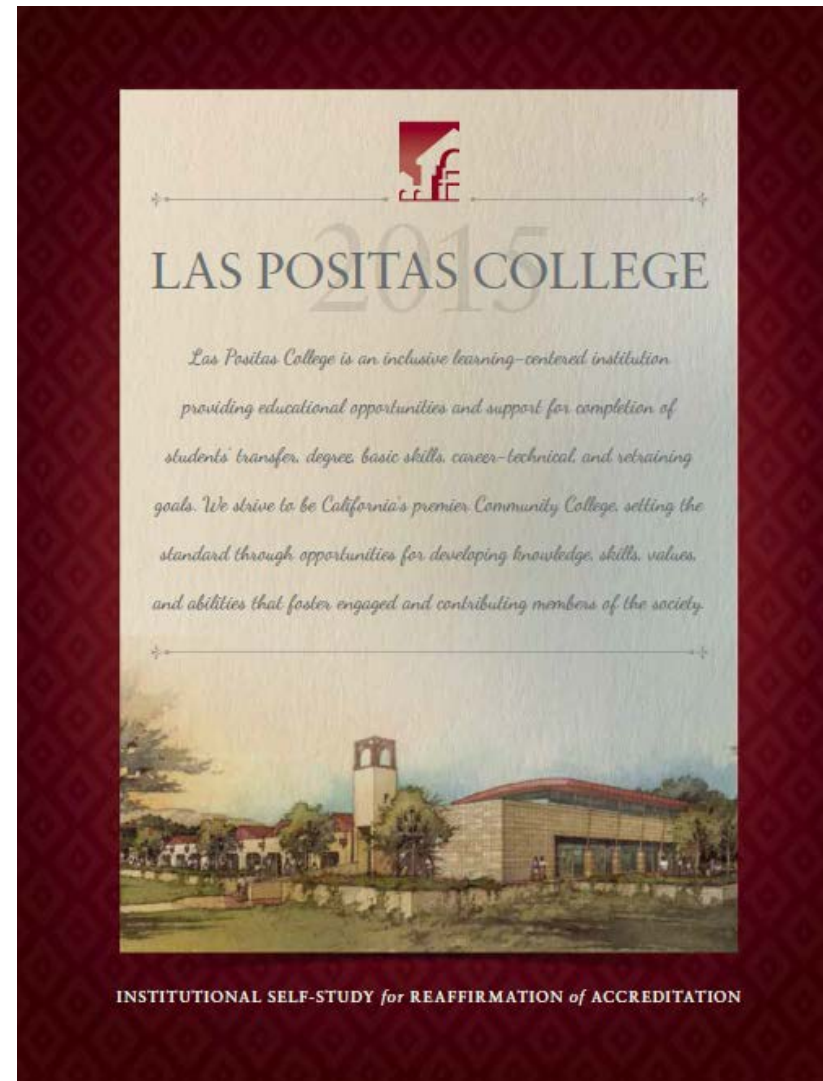
Accreditation

Accrediting Team Site Visit:

Monday, October 5, 2015

through

Thursday, October 8, 2015



INSTITUTIONAL SELF-STUDY for REAFFIRMATION of ACCREDITATION

Educational Master Plan



Progress on Academic Priorities



Student Learning Outcomes

Category	Percentage
Courses with SLOs	99%
Courses with On-Going Assessments	93%
Degrees, Certificates with Outcomes	100%
Degrees, Certificates with On-Going Assessments	93%



ADT Progress

Approved Degrees

- Administration of Justice (AS-T)
- Anthropology (AA-T)
- Business Administration (AS-T)
- ECD (AS-T)
- English (AA-T)
- Geography (AA-T)
- Geology (AS-T)
- History (AA-T)
- Journalism (AA-T)
- Math (AS-T)
- Philosophy (AA-T)
- Psychology (AA-T)
- Sociology (AA-T)
- Studio Arts (AA-T)
- Theater Arts (AA-T)

In-Progress Degrees

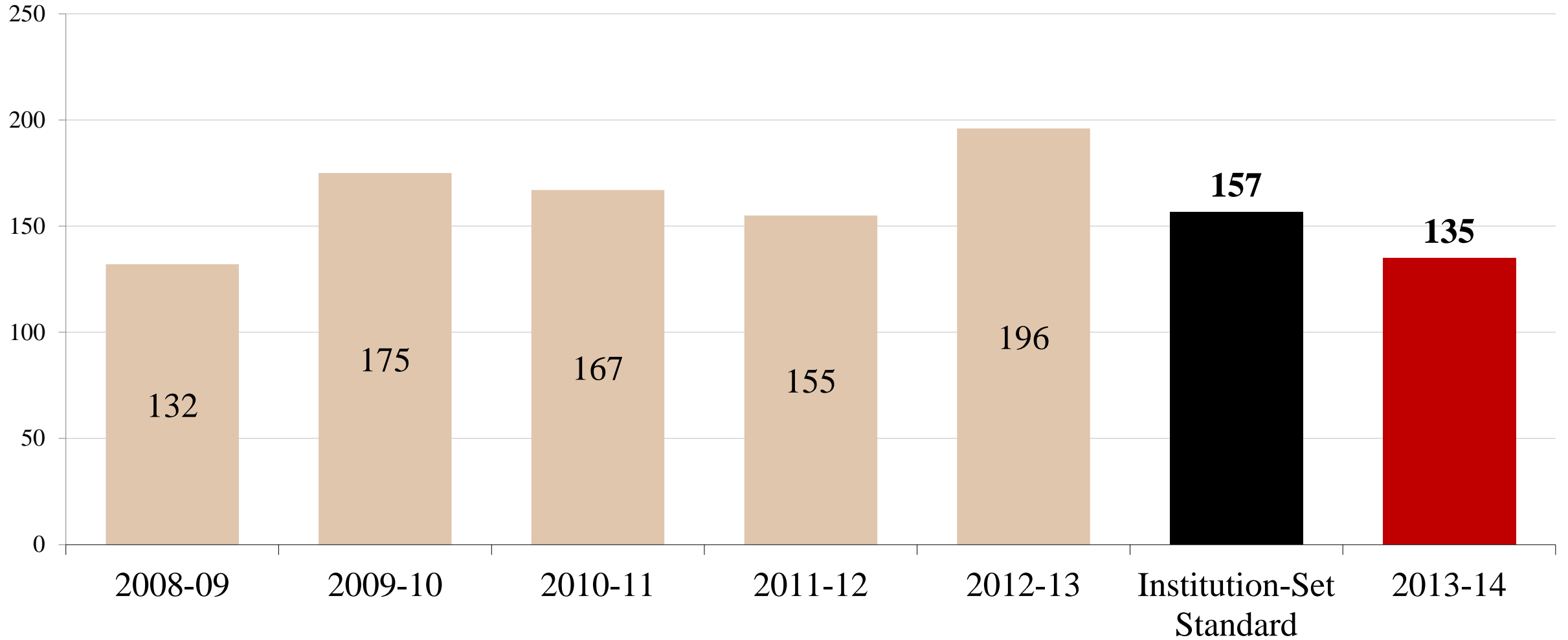
- Biology (AS-T)
- Chemistry (AS-T)
- Comm. Studies (AA-T)
- Comp. Science (AS-T)
- Kinesiology (AA-T)
- Music (AA-T)
- Physics (AS-T)

Institution-Set Standards



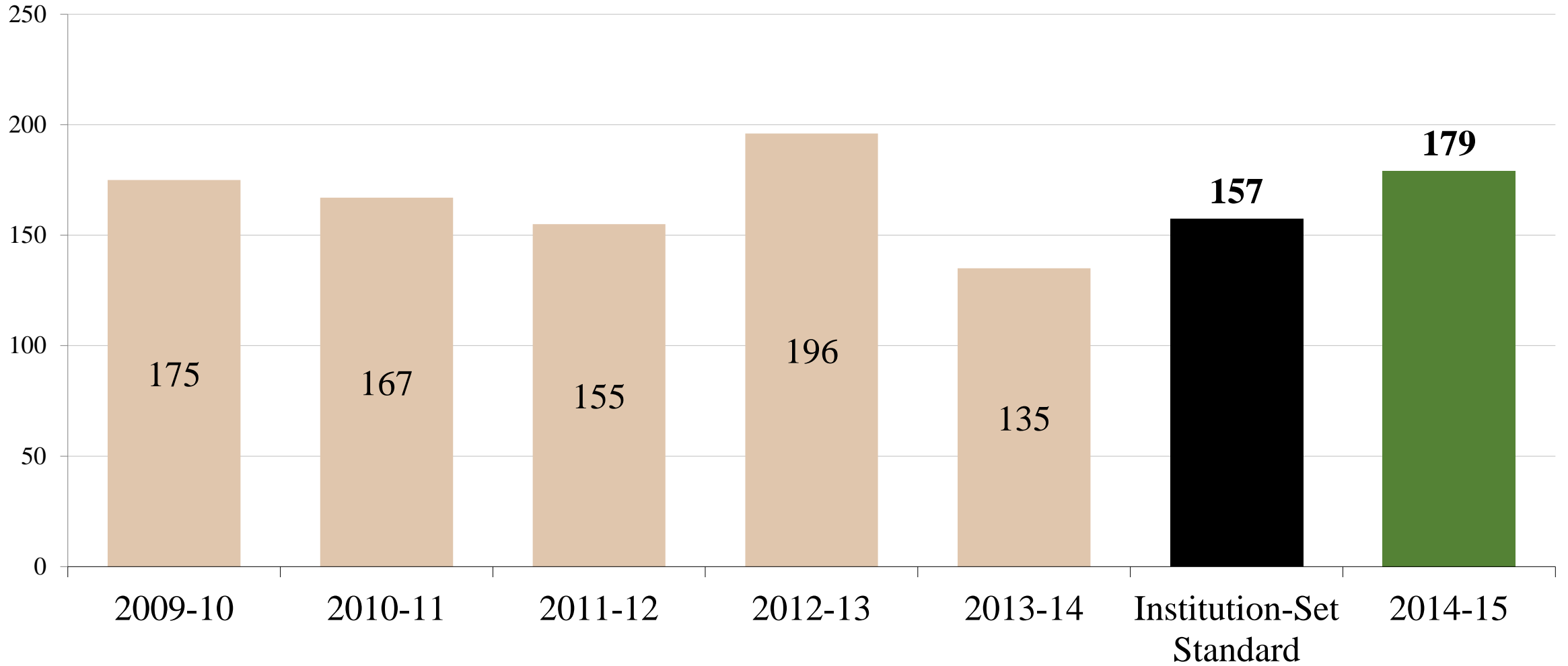
Institution-Set Standard for Number of Certificates Awarded

Assessment Year: AY 2013-14



Institution-Set Standard for Number of Certificates Awarded

Assessment Year: AY 2014-15





LAS POSITAS
COLLEGE

2015-2016 Budget Update





2015-2016 Budget “Big Picture” Statewide

- Total General Fund expenditures = \$115 billion
 - \$7 billion higher than what was approved in 2014 budget
- 2015-16 budget includes a reserve of \$3.4 billion
- Large amounts of one-time funding
- 2015-16 budget provides \$68.4 billion in Prop. 98 funding. Increase of \$7.6 billion from 2014-2015
- Eliminates \$7 billion in debt





2015-2016 Budget “The Good News”

- College FY15-16 Budget Allocation Increase (10%)
- Access Funding Increase (3%)
- COLA Increase (1.02%)
- Categorical Increases:
 - COLA for EOPS, DSPS, and CalWORKs
 - EOPS restoration to pre-recession levels
 - Funding for full-time Faculty
 - Apprenticeship programs
 - Student success and support programs
 - Deferred maintenance funding
 - Instructional equipment funding
 - Innovation funding – \$589,000 (one-time)





2015-2016 Budget “Cautions and Concerns”

- Proposition 30 is *Temporary*
 - Sales tax increase terminates at end of 2016 (approximately 21% of Prop 30 revenues)
 - Income tax increase terminates at end of 2018
- Increasing PERS and STRS Obligations
 - In 2014-15 community college CalSTRS contribution rate increased from 8.25% to 8.88%
 - In 2015-16, the rate will increase to 10.73% and will increase every year until 2020-21 to 19.1%
- Ambitious Enrollment Goals
 - 6,992 (base)
 - 7,062 (growth target)



Non-Instructional Positions

Position	Status
Administrative Assistant II – LPC Foundation	In Recruitment
Instructional Assistant II – English	In Recruitment
Instructional Assistant II – English	In Recruitment
Instructional Systems Technician	In Recruitment
Laboratory Tech II – Biological Sciences/Chemistry	In Recruitment
Student Services Specialist	In Recruitment
Webmaster	In Recruitment

Small Projects Update

Project	Status
Sound proof elevator noise 4130 and sound abatement for 4130/4138	Testing completed, recommendations being evaluated
Biology lab countertops	Contract issued; to be replaced during winter break
Fence and Cameras in ECD Center	Completed
Welding lab outlets	In progress
25 passenger van	Completed
Music practice room security	Completed
Wash and paint building 1800	Completed
Desks and chairs in PE 209 and 212	Completed
Storage shed for theatre tech	In Progress
Ammonia storage cabinet venting	Completed
Removal of plants near pool	Completed
Basic Skills English Center seating upgrade	Completed
Electrical receptacles in 1800 building	Completed

Completed Instructional Equipment Orders

Instructional Equipment	Status
Balances	Complete
Headphones for Math X Lab	Complete
Centrifuges	Complete
Meade Series 4000 Eyepiece & Filter Set	Complete
Celestron 12.5mm CrossAim Reticle Eyepiece	Complete
Telescope Focuser (Cassegrain)	Complete
Telrad Finder sight w/Mounting Base	Complete
Kwik Goal 4mm Soccer Nets	Complete
Water Polo Game Balls	Complete
Water Polo Equipment	Complete
Futsal Balls	Complete
Aeromat Deluxe Medicine Balls	Complete

Completed Instructional Equipment Orders

Instructional Equipment	Status
All-in-one for student use	Complete
Brass Musical Instruments	Complete
Woodwinds Musical Instruments	Complete
Modular System for Educational Instruments Labs	Complete
Electric keyboard w/ amp	Complete
Backline Equipment for 3 Theaters	Complete
2015 update photography equipment	Complete
Tablet & Software for remote lighting control	Complete
Lighting for amphitheater and main stage	Complete
Scripts/texts for library	Complete
CYC LED lighting	Complete
Drapes for main stage	Complete
Spindle Sander	Complete

Completed Instructional Equipment Orders

Instructional Equipment	Status
Quick books accounting software	Complete
Concept2 rower model E x2	Complete
Ice machine	Complete
Precor adaptive motion trainers	Complete
Electrophoresis Gel equipment	Complete
Digital Data Collection Systems & Env. Sensors	Complete
Gauge, Convection & Adapter, Roughing - Labor & Install, Restek Electronic Leak Detector, EMF 10 Mist Filter	Complete
Chemistry student locker locks	Complete
Several Orders—all complete	Complete
Lincoln vortex 360	Complete
Automatic Polarimeter (autoPol I)	Complete

Purchased Instructional Equipment Orders

Instructional Equipment	Status
Vigor 150 Flexible Impeller Pump	Purchased
Steam Generator	Purchased
Crossflow filter	Purchased
Electrophoresis Gel equipment	Purchased

In Process/Pending Instructional Equipment Orders

Instructional Equipment	Status
Water Polo Game Caps	In Process

Construction Updates

Library Renovation



Amphitheater



LAS POSITAS COLLEGE THEATER ARTS DEPARTMENT PRESENTS

A FUNNY THING HAPPENED ON THE WAY TO THE FORUM

BOOK BY BURT SHEVOLVE AND LARRY GELBART
MUSIC AND LYRICS BY STEPHEN SONDHEIM

ORIGINALLY PRODUCED ON BROADWAY BY HAROLD S. PRINCE



JULY 23RD THROUGH JULY 26TH
8:00 PM

DIRECTED BY WESLEY MORGAN
MUSICAL DIRECTION BY MARK DIETRICH
CHOREOGRAPHY BY FAITH BLEVINS

TICKETS
STUDENTS & SENIORS \$10.00
GENERAL ADMISSION \$15.00

TICKETS CAN BE PURCHASED AT:
WWW.LASPOSITASCOLLEGE.EDU/
PERFORMINGARTS/
PRODUCED BY SPECIAL ARRANGEMENTS WITH
BANK THRUWER INTERNATIONAL (SFT)

AT THE BARBARA E. MERES CENTER FOR THE ARTS AMPHITHEATER



LAS POSITAS COLLEGE

New Classroom Building



Opening Fall 2018

New Classroom Building



Portable Buildings



Fletcher Benton Sculpture



Veterans Center



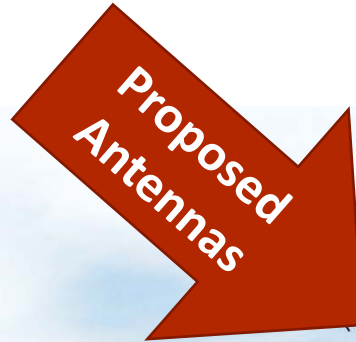
Building 700



Verizon Tower



Existing



Proposed



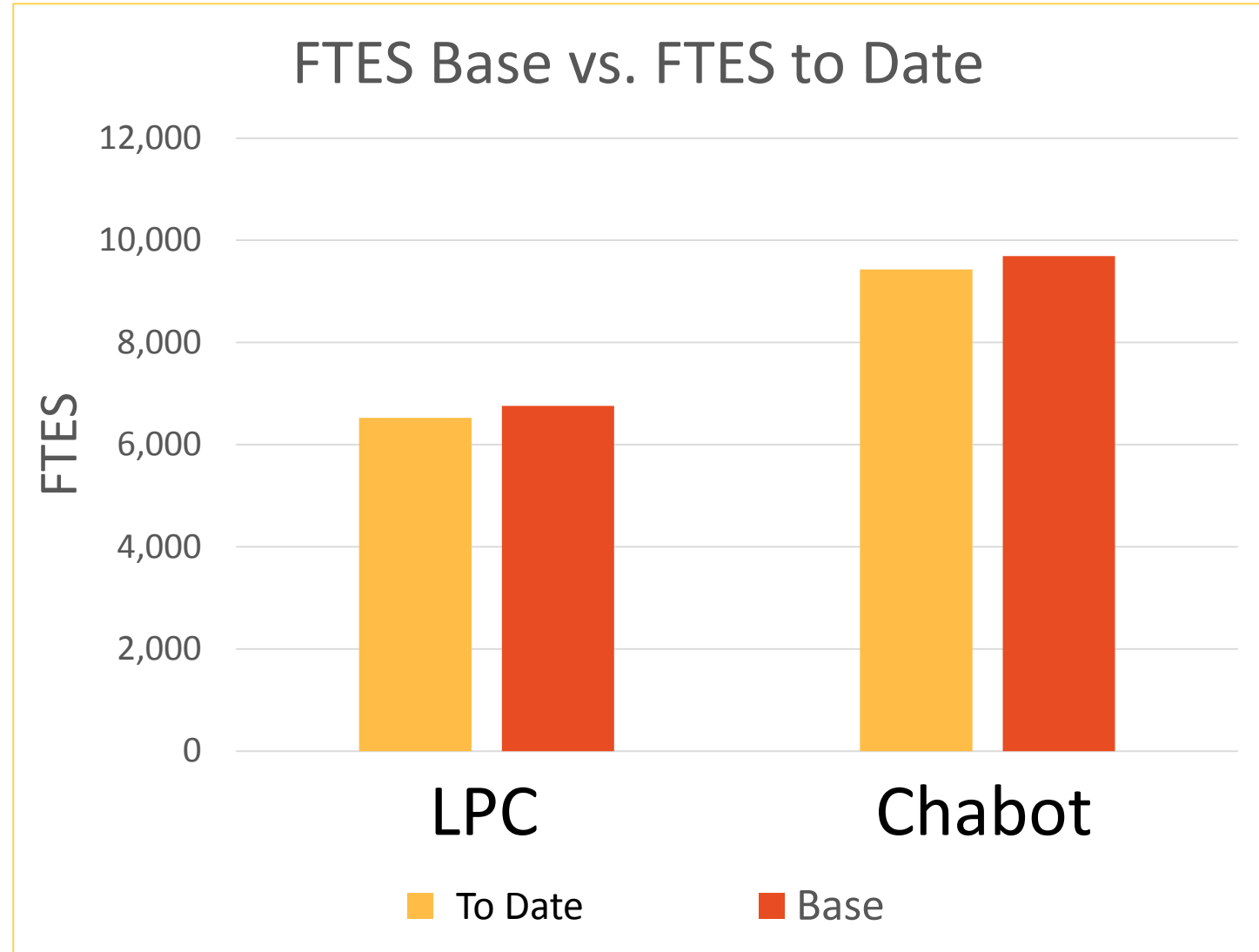
Enrollments

Where we are....Where we need to be

To Make Base

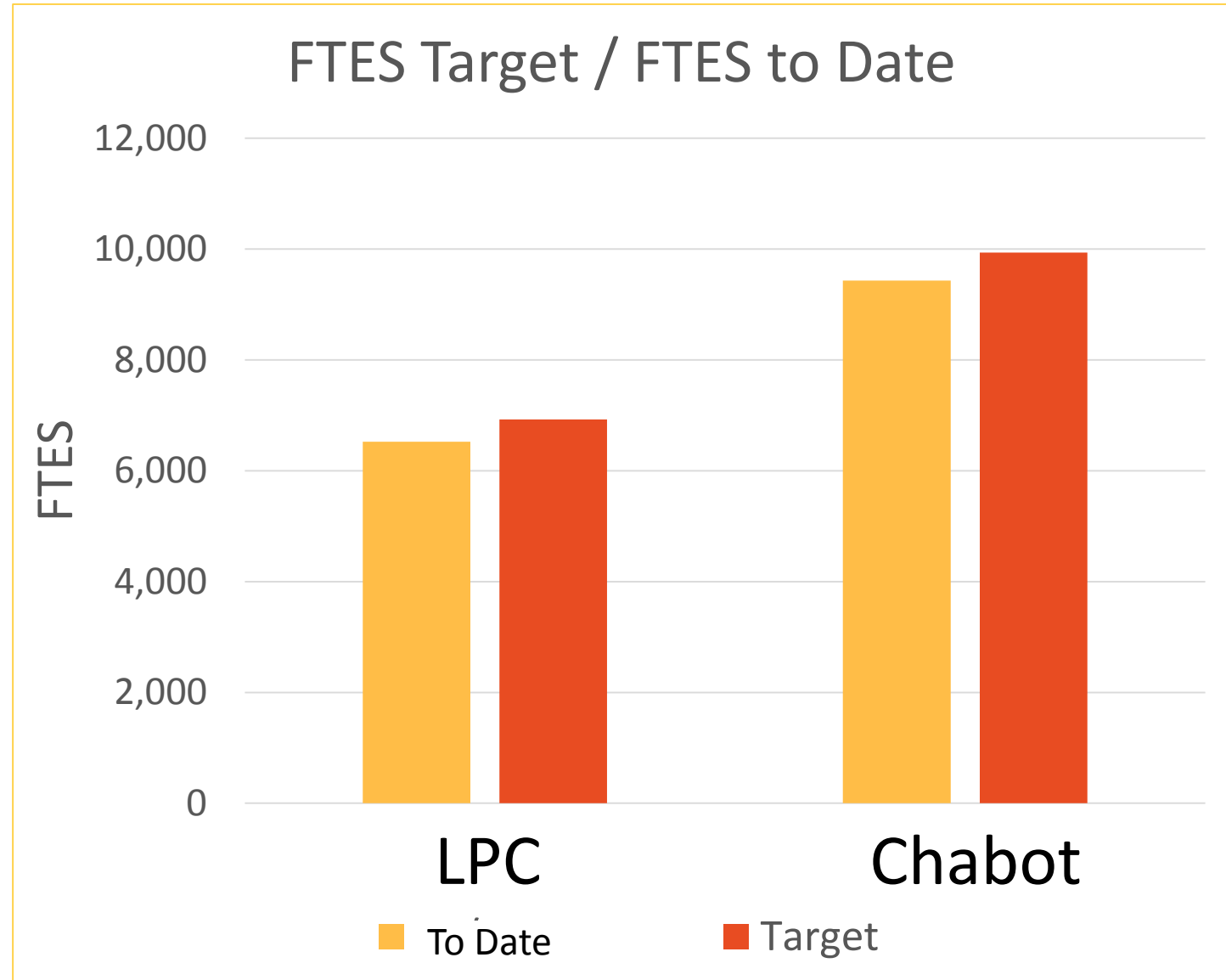
- LPC Annual FTES Base
 - 6,757.7
- Shortfall as of 8/6/15
 - (236)

- Chabot FTES Base
 - 9,692.3
- Shortfall as of 8/12/14
 - (262)



To Make Growth Target

- LPC Annual FTES Growth Target
 - 6,926.6
- Shortfall as of 8/6/15
 - (405)
- Chabot FTES Growth Target
 - 9,934.6
- Shortfall as of 8/6/15
 - (505)



What Can We Do About It?

- Maximize Spring 2016 & Summer 2016
- Potential late start (mid-semester) for Fall
 - Focus on student with less than full load
- Marketing

Las Positas College Fall 2015 Advertising



Learn From the Best and
EXPERIENCE THE POWER OF MORE

#**MORE**CLASSES**MORE**OPPORTUNITY



Fall semester begins August 17th. Financial aid available for those who qualify.
Apply and register now! | www.laspositascollege.edu | (925) 424-1500



Media Plan

- *Livermore Independent* - Print and digital ads
- *Pleasanton Weekly* - Print and digital ads
- KKIQ
- Pandora - audio and digital on all mobile devices
- Facebook - geotarget area includes East Bay and Central Valley - 205/120 and portions of 5/99 corridor
- Stoneridge Mall - Sky Banner
- Comcast Television
- Wheels Buses
- Direct eMail - Students who have stopped out in previous semesters; students who have applied but not registered



Comcast Cable Television

[LPC TV #1](https://vimeo.com/134767102) - <https://vimeo.com/134767102>

[LPC TV #2](https://vimeo.com/134767107) - <https://vimeo.com/134767107>

SyFy

Discovery

Comedy

AMC

FX

ESPN2

TBS

VH1

TLC

Family

ENT

Bravo

USA

MTV

NICK

TOON

CSCA - in Oakland A's games



Stoneridge Mall



More than 1 million mall visitors during time Skybanner was displayed.

Summer Retirements

Geoff Smyth



Retirement Announcements

December 2015

Randy Taylor



DALE & TED KAYE

STAFF INNOVATION GRANT



Basketball State Tournament



March 11 – 13, 2016

Water Polo State Tournament



Fall 2016



President's Lecture Series

Sept. 14-24

Peruvian Art Exhibit in the Art Gallery

Gallery Exhibit open 10 am to 9 pm, weekdays

Artist is available for guest lectures in the classroom or gallery throughout the Exhibition

Oct. 1

Lecture by Gregorio Luke

10 am Lecture on Frida Kahlo

7 pm Lecture on Diego Rivera

Nov. 5

Piano Recital/Lecture by Gustavo Romero

11 am Lecture on Hispanic Influence in Piano Literature

7 pm Recital

6th Annual LLNL-LPC Science and Engineering Seminar Series

Theory to Practice: How Science is Done

Wednesday, September 30, 2015

Thursday, November 5, 2015

Monday, March 7, 2016


Tuesday, April 5, 2016

All seminars:

Located in Room 2420

6:00 – 7:15 p.m.

free and open to the public



**Stay tuned for
seminar speakers**



Fall 2015

Oct. 15, Thurs.

Music: Jazz Concert, 7:00 p.m.

Oct. 16 – Oct. 25

Theater: Jenny Sutter (Black Box)
Fridays & Saturdays, 8:00 p.m.
Sundays, 2:00 p.m.

Nov. 11, Wed.

Veterans Affairs, 10:00 a.m.

Nov. 4, Fri.

Dance Performance, 8:00 p.m.

Nov. 4, Fri.

Music: Student Recital, 1:00 p.m.

Dec. 4 – Dec. 13

Theater: Importance of Being Ernest (Black Box)
Fridays & Saturdays, 8:00 p.m.
Sundays, 2:00 p.m.

Dec. 10, Thurs.

Music: Orchestra Concert, 8:00 p.m.

Dec. 11, Fri.

Speech: Speech & Stories, 7:00 p.m.

Dec. 13, Sun.

Choir Recital, 3:00 p.m.

All performances in the Main Stage Theater, unless noted



Faculty Showcase 2015

Date: September 10, 2015

Location: Main Theater

Time: 7:00 p.m.



LPC Flex Day

Tuesday, September 15, 2015

Flex Day – Tuesday, September 15, 2015

9:00 am

Accreditation Update

10:00 a.m.

**SLOs and Program Review
Core Competencies
Assessment**

Noon

Lunch

1:00 p.m.

**Social Media in the Classroom
Online Education Initiative
Acceleration in Math & English
Dealing with Difficult People**

DRAFT

College Day Schedule

Time	Discussion/Presentation	Presenter/s	Location
9:00 a.m. - 11:30 a.m.	Welcome	President Russell	2420
	Break Out Sessions		
	<ul style="list-style-type: none"> Advisory Committees 	Vicki Shipman	2460
	<ul style="list-style-type: none"> Campus Learning Resources 	VP Rodriguez	2470
	<ul style="list-style-type: none"> Program Review & SLOs 	Karin Spirn & John Ruys	502
	<ul style="list-style-type: none"> Educational Master Plan 	Rajinder Samra	2490
11:45 a.m. – 1:00 p.m.	Complimentary Lunch		1620 (Cafeteria)
1:00 p.m. – 2:30 p.m.	Division Meetings	ALSS	4130
		BSBA	2306
		STEMPS	2206
		Student Services	1602
2:30 p.m. – 3:30 p.m.	Department Meetings	Faculty	Regular Meeting Rooms

**Have a
GREAT
semester!**

