

Las Positas College



ESL Student Handbook

Acknowledgements

Visual Communications Dept. 2016

InDesign Layout and Logo Design

Jeanette Robsahm

Illustrations

Paul Hellwig: Chapter One and Seven

Greg Duggan: Chapter Two and Three

Karen Vigallon: Chapter Four

John Chiarello: Chapter Five and Six



Hello ESL Student,

Welcome to Las Positas College! We are very happy that you chose to attend ESL classes at Las Positas, and we are looking forward to helping you reach your goals.

Starting college courses is very exciting, but it can be difficult and confusing, too. We have prepared this handbook for you, and we hope that it gives you the information you need to be successful!

If you don't find the information you are looking for here, ask your instructor. He or she can help you.

We are looking forward to getting to know you, and we are sure that you will enjoy studying ESL at Las Positas!

Your ESL Instructors

Table of Contents

Chapter 1: Application and Registration Information

Application and Registration for New Students.....	2
Online Orientation	
Assessment	
ESL Group Orientation (in person)	
Continuing Student Registration.....	3
Frequently Asked Questions.....	3-4
Late Registration and Full Classes	
Appointments with Counselors	
Financial Aid	
Other LPC Programs, Degrees, and Certificates	
Foreign Degrees and Transcripts	
Other (non-ESL) Courses to take	

Chapter 2: The ESL Program..... 7-9

ESL Program Description	
ESL Courses with Lab	
ESL Students	

Chapter 3: What You Should Know about College Courses..11-12 (Classroom Expectations)

The First Week of Classes	
Attendance	
Participation	
Homework	

Chapter 4: Study Suggestions for ESL Courses.....13-15

Homework	
Instructor's Office Hours	
Internet Resources	
Public Libraries	

Chapter 5: Technology	17-20
ClassWeb	
Zonemwail	
Blackboard	
iQonline	
Microsoft Office (It's Free!)	
Problems with Technology	
Chapter 6: Campus Resources.....	21-24
Bookstore	
Library	
Tutoring	
The Reading and Writing Center	
Computer Labs	
Printing on Campus	
Health Center	
Campus Safety	
Disability Resource Center (DSPS)	
Childcare Center	
Career and Employment Center (Tri-Valley One Stop)	
Student ID Card	
Associated Students of Las Positas College (ASLPC)	
Chapter 7: Transportation	25-26
Bike Parking	
Public Transit	
Parking Information	
Appendix.....	27-30
Community Health Services	
Hotline/Crisis numbers	
Student's "My Weekly Schedule"	
Campus Map	

Chapter One

Application and Registration



APPLICATION AND REGISTRATION

You can find information about the Application and Registration process at the Las Positas website

(www.laspositascollege.edu).

Click the link that says "Getting Started."

It can be difficult to complete all of these steps by yourself. If you have trouble, it is much easier to go to the Admissions and Records office in Building 1600.



Application and Registration Steps for New Students

1. Fill out an application. You can do this online or you can get a paper application at Admissions and Records.
2. Get your "W" number. Your "W" number is your student number
 - After you fill out the application, in about 24 hours, you will get an email with your student number (it is called your "W" number).
 - You can also check your "W" number at Admissions and Records.
3. Complete the Online Orientation. This is a short activity on the internet. It will explain many services at Las Positas.
4. Take the ESL Assessment. This is the test that we will use to find the correct level class for you.
 - The assessment is only offered on certain days and times. The schedule is on the LPC Assessment Center website (www.laspositascollege.edu/assessmentcenter/scheduleinfo.php).
 - You can make an appointment, but you do not have to.
 - There is a separate assessment for native speakers. Be sure to take the ESL Assessment.
 - The website provides a study guide to help you study.
 - Please try to do your best on the assessment!
5. Attend ESL Group Orientation
 - After you take the assessment the staff in the Assessment Center will schedule you to attend a Group Orientation for ESL students.
 - At the Orientation, you will learn about the results of your assessment and a counselor will help you register.
 - If you cannot attend your scheduled ESL Group Orientation, call the Assessment Center **(925-424-1475)**. Ask them to re-schedule your Orientation.
 - If you cannot attend any ESL Group Orientation, make an appointment to visit the ESL Counselor. Her name is Gabriela Discua, (See "How do I visit a counselor?" in this handbook on **page 4**).
6. Apply for financial aid in Building 1600. Las Positas offers many programs to help students pay for their classes, fees, and books.
7. Pay your fees, get your parking permit, and buy your books.
8. Welcome to Las Positas!

Registration for Continuing Students

(www.laspositascollege.edu/admissions/continuing_students.php)

- If you are already a student at Las Positas, registration for the Spring Semester begins in December. Registration for the Summer and Fall Semester begins in April.
- The college will email you a Registration Appointment Notice. It will include your "Priority Registration" date.
- You can register on that date or any time after that date.
- You cannot register before that date.
- You can also find your Priority Registration date on ClassWeb.
- You can register by yourself in person or online, or you can meet with a counselor. We recommend that you meet a counselor.

To Register in Person

1. Decide which classes you want to take (ESL Program Description on **page 8-9**)
2. Check the Class Schedule to see when your courses are offered.
 - You can buy a printed Class Schedule in the bookstore.
 - You can get a free printed Class Schedule in the ASLPC office (1643).
 - You can view the Class Schedule online. Look for the "Class Schedule" link on the LPC Homepage.
3. Visit the Admissions and Records office and tell them the courses you would like to add.

Frequently Asked Questions

(www.laspositascollege.edu/admissions/faqs.php)

How much do classes cost?

- If you have lived in California for one year, classes cost \$46.00 per unit.
- If you are an International Student or have lived in California for less than one year, classes cost \$289.00 per unit.
- One unit equals approximately one hour of class per week.
- ESL classes are 2 Units (Oral Communication and Pronunciation), 3 Units (Grammar), or 6 Units (Reading and Writing).

How do I show my residency in California?

- You can use many different items to show that you have lived in California for one year.
- Bring any of the following to Admissions and Records: Utility bills, bank statements, lease, insurance cards, voter registration card, etc.

What if I register late or if the class I want to add is full?

- If you try to register for a class and it is full, you will be added to a waitlist.
- Even if the class is full, you should go to the class. Please bring some proof of your Eligibility (copy of transcript or assessment results) to the class.
- If there is space in the class, the teacher will give you a special number (Add Authorization Number). You can use this number to add the class.

How do I visit a counselor?

(www.laspositascollege.edu/counseling/dropin_appointments.php)

- Counselors can recommend courses, explain programs to you, and help you make a Student Education Plan.
- You can visit a counselor during "Drop In" times for very quick question, but it is much better to make an appointment.
- Gabriela Discua is a special counselor for ESL students. Ask to meet her.
- To make an appointment, visit area 1616D in Building 1600 or call 925-424-1400.

How do I apply for Financial Aid?

- To apply for Financial Aid, visit the Financial Aid office in room 1650 (second floor of The Student Services Building, 1600)

How do I learn about college courses, degrees, and programs?

Las Positas offers many different courses, degrees and programs.

- The College Catalog has all of this information.
 - * You can purchase a College Catalog in the bookstore.
 - * You can download a College Catalog from the Admissions and Records website.
- If you are not sure what you want to study, Psychology-Counseling 10 , "Career and Education Planning" is a course that will help you choose a career.
- Counselors can also tell you about different programs on campus. Ask your counselor.

What if I have a degree from another country?

- If you want to pursue a degree here and have a degree from another country, you can have your transcripts translated and evaluated. You do not have to do this to attend LPC.
- For more information, visit the International Students website. It has links to companies that will translate and evaluate foreign transcripts:
(www.laspositascollege.edu/international/links.php)

Can I take other (non-ESL) classes?

We know that all of you are working very hard to improve your English, and we want very much for you to succeed in your ESL classes and in other classes you will take to achieve your educational goals. In order to succeed in these other classes, it is very important to take only classes that you are ready for. If you take classes that are too difficult you will become frustrated, feel disappointed, and eventually, fail. After years of speaking with students and instructors of these courses, we recommend the following courses to students at the following levels in the ESL program.

Even in these courses, it will take you much longer to complete the required work than it will take native speakers. For this reason, we recommend that you do not take more than three units of transfer level work per semester until you are eligible for ESL 25.

ESL 25 (and 23 or 26)

ANTH 3	Social/ Cultural Anthropology
ANTH 5	Cultures of the U.S.
ART 2A	Introduction to Drawing
BUSN 30	Business Ethics and Society
CIS 8	Essential Computing skills
CIS 71	Computer Typing
ECD 50	ECD Principles and Practices
GEOG 1	Intro to Physical Geography
GEOG 2	Cultural Geography
GEOL 1	Physical Geology
HLTH 1	Introduction to Health
HIST 22	U.S. Women's History
HUMN 10	The American Style
INTD 50	Residential Space Planning
INTD 52	History of Interiors/Furnishings
MUS 4	Jazz in American Culture
MUS 6	Basic Music Skills
MUS 20	Elementary Guitar
MUS 21A	Elementary Piano
PHTO 50	Introduction to Photography
PSCN 10	Career and Education Planning
PSCN 15	College Study Skills
PSCN 30	College Success/Experience
RELS 1	Religions of the World
SPCH 1	Fundamentals of Speech Communication
SPCH 11	Intercultural Communication
WMST 1	Introduction to Women's Studies
VCOM 48	Intro to Design Studio
VCOM 50	Visual Communications/Process of Design
VCOM 51	Color for Design
VCOM 52	Introduction to Typography

ESL 24 (and 23 or 26)

ART 2A	Introduction to Drawing
CIS 8	Essential Computing skills
CIS 71	Computer Typing
ECD 50	ECD Principles and Practices
HLTH 1	Introduction to Health
INTD 50	Residential Space Planning
INTD52	History of interiors/furnishings
MUS 4	Jazz in American Culture
MUS 6	Basic Music Skills
MUS 20	Elementary Guitar
MUS 21A	Elementary Piano
PHTO 50	Introduction to Photography
PSCN 10	Career and Education Planning
PSCN 15	College Study Skills
PSCN 30	College Success/Experience
SPCH 11	Intercultural Communication
VCOM 48	Intro to Design Studio
VCOM 50	Visual Communications/Process of Design
VCOM 51	Color for Design
VCOM 52	Introduction to Typography

ESL 121B & 120B

ART 2A	Introduction to Drawing
CIS 8	Essential Computing skills
CIS 71	Computer Typing
INTD 50	Residential Space Planing
MUS 4	Jazz in American Culture
MUS 6	Basic Music Skills
MUS 20	Elementary Guitar
MUS 21A	Elementary Piano
PHTO 50	Introduction to Photography
PSCN 10	Career and Education Planning
PSCN 15	College Study Skills
PSCN 30	College Success/Experience
VCOM 48	Intro to Design Studio
VCOM 50	Visual Comm/Process of Design
VCOM 51	Color for Design
VCOM 52	Introduction to Typography

Chapter Two



THE ESL PROGRAM

The ESL Program is organized into 3 levels: Beginning (Level 1), Intermediate (Level 2), Advanced (Level 3). Each level includes two semesters, for a total of six semesters of classes. Required Courses are in bold; other courses are optional.

Level 1A:	ESL 130A	Beginning Grammar	3 units
	ESL 131A	Beginning Reading & Writing	6 units
	ESL 133	Beginning Oral Communication	2 units
	ESL 136	Pronunciation and Fluency	2 units
Level 1B:	ESL 130B	High-Beginning Grammar	3 units
	ESL 131B	High-Beginning Reading & Writing	6 units
	ESL 133	Beginning Oral Communication	2 units
	ESL 136	Pronunciation and Fluency	2 units
Level 2A:	ESL 120A	Low-Intermediate Grammar	3 units
	ESL 121A	Low-Intermediate Reading & Writing	6 units
	ESL 123	Intermediate Oral Communication	2 Units
	ESL 126	Pronunciation of English	2 Units
Level 2B:	ESL 120B*	Intermediate Grammar	3 units
	ESL 121B*	Intermediate Reading & Writing	6 units
	ESL 123	Intermediate Oral Communication	2 Units
	ESL 126	Pronunciation of English	2 Units
Level 3A:	ESL 24	Low-Advanced Reading & Writing	6 units
	ESL 23	College Grammar (Grammar for Reading)	3 unit
	ESL 26	Advanced Editing (Grammar for Writing)	3 units
Level 3B:	ESL 25	Advanced Reading & Writing	6 units
	ESL 23	College Grammar (Grammar for Reading)	3 units
	ESL 26	Advanced Editing (Grammar for Writing)	3 units

Notes:

- Not every course is offered every semester.
- ESL 133/136 can be taken in any order.
- ESL 123/126 can be taken in any order.
- ESL 23/26 can be taken in any order (but many students prefer to take 23 before 26).
- You must complete both ESL 121B and 120B to move to any Advanced (Level 3) courses.
- All Advanced classes earn transfer credits (up to 10 units) to CSU/UC.
- You will improve and progress through the program faster if you can take the Reading/Writing and Grammar courses together in the same semester.
- It is also okay to take just one course per semester, but it will take you longer to reach your goals.
- If you take only one class, the Reading/Writing class will help you improve most quickly.
- If you are doing very well (all As) in your classes and feel that you can move through the program more quickly (skip a class), talk to your instructor. We can use a Prerequisite Challenge to help you reach your goals faster.

ESL Courses with Lab

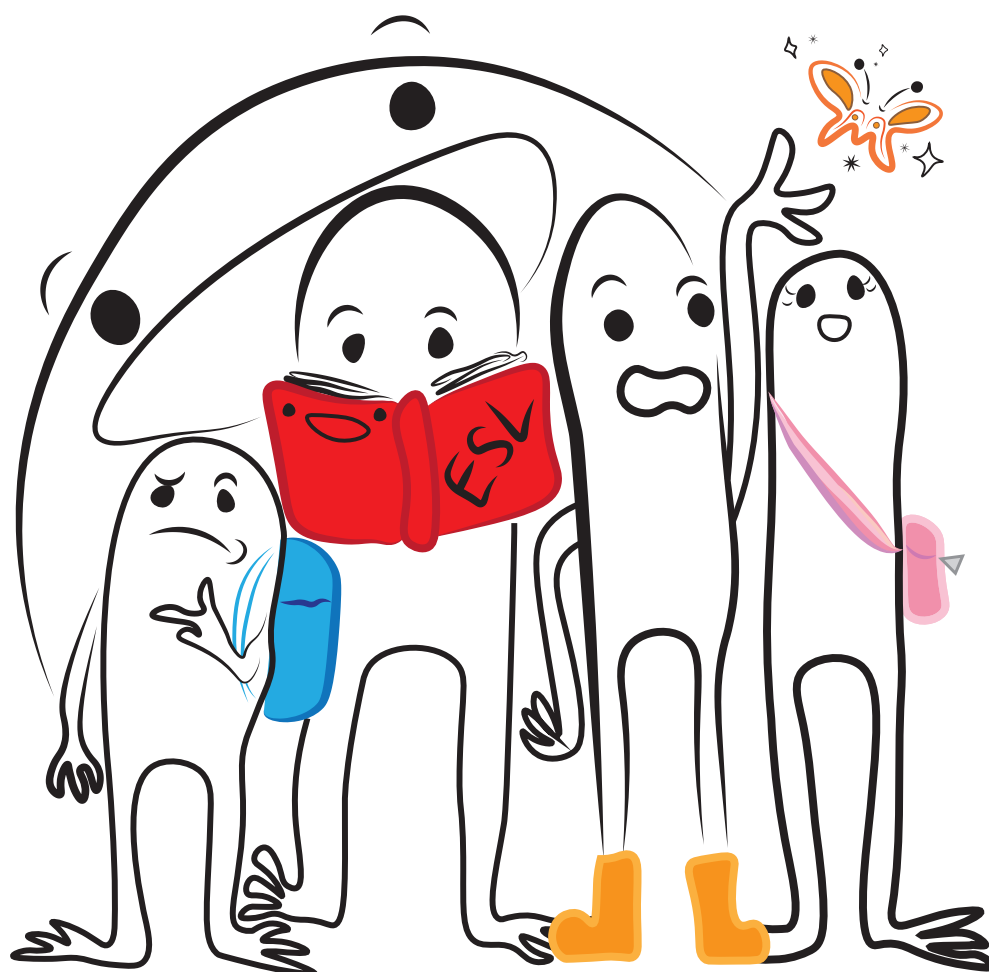
- All Reading/Writing and Oral Communication/Pronunciation courses include a required Lab.
- The lab meets for 50 minutes each week (at the same time each week for the entire semester) with your classmates and your instructor.
- The lab gives you an opportunity to practice skills from the class with your classmates.
- When you register, make sure that you can attend the lab
If you cannot attend the lab part of a class, do not register for that class.

ESL Students

- ESL students at Las Positas come from all parts of the world.
- Most classes have speakers of about 10 different languages.
- Because English is the language that everyone shares, you have a great chance to practice English with people from other countries.
- We have students of all ages, from 18 to 80.
- Students have many different goals. Some want to transfer to a 4-year university; some want to get an AA degree; some are here to improve their English for their jobs; some want to study to be able to help their children in school. There is no "right" reason to study ESL!

Chapter Three

What You Should Know About College Courses (Classroom Expectations)



WHAT YOU SHOULD KNOW ABOUT COLLEGE COURSES

The First Week of Classes

- The first week of classes can be very difficult, confusing, and stressful...but it's also very exciting! You will have fun and be successful if you prepare.
- Check the class schedule to make sure you know when your first class meets. Depending on the schedule that semester, the first class meeting might be the Lab.
- Find your classroom. **(See the map on page 30)**. The first numbers of the classroom tell you which building the room is in. For example, room 403 is in building 400, and room 2450 is in building 2400.
- Buy your books before the first class. It's easiest to buy your books from the Las Positas Bookstore because they know exactly which books you need. You can also buy your books online. We do not recommend buying used books because someone may have put the answers in them, and their answers might be wrong! If you do not have your books the first week, you can go to the library. We have books on reserve, and you can make copies of the parts you need.
- Arrive early for the first class meeting. You want to have time to find the room and get relaxed.

Class Attendance

- You have to be in class to learn. For this reason, class attendance is required.
- It is also important that you attend the entire class.
- Do not register for a class if you know that you will be late often or if you know that you will miss many days of your class.

Participation

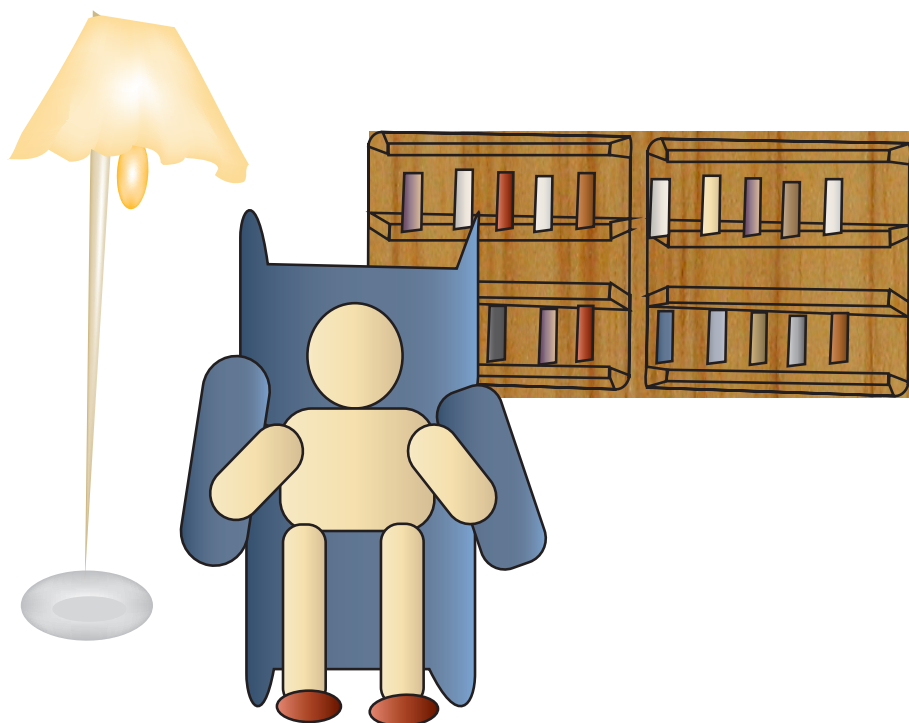
- In some countries, students do not participate very actively in class. They just listen and memorize what the teacher says.
- We think this is boring. It is also not a good way to learn a language.
- It is important to participate in class. If you are in a group, talk with your group members and share your ideas.
- If you do not understand something, ask your teacher.
If your teacher asks a question, try to answer it.
- It is okay to make mistakes, and you will learn more if you participate more!

Homework

- Just like participation, homework is required. Learning English requires lots of practice!
- You should plan to do 2 hours of homework per week for each unit (each hour of class).
 - *For a Reading/Writing class (6 units),
you will have 12 hour of homework each week.
 - *For a Grammar class (3 units), you will have 6 hours of homework each week.
- Don't wait to do your homework. Do some homework every day!

Chapter Four

Study Suggestions for ESL Courses



STUDY SUGGESTIONS FOR ESL COURSES

Homework

You should plan to do 2 hours of homework per week for each hour of class.

Here are some good ways to reach your goals:

Make a study schedule!

- We know it can be difficult to find time to study. If you make a schedule and study at the same times every week, you will be more successful.
- You can use the schedule on **page 29** to make your plan.

Find a Good Place to Study!

- You need to find a good, quiet place to study.
- You should not study while you are watching TV or playing with your children.
- Many people are very busy at home and cannot find time to study.
It might be better to study at Las Positas. The library is a great place to study. You can even reserve a private room there.

Read as much as you can!

- Even if you are not taking a Reading/Writing class, reading often is the best way to improve your English.
- Ask your teacher for recommendations.
- The "PZ7" section of the LPC Library has easier books especially for ESL students.
- You can also ask librarians at public libraries.

Make a Study Group!

- Making a study group is a great way to study.
You can make friends and learn from your classmates!
- Your study group can meet in the ILC (600).
- You can also reserve a private study room in the library (see the Library section of this handbook on **page 22**).

Internet Resources

The Internet has many great websites to help you with your English.

The Las Positas ESL website has links to these:

- **Go to (www.laspositascollege.edu/esl).**
- Click on Links.
- You will find many useful websites here.
- English Page and ELC Study Zone are very good for grammar!

Instructor's Office Hours

- Office Hours are a chance for you to meet with your instructor one-on-one.
- They are not required, but they can be very helpful!
- Most instructors have at least one Office Hour per week. Some instructors have five Office Hours. Your instructor's schedule should be on the course syllabus.
- Office Hours are often busy, so it's best to contact your instructor to make an appointment.
You can ask your instructor during class, or you can send him/her an email.
- To make your Office Hour visit useful, think about your questions before you go. Your questions might be things like:

"I don't understand Present Progressive Tense very well.
Can you explain it to me again?"

"Can we review the grammar errors in my last writing assignment?"

"I didn't understand this activity in our book.
Can you go over it with me?"

"I was confused when I read the chapter in our book.
Can you review with me?"

- You can visit your instructor in Office Hours as often as you want.

Public Libraries

While you are studying at LPC, you can also get help in your community. Public Libraries in the area can be very helpful. Many of them have ESL classes and tutors.

Dublin Public Library
200 Civic Plaza
Dublin, CA 94568
925-803-7252

Livermore Public Library
1188 S. Livermore Ave
Livermore, CA 94550
925-373-5500

Pleasanton Library
400 Old Bernal Ave
Pleasanton, CA 94566
925-931-3400

Tracy Branch Library
200 E. Eaton Ave
Tracy, CA 95376
866-805-7323

Chapter Five

Technology



TECHNOLOGY

All LPC ESL classes use technology. In addition, you will need to access important college information online. It is very important that you know how to use the resources below:

ClassWeb

Class Web is an important website for students. In Class Web, you can:

- Register for, add/drop or withdraw from classes.
- Pay fees online.
- Buy a Parking Permit.
- Check your Financial Aid .
- Check your grades.
- Log-in: You need a username and password to log in to Class Web.
Your username is your W number. Your password is your birthday (MM/DD/YY).
For example, if your birthday is January 20, 1970, your password is: 012070
- ClassWeb website: (**www.banner-web.clpccd.cc.ca.us:700/**)
- For step by step tutorial:
(**www.laspositascollege.edu/admissions/instructions.php**)

Zonemail

Zonemail is your student email account. Every LPC student has a Zonemail account. ALL important college information is sent to your zonemail Account (registration dates, financial aid, etc.) It is important that you check your Zonemail account regularly or forward your student emails to your personal email.

- You can find out your email address by logging in to Class-web and selecting:
What is my email address?
- **ZoneMail:** (**myportal.clpccd.cc.ca.us/cp/home/displaylogin**)
- Find step by step instructions:
(**www.laspositascollege.edu/ZoneInfo/index.php**)

It is important for you to check your Zonemail account regularly or to forward your Zonemail emails to your personal email account. To forward your college emails to another account, log into The Zone, and click the Email icon. Enter your Gmail username and password.

To set up automatic forwarding of emails:

1. Click on Settings
2. Forwarding and POP/IMAP,
3. Select the radio button in front of "Forward a copy of incoming mail to."
4. Enter an email address in the adjacent text box.
5. Save Changes at the bottom.

Blackboard

Each ESL class has a class website called Blackboard. Use Blackboard to:

- Check class homework.
- Check grades.
- Email your instructor and classmates.
- Get important announcements from your teacher.
- Website: (www.clpccd.blackboard.com/)

Your teacher will often send emails to you through Blackboard. Normally, these emails go to your Zonemail account. To make sure that you receive these emails, you can do one of three things:

- Check your Zonemail account often.
- If you don't check Zonemail often, you can forward messages to your personal email. See instructions on **page 18**.
- Change your email address for Blackboard so that messages sent through Blackboard will go to your personal email. To do this, you will have to go to Classweb, which is the same place you go to register for classes:
 1. First, sign on to ClassWeb. If you haven't used ClassWeb before, the page has directions for creating a password--click on "What is my user id/pin?"
 2. After logging in to ClassWeb, click on "What is my email address?"
 3. Then, click on "Update Email Addresses"
 4. If you already have an email address under "Email for Blackboard" and it is an email that you use often, just click "Submit" at the bottom.
 5. If you have an email address under "Email for Blackboard" but it is an email that you don't use often, click on the email address. Then enter the address of an email that you use often and click "Submit."
 6. If no address appears under "Email for Blackboard," click on "Type of email to insert" and choose "Email for Blackboard" Then enter the new email address and click "Submit".

iQonline

All ESL Reading/Writing classes (except ESL 25) use iQonline with the "Q Skills" textbook. The assignments on iQonline are required. You can buy an iQonline access card in the college bookstore. On iQonline you can practice vocabulary, grammar and reading/writing skills, and watch videos connected to the Q units you study in class. To register for iQonline, follow the directions on your iQonline access card and ask your teacher for a class code. Be careful! Select the correct book for your class.

- You can access your iQonline account for one year after you register.
- You do not need to create a new account every semester. You can use the same account and just add a new book to your account.
- (www.iqonlinepractice.com/auth/index)

Free Microsoft Office software!

- Office 365 Suite includes Word, PowerPoint, Excel, and OneNote.
- It includes 1TB of OneDrive storage.
- You will need to use your student email to register.
- Microsoft Office 365 is available to you as long as you are a student at LPC.
- Use this link to sign up:
(www.products.office.com/en-us/student/office-in-education)

Problems with Technology

Having problems with Blackboard? Can't open your student email?

Go to the computer lab in room 803. A friendly staff member can answer any questions you have about technology required in your class.

(www.laspositascollege.edu/computercenter/LocationHours.php)

Chapter Six

Campus Resources



Bookstore

(www.bkstr.com/webapp/wcs/stores/servlet/StoreCatalogDisplay?catalogId=10001&langId=1&demokey=d&storeId=10499)

The campus bookstore is located in building 1300. The bookstore is closed on Saturdays and Sundays, and hours change, so please check the website for current hours.

- Buy class textbooks, test and classroom supplies.
- Buy snacks and LPC clothing.

Library

(www.laspositascollege.edu/library/index.php)

The library is located in building 2000 and is open Monday-Friday. The library is available for all students. Friendly librarians can help you find books and answer other research questions.

- Use computers and databases for research.
- Check out books including class textbooks.
- Ask librarians for help.
- Buy a print card and print documents (\$.10/page).
- Meet a study group in a private study room. Study rooms are available to students for two hours/day. Reserve a private study room online. You will need your student ID card to get a key to your study room.
- Find instructions on the library website:
(www.laspositascollege.libcal.com/booking/library_building2000)

Tutoring

(www.laspositascollege.edu/tutorialcenter/)

Tutoring at LPC is free! The tutorial center is open Monday-Friday. There are trained ESL tutors ready to help you at no cost! The tutorial Center is located in room 2401. You can sign up for a tutor and meet your tutor each week at the same time.

- You can use the tutorial center's 'drop-in' hours to meet with a tutor for 20 minutes at a time of your choice.

The Reading and Writing Center

(www.laspositascollege.edu/RAW)

English and ESL instructors provide reading and writing help in the RAW Center. The RAW Center is inside the Tutorial Center (2401). Check the website for hours.

- Face-to-Face and online tutoring
- Workshops
- Online reading and writing resources, and lessons are available.

Computer Labs

(www.laspositascollege.edu/computercenter/LocationHours.php)

The Computer Lab is in room 803 and has friendly and helpful staff ready to help you with your computer needs and questions. Computers are also available in the library (2000) and the Integrated Learning Center (600).

Printing on Campus

(www.laspositascollege.edu/computercenter/Printing.php)

Printing from campus computers requires a Print Fee Card. Buy a Print Fee card from the Bookstore (discounted) or from the card dispensers in the Library or Computer Center (not discounted).

- A print card costs .50 ¢.
- Printing costs .10 ¢ for each page.
- You must buy a new card if your card is lost or stolen, so please treat your Print Fee Card like cash.

Health Center

(www.laspositascollege.edu/healthcenter/)

The Student Health Center offers a variety of health and wellness services. The Health Center is located in building 1700 and is closed on Fridays.

- See a doctor if you are sick.
- Receive mental health counseling.
(See **page 28** for a list of community health services.)
- Vaccinations and prescriptions are available.
- Services at the health center are included in your student fees.
- You will need to pay for other services like prescriptions at a discounted student rate.

Campus Safety

(www.laspositascollege.edu/safety/)

Campus Safety is located next to the Health Center in room 1725. Security staff are on campus 24 hours/day.

- Get help from parking services or argue against your parking ticket.
- Report a crime.
- Get a Campus Safety Officer to walk you to and from your class (especially if you are afraid at night.)
- Look for lost items in the lost and found.
- Campus safety will also assist with other general problems, like jump start your car.

Disability Resource Center (DSPS)

(www.laspositascollege.edu/DSPS/)

The Disability Resource Center located in room 1615, can help arrange special accommodations for students with disabilities.

- If you have a disability or think you have a disability, visit the DRC.

Childcare Center

(www.laspositascollege.edu/childdevelopmentcenter/)

LPC has a Childhood Development Center, which is open five days a week, from **7:30-5:30**. Students can get care for their children during class time.

- Students can enroll their children for the whole semester and pay per month.
- Scholarship are available for full-time students which cover the costs of child care.

Career and Employment Center (Tri-Valley One Stop)

(www.laspositascollege.edu/employmentcenter/index.php)

The Career and Employment Center can help you find a job! Please call or visit the Tri Valley One Stop for job help. It's free!

- The Career and Employment Center at LPC is open on Wednesdays from 2-5 in room 1604C.
- There is also a main office in Dublin.
- Call for more information: **(925) 424-1826**

Student ID Card

(www.laspositascollege.edu/admissions/id_cards.php)

You need a student ID card for the LPC library, computer lab and other student services. Your first card is free!

- Go to Admissions and Records (room 1670) to get an ID card.
- It is \$2 to replace a lost or stolen ID card.
- Check the website for days and times.
- There is an added bonus--your student ID card can sometimes lead to discounts at restaurants, movies, etc. You should always ask!

Associated Students of Las Positas College (ASLPC)

The Associated Students of Las Positas College is your student government.

- You can get free Scantrons and Greenbooks at ASLPC in room 1643.

Chapter Seven

Transportation



Bike Parking

- There is outdoor bike parking around campus. Please bring a lock.

Public Transit

- Las Positas College is accessible by public transportation.

BART

- The closest BART (Bay Area Rapid Transit) train station is the Dublin/Pleasanton Bart stop.
- Check the website for times.
- **www.bart.gov**

WHEELS BUS

- WHEELS is the bus system for the cities of Dublin, Livermore and Pleasanton.
- Check the website for times.
- **www.wheelsbus.com**

TRACY TRANSIT STATION

- For service from Tracy, check the schedule from the Tracy Transit Station.
- **www.transitunlimited.org/Tracy_Transit_Station**

Parking

- You MUST have a Parking Permit to park at LPC.
- Daily Permits are available at the ticket machines for \$2, located in most student parking lots.
- You can also purchase a Parking Permit for the entire semester (this is usually cheaper). Semester Parking Permits are available online only.
Sign into: ClassWeb and select "Order or Activate a Parking Permit."
In order to purchase your permit, you will need to provide your vehicle license plate number, along with the make, model, and color of your vehicle.
To find the cost of a parking permit, check the Parking web page.
(www.laspositascollege.edu/parking/costs.php)
- If you park backwards (with the front of your car facing out) in a parking spot, you will get a parking ticket.

APPENDIX



Student Health & Wellness Center Counseling Services Referrals

Support Service Of Alameda County Suicide Prevention
24 Hr. Crisis Hotline: 1-800-309-2131

Pleasanton Community Counseling Center
Sliding Scale-Low Cost: (925) 600- 9762

Anthropos Counseling Center: (925) 449-7325
Counseling@Anthroposcounseling.Org

Horizons Family Counseling In Livermore: (925) 371-4747
www.Ci.Livermore.Ca.Us/Horizons/Horizons.Html

Axis Community Health In Pleasanton
Sliding Scale- Medical: (925) 201-6250
www.Axishealth.Org (Can Prescribe Medication)

The Hume Center In Pleasanton: (925) 223-8047
Fremont/ Hayward: (510) 745-9151
www.Humecenter.Org Sliding Scale- Medical

Hotline/Crisis Numbers

• Alameda County Access Program	1-800-491-9099
• La Familia Counseling Services	(510) 881-5921
• La Clínica de la Raza (Oakland)	(510) 535-6200
• Asian Community Mental Health Services	(510) 869-7200
• Crisis Support Services Of Alameda	1-800-309-2131
• Berkeley Mental Health	(510) 981-5254
• Willow Rock Center (Adolescent Crisis Respond Service)	(510) 483-3030
• Willow Rock Center (Adolescent Psychiatric Service)	(510) 895-5502
• John George Psychiatric Pavilion	(510) 346-7500
• Sausal Creek Outpatient Stabilization Program	(510) 437-2363
• Alcoholics Anonymous	(925) 829-0666
• Cherry Hill Detoxification Services	1-866-866-7496
• Family Education and Resources Center	(510) 746-1700
• Social Services@ Highland Hospital	(510) 522-3700
• Battered Women/Tri Valley Haven Crisis Line	(925) 449-5845
• Child Protective Services Of Alameda County	(510) 259-1800
• Crime Victims	1-800-VICTIMS
• Emergency Shelter Program/Domestic Violence	1-800-SAFE
• Alameda County Medical & Social Services (Hayward)	(510) 259-2277
• Sexual Assault Hotline	1-800-656-4673
• Police, Sheriff, Fire Department	911

My Weekly Schedule

	Sunday	Monday	Tuesday	Wednesday	Thursday	Friday	Saturday
6–7:00AM							
7–8:00AM							
8–9:00AM							
9–10:00AM							
10–11:00AM							
11–12:00AM							
12–1:00PM							
1–2:00PM							
2–3:00PM							
3–4:00PM							
4–5:00PM							
5–6:00PM							
6–7:00PM							
7–8:00PM							
8–9:00PM							
9–10:00PM							
10–11:00PM							
11–12:00PM							
12–1:00AM							

LAS POSITAS COLLEGE CAMPUS MAP

3000 Campus Hill Drive, Livermore, CA 94551 | www.laspositascollege.edu

